

For Research Use Only

# GPI Polyclonal antibody

Catalog Number: 15171-1-AP

Featured Product

20 Publications



## Basic Information

|  |  |  |
|--|--|--|
| <b>Catalog Number:</b><br>15171-1-AP   | <b>GenBank Accession Number:</b><br>BC004982     | <b>Purification Method:</b><br>Antigen affinity purification                         |
| <b>Size:</b><br>150ul , Concentration: 600 µg/ml by Nanodrop and 220 µg/ml by Bradford method using BSA as the standard; | <b>GeneID (NCBI):</b><br>2821                    | <b>Recommended Dilutions:</b><br>WB 1:500-1:2000<br>IHC 1:100-1:400<br>IF 1:50-1:500 |
| <b>Source:</b><br>Rabbit   | <b>Full Name:</b><br>glucose phosphate isomerase |  |
| <b>Isotype:</b><br>IgG   | <b>Calculated MW:</b><br>63 kDa                  |  |
| <b>Immunogen Catalog Number:</b><br>AG7423   | <b>Observed MW:</b><br>55-64 kDa                 |  |

## Applications

|   |  |
|---|--|
| <b>Tested Applications:</b><br>IF, IHC, WB, ELISA | <b>Positive Controls:</b><br>WB : HeLa cells, PC-3 cells, U251 cells, U87-MG cells |
| <b>Cited Applications:</b><br>IF, IHC, WB         | <b>IHC :</b> human lung cancer tissue,   |
| <b>Species Specificity:</b><br>human, mouse, rat  | <b>IF :</b> PC-3 cells,  |
| <b>Cited Species:</b><br>human, rat, mouse, pig   |  |

**Note-IHC: suggested antigen retrieval with TE buffer pH 9.0; (\*) Alternatively, antigen retrieval may be performed with citrate buffer pH 6.0**

## Background Information

GPI (Glucose-6-phosphate isomerase), which is also named as autocrine motility factor (AMF), phosphoglucose isomerase (PGI), Neuroleukinin (NLK), phosphohexose isomerase (PHI) or sperm antigen 36 (SA-36), is a housekeeping cytosolic enzyme that plays a key role in both glycolysis and gluconeogenesis pathways. It is also a multifunctional protein that displays cytokine properties, eliciting mitogenic, motogenic, and differentiation activities, and has been implicated in tumor progression and metastasis (PMID:12783864, 19603112). This protein can exist as a homodimer in the catalytically active form and a monomer in the secreted form (PMID:11371164). It has 2 isoforms produced by alternative splicing with the calculated molecular mass of 63-64 kDa, and an apparent molecular mass of 55 and 64 kDa under non-reducing and reducing conditions, respectively (PMID: 19603112, 11004567).

## Notable Publications

| Author        | Pubmed ID | Journal             | Application |
|---------------|-----------|---------------------|-------------|
| Xixi Guo      | 31480692  | Biomolecules        | WB          |
| Rongkun Li    | 34836938  | Cell Death Dis      | WB          |
| Zhiyong Zhang | 36384075  | Int Immunopharmacol | WB          |

## Storage

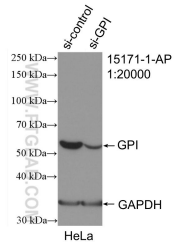
**Storage:**  
Store at -20°C. Stable for one year after shipment.  
**Storage Buffer:**  
PBS with 0.02% sodium azide and 50% glycerol pH 7.3.  
Aliquoting is unnecessary for -20°C storage

\*\*\* 20ul sizes contain 0.1% BSA

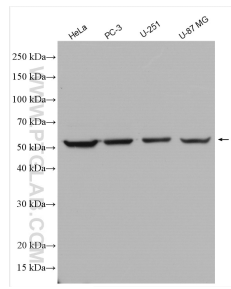
For technical support and original validation data for this product please contact:  
T: 1 (888) 4PTGLAB (1-888-478-4522) (toll free in USA), or 1(312) 455-8498 (outside USA)  
E: proteintech@ptglab.com  
W: ptglab.com

This product is exclusively available under Proteintech Group brand and is not available to purchase from any other manufacturer.

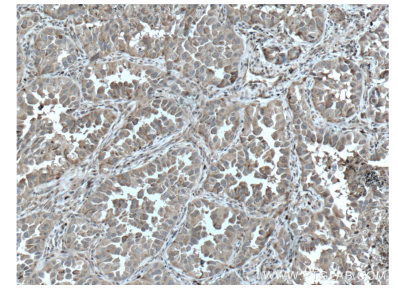
## Selected Validation Data



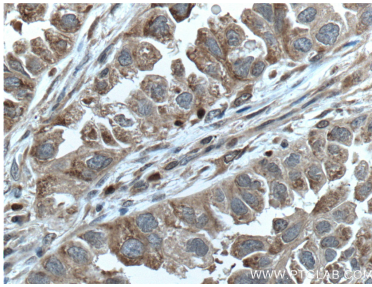
WB result of GPI antibody (15171-1-AP; 1:20000; incubated at room temperature for 1.5 hours) with sh-Control and sh-GPI transfected HeLa cells.



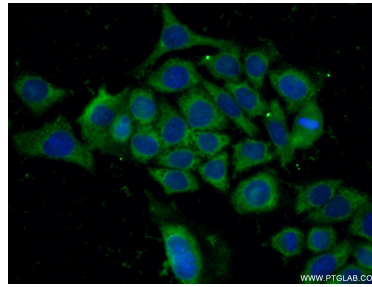
Various lysates were subjected to SDS PAGE followed by western blot with 15171-1-AP (GPI antibody) at dilution of 1:1000 incubated at room temperature for 1.5 hours.



Immunohistochemical analysis of paraffin-embedded human lung cancer tissue slide using 15171-1-AP (GPI Antibody) at dilution of 1:200 (under 10x lens). Heat mediated antigen retrieval with Tris-EDTA buffer (pH 9.0).



Immunohistochemical analysis of paraffin-embedded human lung cancer tissue slide using 15171-1-AP (GPI Antibody) at dilution of 1:200 (under 40x lens). Heat mediated antigen retrieval with Tris-EDTA buffer (pH 9.0).



Immunofluorescent analysis of (-20°C Ethanol) fixed PC-3 cells using 15171-1-AP (GPI antibody) at dilution of 1:50 and Alexa Fluor 488-conjugated AffiniPure Goat Anti-Rabbit IgG(H+L).