

For Research Use Only

# RRS1 Polyclonal antibody

Catalog Number: 15329-1-AP

Featured Product

3 Publications



## Basic Information

**Catalog Number:**  
15329-1-AP

**Size:**  
150ul, Concentration: 450 µg/ml by Nanodrop and 320 µg/ml by Bradford method using BSA as the standard;

**Source:**  
Rabbit

**Isotype:**  
IgG

**Immunogen Catalog Number:**  
AG7030

**GenBank Accession Number:**  
BC001811

**GeneID (NCBI):**  
23212

**Full Name:**  
RRS1 ribosome biogenesis regulator homolog (*S. cerevisiae*)

**Calculated MW:**  
41 kDa

**Observed MW:**  
41 kDa

**Purification Method:**  
Antigen affinity purification

**Recommended Dilutions:**  
WB 1:500-1:1000  
IP 0.5-4.0 ug for IP and 1:500-1:1000 for WB

## Applications

**Tested Applications:**  
IP, WB, ELISA

**Cited Applications:**  
WB

**Species Specificity:**  
human, mouse, rat

**Cited Species:**  
human

**Positive Controls:**

**WB:** K-562 cells, HeLa cells

**IP:** K-562 cells,

## Background Information

### Notable Publications

Author	Pubmed ID	Journal	Application
Kai Yuan	35614066	Nat Commun	WB
Pengbo Cao	34433556	Sci Adv	WB
Akihiro Yamashita	37736739	Biol Direct	WB

## Storage

**Storage:**

Store at -20°C. Stable for one year after shipment.

**Storage Buffer:**

PBS with 0.02% sodium azide and 50% glycerol pH 7.3.

Aliquoting is unnecessary for -20°C storage

\*\*\* 20ul sizes contain 0.1% BSA

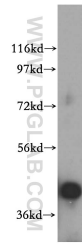
For technical support and original validation data for this product please contact:

T: 1 (888) 4PTGLAB (1-888-478-4522) (toll free in USA), or 1(312) 455-8498 (outside USA)

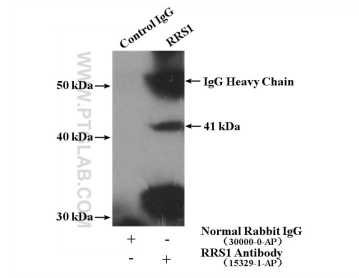
E: [proteintech@ptglab.com](mailto:proteintech@ptglab.com)  
W: [ptglab.com](http://ptglab.com)

This product is exclusively available under Proteintech Group brand and is not available to purchase from any other manufacturer.

## Selected Validation Data



K-562 cells were subjected to SDS PAGE followed by western blot with 15329-1-AP (RRS1 antibody) at dilution of 1:500 incubated at room temperature for 1.5 hours.



IP Result of anti-RRS1 (IP:15329-1-AP, 4ug; Detection:15329-1-AP 1:800) with K-562 cells lysate 3200ug.