

For Research Use Only

# SEC13 Polyclonal antibody

Catalog Number: 15397-1-AP **16 Publications**



## Basic Information

<b>Catalog Number:</b> 15397-1-AP	<b>GenBank Accession Number:</b> BC002634	<b>Purification Method:</b> Antigen affinity purification
<b>Size:</b> 150ul, Concentration: 300 µg/ml by Nanodrop and 220 µg/ml by Bradford method using BSA as the standard;	<b>GeneID (NCBI):</b> 6396	<b>Recommended Dilutions:</b> WB 1:2000-1:12000 IP 0.5-4.0 ug for 1.0-3.0 mg of total protein lysate IHC 1:200-1:800 IF 1:10-1:100
<b>Source:</b> Rabbit	<b>UNIPROT ID:</b> P55735	
<b>Isotype:</b> IgG	<b>Full Name:</b> SEC13 homolog (S. cerevisiae)	
<b>Immunogen Catalog Number:</b> AG7610	<b>Calculated MW:</b> 36 kDa	
	<b>Observed MW:</b> 36 kDa	

## Applications

<b>Tested Applications:</b> IF, IHC, IP, WB, ELISA	<b>Positive Controls:</b> WB : HepG2 cells, RAW 264.7 cells IP : HepG2 cells, IHC : mouse brain tissue, mouse liver tissue, human kidney tissue, human placenta tissue, human testis tissue, human skin tissue, human spleen tissue, human lung tissue, human ovary tissue IF : HepG2 cells,
<b>Cited Applications:</b> IF, WB	
<b>Species Specificity:</b> human, mouse, rat	
<b>Cited Species:</b> human, rat, mouse	

**Note-IHC: suggested antigen retrieval with TE buffer pH 9.0; (\*) Alternatively, antigen retrieval may be performed with citrate buffer pH 6.0**

## Background Information

SEC13 is a component of the nuclear pore complex (NPC) and the COPII coat. It is required for vesicle biogenesis from endoplasmic reticulum during the transport of proteins. Shuttling of SEC13 between the nucleus and the cytoplasm may couple and regulate functions between these two compartments. (PMID: 14517296; 16407955)

## Notable Publications

Author	Pubmed ID	Journal	Application
Jacqueline Morales	36282590	JCI Insight	WB
Mengyue You	36252341	Redox Biol	WB
C Teodorof	24825317	Neurobiol Dis	

## Storage

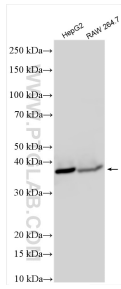
**Storage:**  
Store at -20°C. Stable for one year after shipment.  
**Storage Buffer:**  
PBS with 0.02% sodium azide and 50% glycerol pH 7.3.  
Aliquoting is unnecessary for -20°C storage

\*\*\* 20ul sizes contain 0.1% BSA

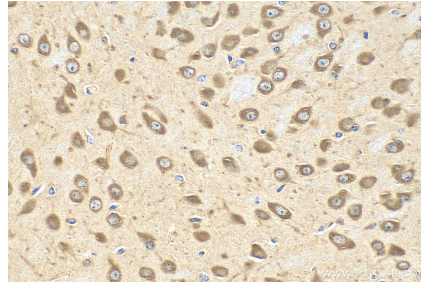
For technical support and original validation data for this product please contact:  
T: 1 (888) 4PTGLAB (1-888-478-4522) (toll free in USA), or 1(312) 455-8498 (outside USA) E: proteintech@ptglab.com W: ptglab.com

This product is exclusively available under Proteintech Group brand and is not available to purchase from any other manufacturer.

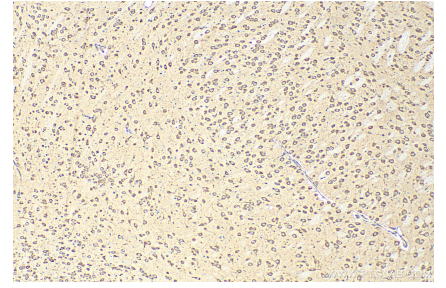
## Selected Validation Data



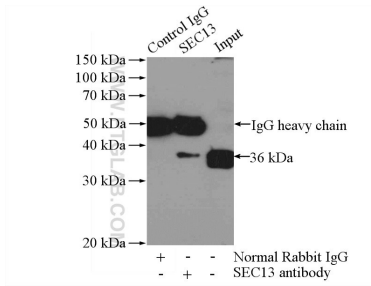
Various lysates were subjected to SDS PAGE followed by western blot with 15397-1-AP (SEC13 antibody) at dilution of 1:6000 incubated at room temperature for 1.5 hours.



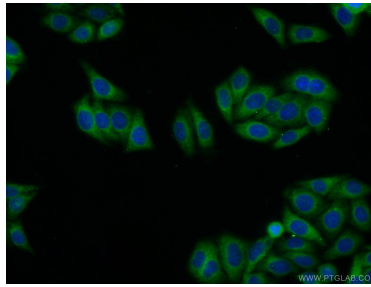
Immunohistochemical analysis of paraffin-embedded mouse brain tissue slide using 15397-1-AP (SEC13 antibody) at dilution of 1:400 (under 40x lens). Heat mediated antigen retrieval with Tris-EDTA buffer (pH 9.0).



Immunohistochemical analysis of paraffin-embedded mouse brain tissue slide using 15397-1-AP (SEC13 antibody) at dilution of 1:400 (under 10x lens). Heat mediated antigen retrieval with Tris-EDTA buffer (pH 9.0).



IP result of anti-SEC13 (IP:15397-1-AP, 3ug; Detection:15397-1-AP 1:1000) with HepG2 cells lysate 3200ug.



Immunofluorescent analysis of HepG2 cells using 15397-1-AP (SEC13 antibody) at dilution of 1:25 and Alexa Fluor 488-conjugated AffiniPure Goat Anti-Rabbit IgG(H+L).