

For Research Use Only

# Fibronectin Polyclonal antibody

Catalog Number: 15613-1-AP

Featured Product

544 Publications



## Basic Information

**Catalog Number:**

15613-1-AP

**Size:**

150ul , Concentration: 500 µg/ml by Nanodrop;

**Source:**

Rabbit

**Isotype:**

IgG

**Immunogen Catalog Number:**

AG8004

**GenBank Accession Number:**

BC005858

**GeneID (NCBI):**

2335

**UNIPROT ID:**

P02751

**Full Name:**

fibronectin 1

**Calculated MW:**

2386 aa, 263 kDa

**Observed MW:**

250-275 kDa

**Purification Method:**

Antigen affinity purification

**Recommended Dilutions:**

WB 1:2000-1:20000

IP 0.5-4.0 ug for 1.0-3.0 mg of total protein lysate

IF 1:50-1:500

## Applications

**Tested Applications:**

WB, IP, IF, FC, ELISA

**Cited Applications:**

WB, IF, FC, ELISA

**Species Specificity:**

human, mouse, rat

**Cited Species:**

human, medaka embryos, rat, mouse, hamster, pig

**Positive Controls:**

WB : human plasma, NIH/3T3 cells, MDA-MB-453s cells

IP : NIH/3T3 cells,

IF : NIH/3T3 cells,

## Background Information

Fibronectin 1 (FN1) is a high molecular weight glycoprotein which exists in both a soluble form in plasma (plasma FN1) and other body fluids and an insoluble form in the extracellular matrix (cellular FN1). Plasma FN1 (dimeric form) is secreted by hepatocytes. Cellular FN (dimeric or cross-linked multimeric forms), made by fibroblasts, epithelial and other cell types, is deposited as fibrils in the extracellular matrix. FN1 binds to cell surfaces through integrins and to various compounds including collagen, fibrin and heparin. It is involved in cell adhesion and migration processes including embryogenesis, wound healing, hemostasis, host defense, and metastasis. (PMID: 7276612; 12244123; 12847088)

## Notable Publications

Author	Pubmed ID	Journal	Application
Dong Zeng	32979359	Life Sci	WB
Bing Sun	27684953	PLoS One	WB
Chen Chen	36212944	Evid Based Complement Alternat Med	IF

## Storage

**Storage:**

Store at -20°C. Stable for one year after shipment.

**Storage Buffer:**

PBS with 0.02% sodium azide and 50% glycerol pH 7.3.

Aliquoting is unnecessary for -20°C storage

\*\*\* 20ul sizes contain 0.1% BSA

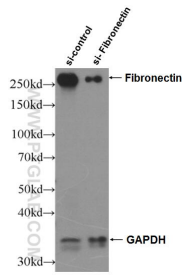
For technical support and original validation data for this product please contact:

T: 1 (888) 4PTGLAB (1-888-478-4522) (toll free in USA), or 1(312) 455-8498 (outside USA)

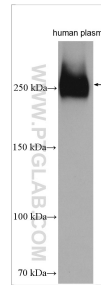
E: proteintech@ptglab.com  
W: ptglab.com

This product is exclusively available under Proteintech Group brand and is not available to purchase from any other manufacturer.

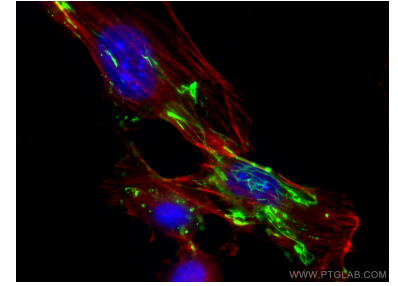
## Selected Validation Data



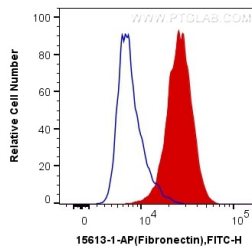
WB result of Fibronectin antibody (15613-1-AP; 1:2000; incubated at room temperature for 1.5 hours) with sh-Control and sh-Fibronectin transfected NIH/3T3 cells.



human plasma were subjected to SDS PAGE followed by western blot with 15613-1-AP (Fibronectin antibody) at dilution of 1:20000 incubated at room temperature for 1.5 hours.



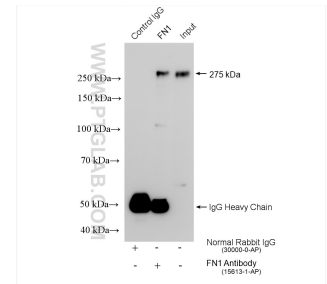
Immunofluorescent analysis of (-20°C Ethanol) fixed NIH/3T3 cells using Fibronectin antibody (15613-1-AP) at dilution of 1:200 and CoraLite®488-Conjugated AffiniPure Goat Anti-Rabbit IgG(H+L), CL594-Phalloidin (red).



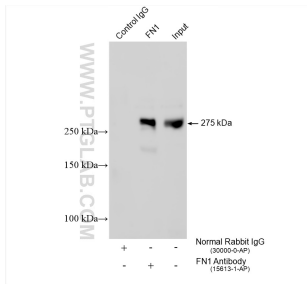
1X10<sup>6</sup> NIH/3T3 cells were intracellularly stained with 0.4 ug Anti-Human Fibronectin (15613-1-AP) and CoraLite®488-Conjugated AffiniPure Goat Anti-Rabbit IgG(H+L) at dilution 1:1000 (red), or 0.4 ug Control Antibody. Cells were fixed with 4% PFA and permeabilized with Flow Cytometry Perm Buffer (PF00011-C).



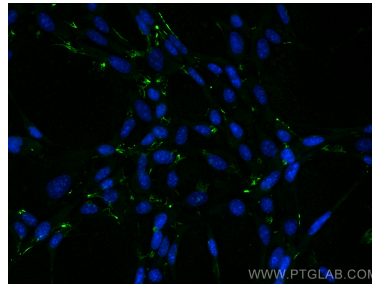
Various lysates were subjected to SDS PAGE followed by western blot with 15613-1-AP (Fibronectin antibody) at dilution of 1:50000 incubated at room temperature for 1.5 hours.



IP result of anti-Fibronectin (IP:15613-1-AP, 4ug; Detection:15613-1-AP 1:1000) with NIH/3T3 cells lysate 1120 ug.



IP result of anti-Fibronectin (IP:15613-1-AP, 4ug; Detection:15613-1-AP 1:3000) with NIH/3T3 cells lysate 1505 ug.



Immunofluorescent analysis of (-20°C Ethanol) fixed NIH/3T3 cells using Fibronectin antibody (15613-1-AP) at dilution of 1:400 and CoraLite®488-Conjugated AffiniPure Goat Anti-Rabbit IgG(H+L).