

For Research Use Only

CD44 Polyclonal antibody

Catalog Number: 15675-1-AP

Featured Product

290 Publications



Basic Information

Catalog Number:

15675-1-AP

Size:

150ul, Concentration: 700 µg/ml by Nanodrop;

Source:

Rabbit

Isotype:

IgG

Immunogen Catalog Number:

AG8143

GenBank Accession Number:

BC004372

GeneID (NCBI):

960

ENSEMBL Gene ID:

ENSG00000026508

UNIPROT ID:

P16070

Full Name:

CD44 molecule (Indian blood group)

Calculated MW:

742 aa, 82 kDa

Observed MW:

80-95 kDa

Purification Method:

Antigen affinity purification

Recommended Dilutions:

WB 1:2000-1:16000

IP 0.5-4.0 µg for 1.0-3.0 mg of total protein lysate

IHC 1:500-1:2000

IF 1:50-1:500

Applications

Tested Applications:

WB, IP, IF, FC, IHC, ELISA

Cited Applications:

WB, IP, IF, FC, IHC, CoIP, Neutralization

Species Specificity:

human

Cited Species:

human, sika deer, Bovine

Note-IHC: suggested antigen retrieval with TE buffer pH 9.0; (*) Alternatively, antigen retrieval may be performed with citrate buffer pH 6.0

Positive Controls:

WB: MDA-MB-231 cells, HeLa cells, HUVEC cells, A549 cells

IP: HeLa cells,

IHC: human lung cancer tissue, human colon cancer tissue, human oesophagus cancer tissue

IF: HeLa cells, human colon cancer tissue, A375 cells, HUVEC cells, UCMSCs cells

Background Information

CD44 is a type I transmembrane glycoprotein that mediates cell-cell and cell-matrix interactions through its affinity for hyaluronic acid (HA) and possibly also through its affinity for other ligands. Adhesion with HA plays an important role in cell migration, tumor growth and progression. CD44 is also involved in lymphocyte activation, recirculation and homing, and in hematopoiesis. This protein exists in multiple forms (with molecular weight ranging from 16 kDa to over 200 kDa) generated by alternative RNA splicing and extensive post-translational modifications.

Notable Publications

Author	Pubmed ID	Journal	Application
Lei Liu	27729869	Front Physiol	WB
Yuting He	30288117	Cancer Manag Res	IHC,IF,WB
Rong Ding	34553339	J Physiol Biochem	WB, IHC

Storage

Storage:

Store at -20°C. Stable for one year after shipment.

Storage Buffer:

PBS with 0.02% sodium azide and 50% glycerol pH 7.3.

Aliquoting is unnecessary for -20°C storage

*** 20ul sizes contain 0.1% BSA

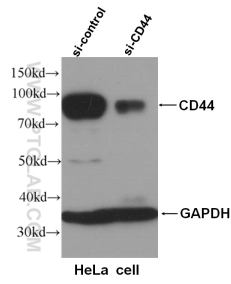
For technical support and original validation data for this product please contact:

T: 1 (888) 4PTGLAB (1-888-478-4522) (toll free in USA), or 1(312) 455-8498 (outside USA)

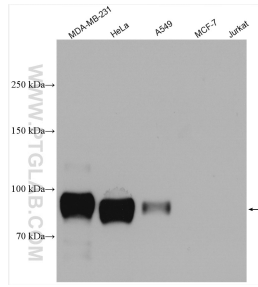
E: proteintech@ptglab.com
W: ptglab.com

This product is exclusively available under Proteintech Group brand and is not available to purchase from any other manufacturer.

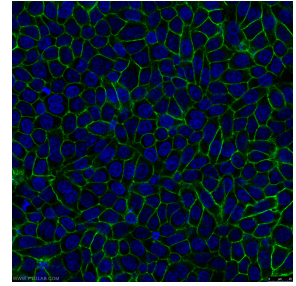
Selected Validation Data



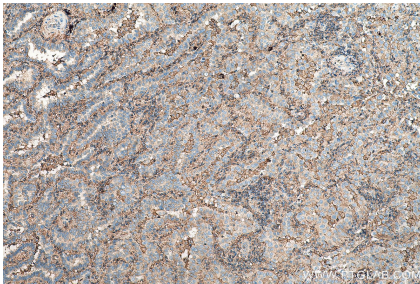
WB result of CD44 antibody (15675-1-AP, 1:6000) with si-Control and si-CD44 transfected HeLa cells.



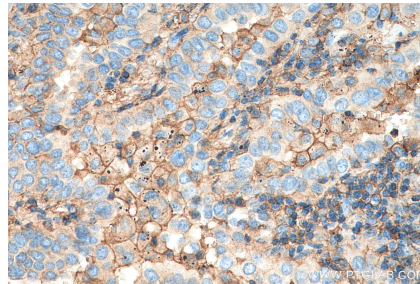
MDA-MB-231 (CD44+), HeLa (CD44+), A549 (CD44+), MCF-7, Jurkat cell lysates were subjected to SDS PAGE followed by western blot with 15675-1-AP (CD44 antibody) at dilution of 1:8000 incubated at room temperature for 1.5 hours.



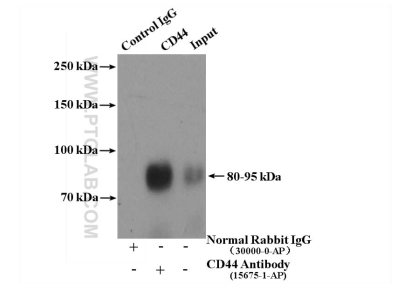
Immunofluorescent analysis of (-20°C Ethanol) fixed HeLa cells using 15675-1-AP (CD44 antibody) at dilution of 1:200 and Alexa Fluor 488-Conjugated AffiniPure Goat Anti-Rabbit IgG(H+L).



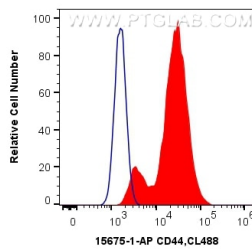
Immunohistochemical analysis of paraffin-embedded human lung cancer tissue slide using 15675-1-AP (CD44 antibody) at dilution of 1:1000 (under 10x lens). Heat mediated antigen retrieval with Tris-EDTA buffer (pH 9.0).



Immunohistochemical analysis of paraffin-embedded human lung cancer tissue slide using 15675-1-AP (CD44 antibody) at dilution of 1:1000 (under 40x lens). Heat mediated antigen retrieval with Tris-EDTA buffer (pH 9.0).



IP result of anti-CD44 (IP:15675-1-AP, 4ug; Detection:15675-1-AP 1:2000) with HeLa cells lysate 2400ug.



1×10^6 HeLa cells were surface stained with 0.4 ug Anti-Human CD44 (15675-1-AP) and CoraLite® 488-Conjugated AffiniPure Goat Anti-Rabbit IgG(H+L) at dilution 1:1000 (red), or 0.4 ug Control Antibody. Cells were not fixed.