

For Research Use Only

MAP1S Polyclonal antibody

Catalog Number: 15695-1-AP

Featured Product

5 Publications



Basic Information

Catalog Number: 15695-1-AP	GenBank Accession Number: BC008806	Purification Method: Antigen affinity purification
Size: 150ul, Concentration: 400 µg/ml by Nanodrop;	GeneID (NCBI): 55201	Recommended Dilutions: WB 1:1000-1:8000 IP 0.5-4.0 ug for IP and 1:500-1:1000 for WB
Source: Rabbit	Full Name: microtubule-associated protein 1S	IHC 1:200-1:800
Isotype: IgG	Calculated MW: 806 aa, 85 kDa	IF 1:200-1:800
Immunogen Catalog Number: AG8315	Observed MW: 130-150 kDa	

Applications

Tested Applications:
IF, IHC, IP, WB, ELISA

Cited Applications:
IF, IP, WB

Species Specificity:
human

Cited Species:
human, mouse

Positive Controls:

WB: HeLa cells, HEK-293 cells

IP: SH-SY5Y cells,

IHC: human prostate cancer tissue, human pancreas cancer tissue

IF: U2OS cells, HeLa cells

Note-IHC: suggested antigen retrieval with TE buffer pH 9.0; (*) Alternatively, antigen retrieval may be performed with citrate buffer pH 6.0

Background Information

MAP1S (also known as C19ORF5 or VCY2IP1) is a novel member of the microtubule-associated protein 1 family and a homologue of the exclusively neuronal distributed microtubule-associated protein 1A and 1B (MAP1A/B). In contrast to MAP1A and MAP1B, MAP1S is expressed in a wide range of tissues in addition to neurons. MAP1S is synthesized as a precursor protein that is partially cleaved into heavy and light chains in a tissue-specific manner. In addition, a short chain isoform may be induced under prolonged mitotic arrest or inhibition of the 26S proteasome. Recently it has been reported that the short chain isoform associates with mitochondria in addition to microtubules and causes irreversible aggregation of dysfunctional mitochondria resulting in cell death. Western blot analysis in human brain using this antibody detected two main bands between 100-130 kDa corresponding to heavy and light chains of MAP1S.

Notable Publications

Author	Pubmed ID	Journal	Application
Lei Wang	34782749	Cell Res	WB
Junyu Wu	27715397	Cell Cycle	WB
Kohei Arasaki	29925525	EMBO Rep	WB

Storage

Storage:

Store at -20°C. Stable for one year after shipment.

Storage Buffer:

PBS with 0.02% sodium azide and 50% glycerol pH 7.3.

Aliquoting is unnecessary for -20°C storage

*** 20ul sizes contain 0.1% BSA

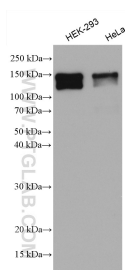
For technical support and original validation data for this product please contact:

T: 1 (888) 4PTGLAB (1-888-478-4522) (toll free in USA), or 1(312) 455-8498 (outside USA)

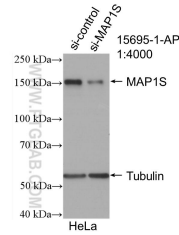
E: proteintech@ptglab.com
W: ptglab.com

This product is exclusively available under Proteintech Group brand and is not available to purchase from any other manufacturer.

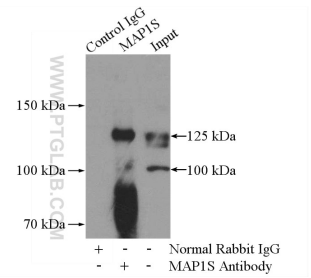
Selected Validation Data



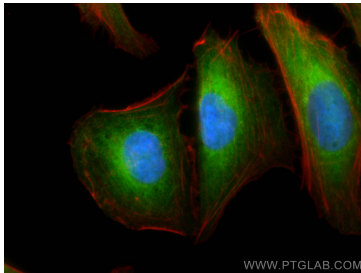
Various lysates were subjected to SDS PAGE followed by western blot with 15695-1-AP (MAP1S antibody) at dilution of 1:3000 incubated at room temperature for 1.5 hours.



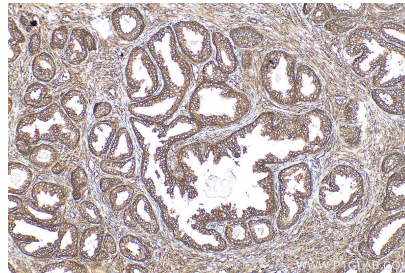
WB result of MAP1S antibody (15695-1-AP; 1:4000; incubated at room temperature for 1.5 hours) with sh-Control and sh-MAP1S transfected HeLa cells.



IP Result of anti-MAP1S (IP:15695-1-AP, 4 μ g; Detection:15695-1-AP 1:500) with SH-SY5Y cells lysate 1800 μ g.



Immunofluorescent analysis of (4% PFA) fixed U2OS cells using MAP1S antibody (15695-1-AP) at dilution of 1:400 and CoralLite@488-Conjugated AffiniPure Goat Anti-Rabbit IgG(H+L), CL594-Phalloidin (red).



Immunohistochemical analysis of paraffin-embedded human prostate cancer tissue slide using 15695-1-AP (MAP1S antibody) at dilution of 1:400 (under 10x lens). Heat mediated antigen retrieval with Tris-EDTA buffer (pH 9.0).