

For Research Use Only

KIF20A Polyclonal antibody

Catalog Number: 15911-1-AP

Featured Product

10 Publications



Basic Information

Catalog Number:

15911-1-AP

Size:

150ul, Concentration: 350 µg/ml by Nanodrop and 193 µg/ml by Bradford method using BSA as the standard;

Source:

Rabbit

Isotype:

IgG

Immunogen Catalog Number:

AG8700

GenBank Accession Number:

BC012999

GeneID (NCBI):

10112

UNIPROT ID:

O95235

Full Name:

kinesin family member 20A

Calculated MW:

890 aa, 100 kDa

Observed MW:

100 kDa

Purification Method:

Antigen affinity purification

Recommended Dilutions:

WB 1:500-1:2000

IP 0.5-4.0 µg for 1.0-3.0 mg of total protein lysate

IHC 1:50-1:500

Applications

Tested Applications:

WB, IP, IHC, ELISA

Cited Applications:

WB, IF, IHC, CoIP

Species Specificity:

human

Cited Species:

human, rat

Note-IHC: suggested antigen retrieval with TE buffer pH 9.0; (*) Alternatively, antigen retrieval may be performed with citrate buffer pH 6.0

Positive Controls:

WB : Caco-2 cells, HeLa cells

IP : HEK-293 cells,

IHC : human breast cancer tissue, human liver cancer tissue

Background Information

KIF20A, also known as RAB6KIFL or MKlp2, is a kinesin originally identified as a binding partner for the rab6 GTPase involved in protein transport at the Golgi apparatus. KIF20A belongs to a large family of motor proteins that accumulate in mitotic cells and is required for normal cell division. KIF20A is thought to be involved in carcinogenesis. In normal tissues KIF20A is almost undetectable while it is overexpressed in various cancers. KIF20A has been identified as a novel promising candidate for anticancer immunotherapy.

Notable Publications

Author	Pubmed ID	Journal	Application
Tianyu Wu	36395215	Science	IF
Suwei Zhang	31714645	J Biochem Mol Toxicol	
Stéphanie Miserey-Lenkei	29093437	Nat Commun	WB,IF

Storage

Storage:

Store at -20°C. Stable for one year after shipment.

Storage Buffer:

PBS with 0.02% sodium azide and 50% glycerol pH 7.3.

Aliquoting is unnecessary for -20°C storage

*** 20ul sizes contain 0.1% BSA

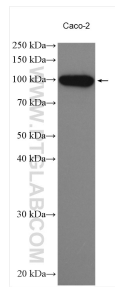
For technical support and original validation data for this product please contact:

T: 1 (888) 4PTGLAB (1-888-478-4522) (toll free in USA), or 1(312) 455-8498 (outside USA)

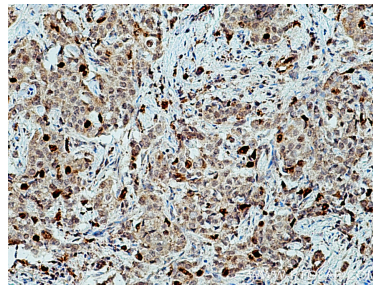
E: proteintech@ptglab.com
W: ptglab.com

This product is exclusively available under Proteintech Group brand and is not available to purchase from any other manufacturer.

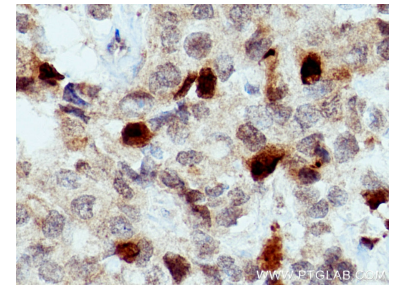
Selected Validation Data



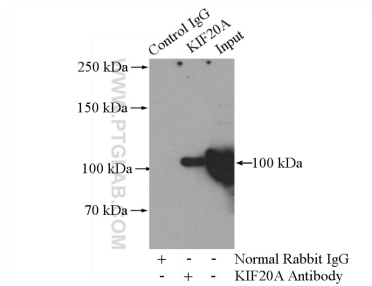
Caco-2 cells were subjected to SDS PAGE followed by western blot with 15911-1-AP (KIF20A antibody) at dilution of 1:1000 incubated at room temperature for 1.5 hours.



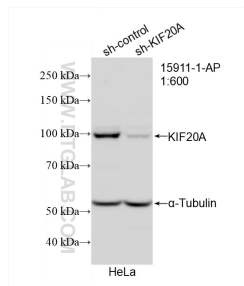
Immunohistochemical analysis of paraffin-embedded human breast cancer tissue slide using 15911-1-AP (KIF20A antibody) at dilution of 1:200 (under 10x Lens). Heat mediated antigen retrieval with Tris-EDTA buffer (pH 9.0).



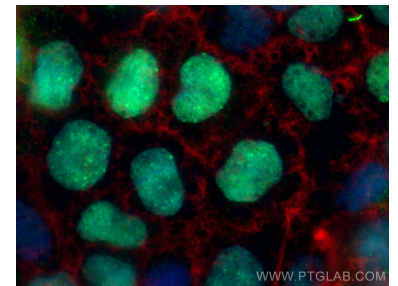
Immunohistochemical analysis of paraffin-embedded human breast cancer tissue slide using 15911-1-AP (KIF20A antibody) at dilution of 1:200 (under 40x lens). Heat mediated antigen retrieval with Tris-EDTA buffer (pH 9.0).



IP result of anti-KIF20A (IP:15911-1-AP, 4 μ g; Detection:15911-1-AP 1:500) with HEK-293 cells lysate 1200 μ g.



WB result of KIF20A antibody (15911-1-AP; 1:600; incubated at room temperature for 1.5 hours) with sh-Control and sh-KIF20A transfected HeLa cells.



Immunofluorescent analysis of (4% PFA) fixed Caco-2 cells using KIF20A antibody (15911-1-AP) at dilution of 1:400 and CoraLite@488-Conjugated AffiniPure Goat Anti-Rabbit IgG(H+L) (SA00013-2), CL594-phalloidin (red).