

For Research Use Only

# KRAS-2A-specific Polyclonal antibody



Catalog Number: 16156-1-AP **2 Publications**

## Basic Information

<b>Catalog Number:</b> 16156-1-AP	<b>GenBank Accession Number:</b> NM_033360	<b>Purification Method:</b> Antigen affinity purification
<b>Size:</b> 150ul , Concentration: 1400 µg/ml by Nanodrop and 693 µg/ml by Bradford method using BSA as the standard;	<b>GeneID (NCBI):</b> 3845	<b>Recommended Dilutions:</b> WB 1:500-1:1000 IF 1:50-1:500
<b>Source:</b> Rabbit	<b>Full Name:</b> v-Ki-ras2 Kirsten rat sarcoma viral oncogene homolog	
<b>Isotype:</b> IgG	<b>Calculated MW:</b> 21 kDa	
	<b>Observed MW:</b> 21-24 kDa	

## Applications

<b>Tested Applications:</b> FC, IF, WB, ELISA	<b>Positive Controls:</b> WB : NIH/3T3 cells, IF : SH-SY5Y cells,
<b>Cited Applications:</b> WB	
<b>Species Specificity:</b> human, mouse	
<b>Cited Species:</b> human	

## Background Information

RAS (derived from 'RAAt Sarcoma' virus) gene family includes KRAS, HRAS, and NRAS. These genes encode very similar 21 kDa proteins and are homologs of rodent sarcoma virus genes that have transforming abilities. KRAS has two isoforms, 2A and 2B. This antibody is specific for KRAS-2A, which also named as KRAS-4A .

## Notable Publications

Author	Pubmed ID	Journal	Application
Andrew M Waters	28951536	Sci Signal	WB
Sascha Röth	32668202	Cell Chem Biol	WB

## Storage

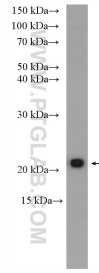
**Storage:**  
Store at -20°C. Stable for one year after shipment.  
**Storage Buffer:**  
PBS with 0.02% sodium azide and 50% glycerol pH 7.3.  
Aliquoting is unnecessary for -20°C storage

\*\*\* 20ul sizes contain 0.1% BSA

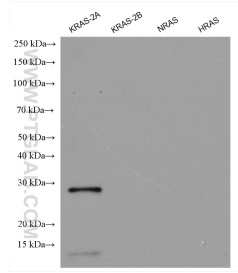
For technical support and original validation data for this product please contact:  
T: 1 (888) 4PTGLAB (1-888-478-4522) (toll free in USA), or 1(312) 455-8498 (outside USA)  
E: proteintech@ptglab.com  
W: ptglab.com

This product is exclusively available under Proteintech Group brand and is not available to purchase from any other manufacturer.

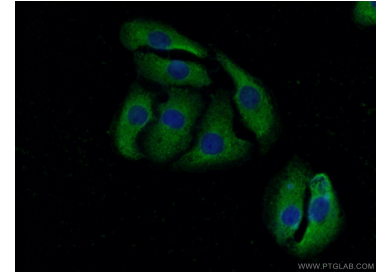
## Selected Validation Data



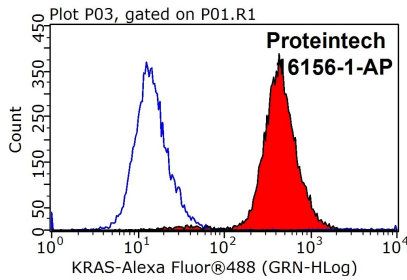
NIH/3T3 cells were subjected to SDS PAGE followed by western blot with 16156-1-AP (KRAS-2A-specific antibody) at dilution of 1:600 incubated at room temperature for 1.5 hours.



Recombinant proteins (ag27444 (6\*His tag-KRAS-2A), ag21645(6\*His tag-KRAS-2B), ag29746(6\*His tag-NRAS), ag23265(GST-HRAS)) were subjected to SDS PAGE followed by western blot with 16155-1-AP (KRAS-2B-specific antibody) at dilution of 1:2000 incubated at room temperature for 1.5 hours.



Immunofluorescent analysis of (-20°C Acetone) fixed SH-SY5Y cells using 16156-1-AP (KRAS-2A-specific antibody) at dilution of 1:50 and Alexa Fluor 488-conjugated AffiniPure Goat Anti-Rabbit IgG(H+L).



1X10<sup>6</sup> HeLa cells were stained with 0.2ug KRAS-2A-specific antibody (16156-1-AP, red) and control antibody (blue). Fixed with 90% MeOH blocked with 3% BSA (30 min). Alexa Fluor 488-conjugated AffiniPure Goat Anti-Rabbit IgG(H+L) with dilution 1:1000.