

For Research Use Only

RPL11 Polyclonal antibody

Catalog Number: 16277-1-AP

Featured Product

30 Publications



Basic Information

Catalog Number: 16277-1-AP	GenBank Accession Number: BC018970	Purification Method: Antigen affinity purification
Size: 150ul, Concentration: 450 µg/ml by Nanodrop and 207 µg/ml by Bradford method using BSA as the standard;	GeneID (NCBI): 6135	Recommended Dilutions: WB 1:500-1:2000 IHC 1:50-1:500 IF 1:10-1:100
Source: Rabbit	Full Name: ribosomal protein L11	
Isotype: IgG	Calculated MW: 177 aa, 20 kDa	
Immunogen Catalog Number: AG9356	Observed MW: 20 kDa	

Applications

Tested Applications:

IF, IHC, WB, ELISA

Cited Applications:

CoIP, IF, IP, WB

Species Specificity:

human, mouse, rat

Cited Species:

human, mouse

Note-IHC: suggested antigen retrieval with TE buffer pH 9.0; (*) Alternatively, antigen retrieval may be performed with citrate buffer pH 6.0

Positive Controls:

WB: human liver tissue, BxPC-3 cells, mouse lung tissue, mouse pancreas tissue, rat liver tissue

IHC: human liver cancer tissue,

IF: BxPC-3 cells,

Background Information

Ribosomal protein L11 is one of 80 mammalian ribosome proteins. It can bind to 5S ribosomal RNA, for it's required for rRNA maturation and formation of the 60S ribosomal subunit. It can inhibit 40S or 60S ribosome biogenesis via mediated p53 induction. Once retained by PICT1 in the nucleolus, RPL11 involve in regulation of the MDM2-P53 pathway and promotion of tumor progression.

Notable Publications

Author	Pubmed ID	Journal	Application
Ju-Ha Kim	34638383	Cancers (Basel)	WB
Xuxiu Tao	36156329	Cancer Sci	WB
Koichi Ogami	36288708	Cell Rep	WB

Storage

Storage:

Store at -20°C. Stable for one year after shipment.

Storage Buffer:

PBS with 0.02% sodium azide and 50% glycerol pH 7.3.

Aliquoting is unnecessary for -20°C storage

*** 20ul sizes contain 0.1% BSA

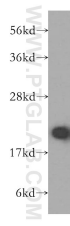
For technical support and original validation data for this product please contact:

T: 1 (888) 4PTGLAB (1-888-478-4522) (toll free in USA), or 1(312) 455-8498 (outside USA)

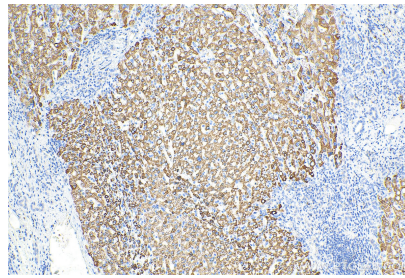
E: proteintech@ptglab.com
W: ptglab.com

This product is exclusively available under Proteintech Group brand and is not available to purchase from any other manufacturer.

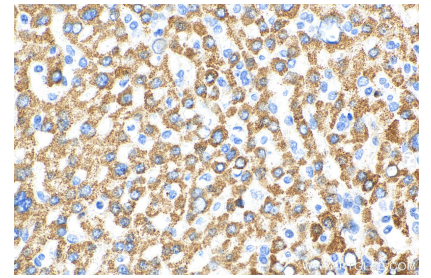
Selected Validation Data



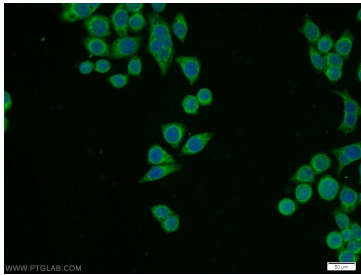
human liver tissue were subjected to SDS PAGE followed by western blot with 16277-1-AP (RPL11 antibody) at dilution of 1:500 incubated at room temperature for 1.5 hours.



Immunohistochemical analysis of paraffin-embedded human liver cancer tissue slide using 16277-1-AP (RPL11 antibody) at dilution of 1:200 (under 10x lens). Heat mediated antigen retrieval with Tris-EDTA buffer (pH 9.0).



Immunohistochemical analysis of paraffin-embedded human liver cancer tissue slide using 16277-1-AP (RPL11 antibody) at dilution of 1:200 (under 40x lens). Heat mediated antigen retrieval with Tris-EDTA buffer (pH 9.0).



Immunofluorescent analysis of BxPC-3 cells using 16277-1-AP (RPL11 antibody) at dilution of 1:25 and Alexa Fluor 488-conjugated AffiniPure Goat Anti-Rabbit IgG(H+L).