

For Research Use Only

CCDC22 Polyclonal antibody

Catalog Number: 16636-1-AP

Featured Product

17 Publications



Basic Information

Catalog Number:
16636-1-AP

Size:
150ul, Concentration: 600 µg/ml by Nanodrop and 300 µg/ml by Bradford method using BSA as the standard;

Source:
Rabbit

Isotype:
IgG

Immunogen Catalog Number:
AG9980

GenBank Accession Number:
BC000972

GeneID (NCBI):
28952

Full Name:
coiled-coil domain containing 22

Calculated MW:
71 kDa

Observed MW:
71 kDa

Purification Method:
Antigen affinity purification

Recommended Dilutions:
WB 1:500-1:2000
IP 0.5-4.0 µg for IP and 1:500-1:1000 for WB

Applications

Tested Applications:
IP, WB, ELISA

Cited Applications:
CoIP, IP, WB

Species Specificity:
human, mouse, rat

Cited Species:
human, mouse

Positive Controls:

WB: human brain tissue, mouse colon tissue, rat colon tissue, mouse lung tissue

IP: mouse lung tissue,

Background Information

Notable Publications

Author	Pubmed ID	Journal	Application
Kerrie E McNally	28892079	Nat Cell Biol	WB
Dandan Qi	26331702	Mol Biosyst	WB
Michael D Healy	36302387	Structure	WB

Storage

Storage:

Store at -20°C. Stable for one year after shipment.

Storage Buffer:

PBS with 0.02% sodium azide and 50% glycerol pH 7.3.

Aliquoting is unnecessary for -20°C storage

*** 20ul sizes contain 0.1% BSA

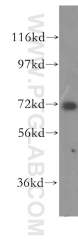
For technical support and original validation data for this product please contact:

T: 1 (888) 4PTGLAB (1-888-478-4522) (toll free in USA), or 1(312) 455-8498 (outside USA)

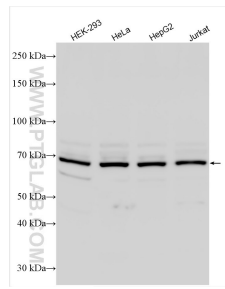
E: proteintech@ptglab.com
W: ptglab.com

This product is exclusively available under Proteintech Group brand and is not available to purchase from any other manufacturer.

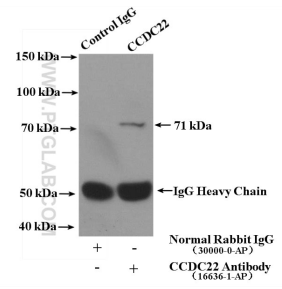
Selected Validation Data



human brain tissue were subjected to SDS PAGE followed by western blot with 16636-1-AP (CCDC22 antibody) at dilution of 1:500 incubated at room temperature for 1.5 hours.



Various lysates were subjected to SDS PAGE followed by western blot with 16636-1-AP (CCDC22 antibody) at dilution of 1:1500 incubated at room temperature for 1.5 hours.



IP Result of anti-CCDC22 (IP:16636-1-AP, 4ug; Detection:16636-1-AP 1:600) with mouse lung tissue lysate 3600ug.