

For Research Use Only

# AP1B1 Polyclonal antibody

Catalog Number: 16932-1-AP **4 Publications**



## Basic Information

<b>Catalog Number:</b> 16932-1-AP	<b>GenBank Accession Number:</b> BC046242	<b>Purification Method:</b> Antigen affinity purification
<b>Size:</b> 150ul, Concentration: 750 µg/ml by Nanodrop and 333 µg/ml by Bradford method using BSA as the standard;	<b>GeneID (NCBI):</b> 162	<b>Recommended Dilutions:</b> WB 1:500-1:2400 IP 0.5-4.0 ug for 1.0-3.0 mg of total protein lysate IF 1:50-1:500
<b>Source:</b> Rabbit	<b>Full Name:</b> adaptor-related protein complex 1, beta 1 subunit	
<b>Isotype:</b> IgG	<b>Calculated MW:</b> 919 aa, 101 kDa	
<b>Immunogen Catalog Number:</b> AG10417	<b>Observed MW:</b> 101 kDa	

## Applications

<b>Tested Applications:</b> IF, IP, WB, ELISA	<b>Positive Controls:</b> WB : HEK-293 cells, IP : HEK-293 cells, IF : HepG2 cells,
<b>Cited Applications:</b> WB	
<b>Species Specificity:</b> human	
<b>Cited Species:</b> human	

## Background Information

AP1B1 is a subunit of the adaptor complex AP-1 and is a member of the adaptin protein family. Adaptor protein (AP) complexes are cytosolic heterotetramers that mediate the sorting of membrane proteins in the secretory and endocytic pathways. AP-1 is found at the cytoplasmic face of coated vesicles located at the Golgi complex, where it mediates both the recruitment of clathrin to the membrane and the recognition of sorting signals within the cytosolic tails of transmembrane receptors.

## Notable Publications

Author	Pubmed ID	Journal	Application
Arunas Kvainickas	28935632	J Cell Biol	WB
Lynn M Boyden	31630788	Am J Hum Genet	WB
Antoine Rebendenne	35879413	Nat Genet	WB

## Storage

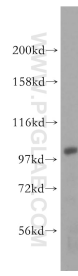
**Storage:**  
Store at -20°C. Stable for one year after shipment.  
**Storage Buffer:**  
PBS with 0.02% sodium azide and 50% glycerol pH 7.3.  
Aliquoting is unnecessary for -20°C storage

\*\*\* 20ul sizes contain 0.1% BSA

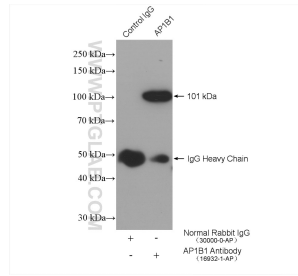
For technical support and original validation data for this product please contact:  
T: 1 (888) 4PTGLAB (1-888-478-4522) (toll free in USA), or 1(312) 455-8498 (outside USA)  
E: proteintech@ptglab.com  
W: ptglab.com

This product is exclusively available under Proteintech Group brand and is not available to purchase from any other manufacturer.

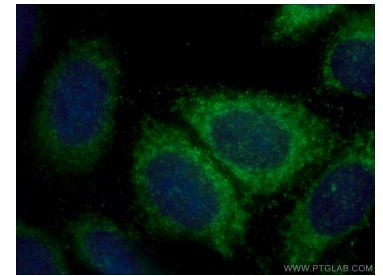
## Selected Validation Data



HEK-293 cells were subjected to SDS PAGE followed by western blot with 16932-1-AP (AP1B1 antibody) at dilution of 1:500 incubated at room temperature for 1.5 hours.



IP result of anti-AP1B1 (IP:16932-1-AP, 4 $\mu$ g; Detection:16932-1-AP 1:300) with HEK-293 cells lysate 2320  $\mu$ g.



Immunofluorescent analysis of (-20°C Ethanol) fixed HepG2 cells using 16932-1-AP (AP1B1 antibody) at dilution of 1:50 and Alexa Fluor 488-Conjugated AffiniPure Goat Anti-Rabbit IgG(H+L).