

For Research Use Only

# TLR7 Polyclonal antibody

Catalog Number: 17232-1-AP

Featured Product

12 Publications



## Basic Information

<b>Catalog Number:</b> 17232-1-AP	<b>GenBank Accession Number:</b> BC033651	<b>Purification Method:</b> Antigen affinity purification
<b>Size:</b> 150ul , Concentration: 600 µg/ml by Nanodrop;	<b>GeneID (NCBI):</b> 51284	<b>Recommended Dilutions:</b> WB 1:500-1:1000 IHC 1:50-1:500 IF 1:200-1:800
<b>Source:</b> Rabbit	<b>UNIPROT ID:</b> Q9NYK1	
<b>Isotype:</b> IgG	<b>Full Name:</b> toll-like receptor 7	
<b>Immunogen Catalog Number:</b> AG11073	<b>Calculated MW:</b> 1049 aa, 121 kDa	
	<b>Observed MW:</b> 121 kDa, 100 kDa	

## Applications

<b>Tested Applications:</b> WB, IF, IHC, ELISA	<b>Positive Controls:</b> WB : mouse lung tissue, Jurkat cells IHC : human lung tissue, human small intestine tissue IF : RAW 264.7 cells,
<b>Cited Applications:</b> WB, IF, IHC	
<b>Species Specificity:</b> human, mouse	
<b>Cited Species:</b> human, rat, mouse	

**Note-IHC: suggested antigen retrieval with TE buffer pH 9.0; (\*) Alternatively, antigen retrieval may be performed with citrate buffer pH 6.0**

## Background Information

Among the TLR family, TLR7 (toll-like receptor 7) is an endosomal innate immune sensor that can detect single-stranded ribonucleic acid. Constitutive expression of TLR7 is pre-dominant in dendritic cells and B cells compared to other immune cells. Low levels of TLR7 expression have been observed in non-immune cells, such as hepatocytes, epithelial cells, and keratinocytes (PMID: 37596656).

## Notable Publications

Author	Pubmed ID	Journal	Application
Li Zhang	32920982	Acta Physiol (Oxf)	WB
Mingyang Niu	33365075	Exp Ther Med	WB
Hsin-Yuan Chen	36421424	Antioxidants (Basel)	WB

## Storage

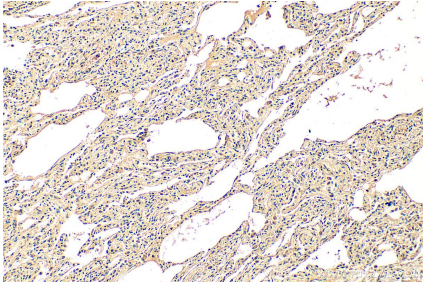
**Storage:**  
Store at -20°C. Stable for one year after shipment.  
**Storage Buffer:**  
PBS with 0.02% sodium azide and 50% glycerol pH 7.3.  
Aliquoting is unnecessary for -20°C storage

\*\*\* 20ul sizes contain 0.1% BSA

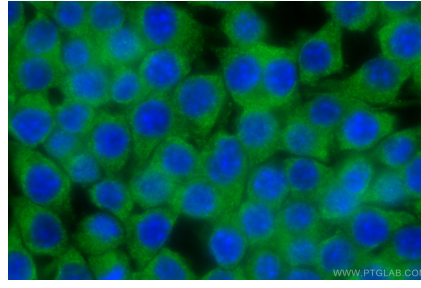
For technical support and original validation data for this product please contact:  
T: 1 (888) 4PTGLAB (1-888-478-4522) (toll free in USA), or 1(312) 455-8498 (outside USA)  
E: proteintech@ptglab.com  
W: ptglab.com

This product is exclusively available under Proteintech Group brand and is not available to purchase from any other manufacturer.

## Selected Validation Data



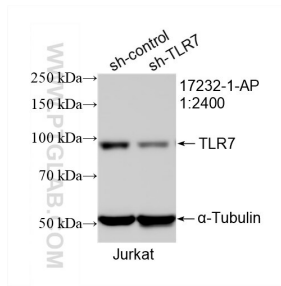
Immunohistochemical analysis of paraffin-embedded human lung tissue slide using 17232-1-AP (TLR7 antibody) at dilution of 1:200 (under 10x lens). Heat mediated antigen retrieval with Tris-EDTA buffer (pH 9.0).



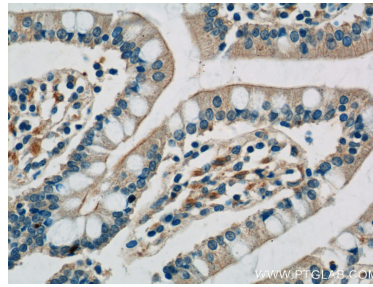
Immunofluorescent analysis of (4% PFA) fixed RAW 264.7 cells using TLR7 antibody (17232-1-AP) at dilution of 1:400 and CoraLite® 488-Conjugated AffiniPure Goat Anti-Rabbit IgG(H+L).



mouse lung tissue were subjected to SDS PAGE followed by western blot with 17232-1-AP (TLR7 antibody) at dilution of 1:400 incubated at room temperature for 1.5 hours.



WB result of TLR7 antibody (17232-1-AP; 1:2400; incubated at room temperature for 1.5 hours) with sh-Control and sh-TLR7 transfected Jurkat cells.



Immunohistochemical analysis of paraffin-embedded human small intestine tissue slide using 17232-1-AP (TLR7 Antibody) at dilution of 1:50 (under 40x lens).