

For Research Use Only

RB1CC1 Polyclonal antibody

Catalog Number: 17250-1-AP

Featured Product

93 Publications



Basic Information

Catalog Number: 17250-1-AP	GenBank Accession Number: BC017556	Purification Method: Antigen affinity purification
Size: 150ul , Concentration: 700 µg/ml by Nanodrop;	GeneID (NCBI): 9821	Recommended Dilutions: WB 1:5000-1:50000 IP 0.5-4.0 ug for 1.0-3.0 mg of total protein lysate IHC 1:20-1:200 IF 1:10-1:100
Source: Rabbit	Full Name: RB1-inducible coiled-coil 1	
Isotype: IgG	Calculated MW: 1594 aa, 183 kDa	
Immunogen Catalog Number: AG10508	Observed MW: 200 kDa	

Applications

Tested Applications:
IF, IHC, IP, WB, ELISA

Cited Applications:
CoIP, IF, IHC, IP, WB

Species Specificity:
human, mouse, rat

Cited Species:
human, rat, mouse, monkey

Positive Controls:

WB : HEK-293 cells, K-562 cells, Jurkat cells, MCF-7 cells

IP : HEK-293 cells,

IHC : human liver cancer tissue, human breast cancer tissue

IF : HepG2 cells, MCF-7 cells

Note-IHC: suggested antigen retrieval with TE buffer pH 9.0; (*) Alternatively, antigen retrieval may be performed with citrate buffer pH 6.0

Background Information

RB1CC1, also named as RBICC or FIP200, is implicated in the regulation of RB1 expression and functions as a DNA-binding transcription factor. It is a potent regulator of the RB1 pathway and a mediator that plays a crucial role in muscular differentiation. Its expression is, thus, a prerequisite for myogenic differentiation. Involved in autophagy. RB1CC1 is required for autophagosome formation. It is probably involved in the tumorigenesis of breast cancer. RB1CC1 is frequently mutated in breast cancer and shows characteristics of a classical tumor suppressor gene. This antibody is a rabbit polyclonal antibody raised against residues near the C terminus of human RB1CC1. the calculated molecular weight of RB1CC1 is 180 kDa, but the modified RB1CC1 is about 200 kDa.

Notable Publications

Author	Pubmed ID	Journal	Application
Qiaoxia Zheng	36198318	Cell	WB,IF,CoIP
Shulin Li	34561617	Cell Res	WB,IF
Luis Muniz-Feliciano	28933590	Autophagy	WB

Storage

Storage:

Store at -20°C. Stable for one year after shipment.

Storage Buffer:

PBS with 0.02% sodium azide and 50% glycerol pH 7.3.

Aliquoting is unnecessary for -20°C storage

*** 20ul sizes contain 0.1% BSA

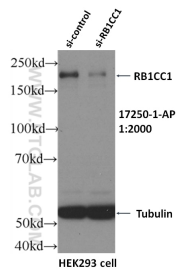
For technical support and original validation data for this product please contact:

T: 1 (888) 4PTGLAB (1-888-478-4522) (toll free in USA), or 1(312) 455-8498 (outside USA)

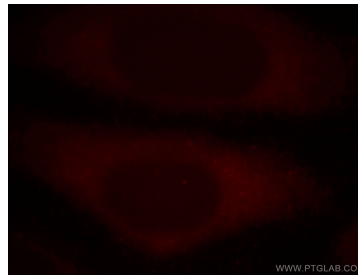
E: proteintech@ptglab.com
W: ptglab.com

This product is exclusively available under Proteintech Group brand and is not available to purchase from any other manufacturer.

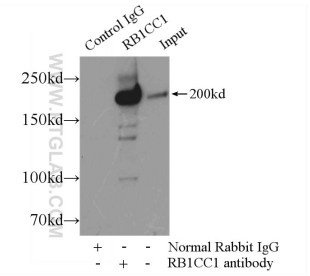
Selected Validation Data



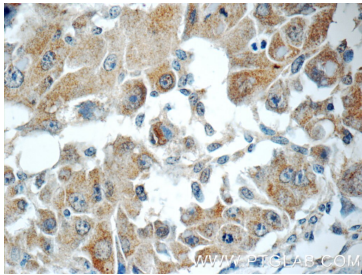
WB result of RB1CC1 antibody (17250-1-AP, 1:2000) with si-Control and si-RB1CC1 transfected HEK293 cells.



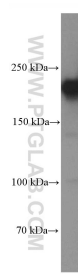
Immunofluorescent analysis of HepG2 cells, using RB1CC1 antibody 17250-1-AP at 1:25 dilution and Rhodamine-labeled goat anti-rabbit IgG (red).



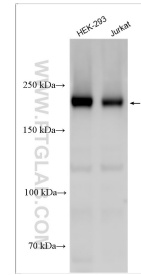
IP Result of anti-RB1CC1 (IP:17250-1-AP, 5ug; Detection:17250-1-AP 1:500) with HEK-293 cells lysate 2500ug.



Immunohistochemical analysis of paraffin-embedded human liver cancer tissue slide using 17250-1-AP (RB1CC1 Antibody) at dilution of 1:50 (under 40x lens).



HEK-293 cells were subjected to SDS PAGE followed by western blot with 17250-1-AP (RB1CC1 antibody) at dilution of 1:3000 incubated at room temperature for 1.5 hours.



Various lysates were subjected to SDS PAGE followed by western blot with 17250-1-AP (RB1CC1 antibody) at dilution of 1:15000 incubated at room temperature for 1.5 hours.