

For Research Use Only

PARP9 Polyclonal antibody

Catalog Number: 17535-1-AP

Featured Product

4 Publications



Basic Information

Catalog Number: 17535-1-AP	GenBank Accession Number: BC039580	Purification Method: Antigen affinity purification
Size: 150ul , Concentration: 450 µg/ml by Nanodrop;	GeneID (NCBI): 83666	Recommended Dilutions: WB 1:2000-1:12000 IP 0.5-4.0 ug for IP and 1:500-1:1000
Source: Rabbit	Full Name: poly (ADP-ribose) polymerase family, member 9	for WB IHC 1:20-1:200
Isotype: IgG	Calculated MW: 819 aa, 92 kDa	
Immunogen Catalog Number: AG11587	Observed MW: 88 kDa	

Applications

Tested Applications:
IHC, IP, WB, ELISA

Cited Applications:
IF, WB

Species Specificity:
human, rat

Cited Species:
human, treeshrew

Positive Controls:

WB: Raji cells, THP-1 cells

IP: MCF-7 cells,

IHC: human spleen tissue, human skin tissue, human kidney tissue, human heart tissue, human lung tissue, human ovary tissue, human lymphoma tissue

Note-IHC: suggested antigen retrieval with TE buffer pH 9.0; (*) Alternatively, antigen retrieval may be performed with citrate buffer pH 6.0

Background Information

Poly(ADP-ribosyl)ation is a post-translational modification of proteins mediated by one of the 17 members of the poly(ADP-ribose) polymerases (PARP). PARP-9 belongs to the subfamily of macroPARPs, associating one to three macro domains to the PARP domain. Overexpression of PARP-9 stimulates cell migration in vitro, suggesting a role for PARP-9 in the promotion of malignant B cell migration and dissemination in high risk DLBCL. PARP-9 is also likely a transcription coactivator, its overexpression in B lymphocytes, stimulated by IFN γ , inducing the transcription of IFN γ -controlled genes.

Notable Publications

Author	Pubmed ID	Journal	Application
Ling Xu	32376647	J Immunol	IF, WB
Xinghong Tang	30128030	Oncol Lett	WB
Xinyi Wang	29456019	Mol Ther	WB

Storage

Storage:

Store at -20°C. Stable for one year after shipment.

Storage Buffer:

PBS with 0.02% sodium azide and 50% glycerol pH 7.3.

Aliquoting is unnecessary for -20°C storage

*** 20ul sizes contain 0.1% BSA

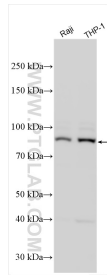
For technical support and original validation data for this product please contact:

T: 1 (888) 4PTGLAB (1-888-478-4522) (toll free in USA), or 1(312) 455-8498 (outside USA)

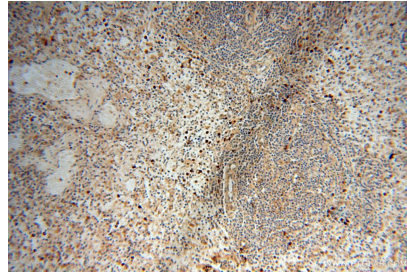
E: proteintech@ptglab.com
W: ptglab.com

This product is exclusively available under Proteintech Group brand and is not available to purchase from any other manufacturer.

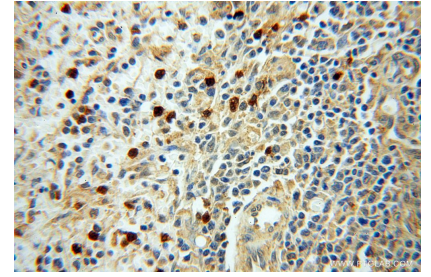
Selected Validation Data



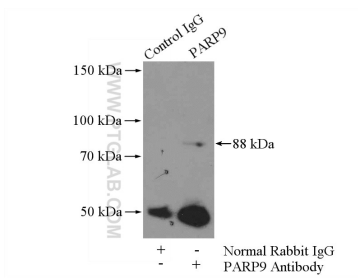
Various lysates were subjected to SDS PAGE followed by western blot with 17535-1-AP (PARP9 antibody) at dilution of 1:6000 incubated at room temperature for 1.5 hours.



Immunohistochemical analysis of paraffin-embedded human spleen using 17535-1-AP (PARP9 antibody) at dilution of 1:50 (under 10x lens).



Immunohistochemical analysis of paraffin-embedded human spleen using 17535-1-AP (PARP9 antibody) at dilution of 1:50 (under 40x lens).



IP Result of anti-PARP9 (IP:17535-1-AP, 4 μ g; Detection:17535-1-AP 1:500) with MCF-7 cells lysate 4000 μ g.