

For Research Use Only

# MMP3 Polyclonal antibody

Catalog Number: 17873-1-AP

Featured Product

188 Publications



## Basic Information

<b>Catalog Number:</b> 17873-1-AP	<b>GenBank Accession Number:</b> BC074869	<b>Purification Method:</b> Antigen affinity purification
<b>Size:</b> 150ul , Concentration: 400 µg/ml by Nanodrop;	<b>GeneID (NCBI):</b> 4314	<b>Recommended Dilutions:</b> WB 1:500-1:2000 IHC 1:20-1:200 IF 1:200-1:800
<b>Source:</b> Rabbit	<b>UNIPROT ID:</b> P08254	
<b>Isotype:</b> IgG	<b>Full Name:</b> matrix metalloproteinase 3 (stromelysin 1, progelatinase)	
<b>Immunogen Catalog Number:</b> AG12359	<b>Calculated MW:</b> 477 aa, 54 kDa	
	<b>Observed MW:</b> 45-60 kDa	

## Applications

### Tested Applications:

WB, IF, IHC, ELISA

### Cited Applications:

WB, IF, FC, IHC

### Species Specificity:

human, mouse, rat

### Cited Species:

human, rat, mouse, rabbit, pig, bovine

**Note-IHC: suggested antigen retrieval with TE buffer pH 9.0; (\*) Alternatively, antigen retrieval may be performed with citrate buffer pH 6.0**

### Positive Controls:

**WB:** A2780 cells, A549 cells, HeLa cells, human skeletal muscle tissue, U-87 MG cells, PC-12 cells

**IHC:** human breast cancer tissue, human stomach cancer tissue

**IF:** A549 cells,

## Background Information

Matrix metalloproteinases (MMPs) play a critically important role in extracellular matrix remodeling and have been implicated in a number of key normal and pathologic processes. These proteases have come to represent important therapeutic and diagnostic targets for the treatment and detection of human cancers. MMP-3 activate procollagenase via two pathways: slow direct activation and rapid activation in conjunction with tissue or plasma proteinases. The pro-MMP3 (60 kDa) and the active MMP3 (47 kDa) can be detected through western blot.

## Notable Publications

Author	Pubmed ID	Journal	Application
Chun-Na Lan	34590154	Mol Med Rep	WB
Yitong Zhao	36156740	J Bone Miner Metab	WB
Xinghuo Wu	31554783	Exp Mol Med	WB

## Storage

### Storage:

Store at -20°C. Stable for one year after shipment.

### Storage Buffer:

PBS with 0.02% sodium azide and 50% glycerol pH 7.3.

Aliquoting is unnecessary for -20°C storage

\*\*\* 20ul sizes contain 0.1% BSA

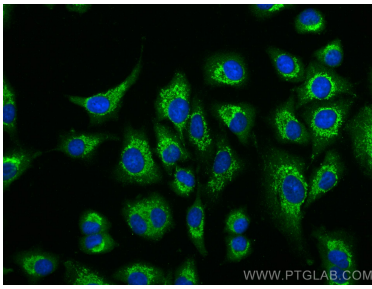
For technical support and original validation data for this product please contact:

T: 1 (888) 4PTGLAB (1-888-478-4522) (toll free in USA), or 1(312) 455-8498 (outside USA)

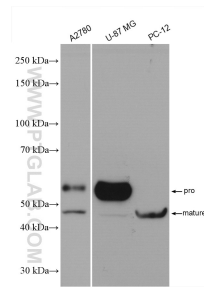
E: proteintech@ptglab.com  
W: ptglab.com

This product is exclusively available under Proteintech Group brand and is not available to purchase from any other manufacturer.

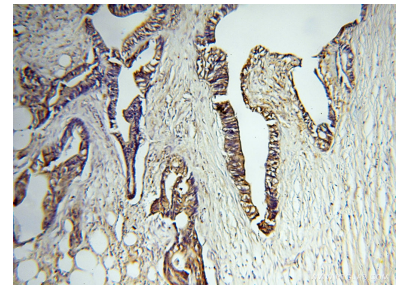
## Selected Validation Data



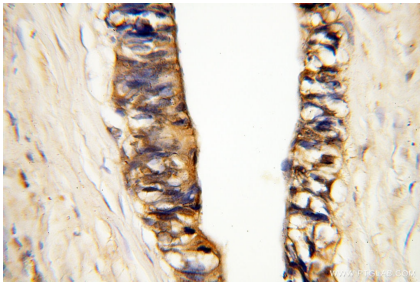
Immunofluorescent analysis of (-20°C Methanol) fixed A549 cells using MMP3 antibody (17873-1-AP) at dilution of 1:400 and CoraLite®488-Conjugated AffiniPure Goat Anti-Rabbit IgG(H+L).



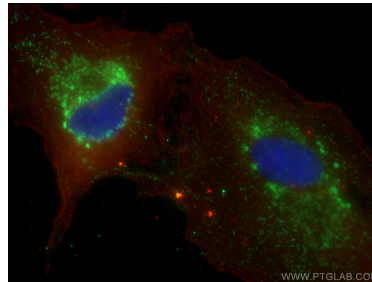
Various lysates were subjected to SDS PAGE followed by western blot with 17873-1-AP (MMP3 antibody) at dilution of 1:1000 incubated at room temperature for 1.5 hours.



Immunohistochemical analysis of paraffin-embedded human breast cancer using 17873-1-AP (MMP3 antibody) at dilution of 1:100 (under 10x lens).



Immunohistochemical analysis of paraffin-embedded human breast cancer using 17873-1-AP (MMP3 antibody) at dilution of 1:100 (under 40x lens).



Immunofluorescent analysis of (-20°C Methanol) fixed A549 cells using MMP3 antibody (17873-1-AP) at dilution of 1:800 and CoraLite®488-Conjugated AffiniPure Goat Anti-Rabbit IgG(H+L), CoraLite®594 Beta Actin antibody (CL594-66009, Clone: 2D4H5, red).