

For Research Use Only

MMP13 Polyclonal antibody

Catalog Number: 18165-1-AP **388 Publications**



Basic Information

Catalog Number: 18165-1-AP	GenBank Accession Number: BC074808	Purification Method: Antigen affinity purification
Size: 150ul , Concentration: 600 µg/ml by Nanodrop;	GeneID (NCBI): 4322	Recommended Dilutions: WB 1:1000-1:4000 IP 0.5-4.0 ug for 1.0-3.0 mg of total protein lysate IHC 1:50-1:500 IF 1:50-1:500
Source: Rabbit	UNIPROT ID: P45452	
Isotype: IgG	Full Name: matrix metalloproteinase 13	
Immunogen Catalog Number: AG12653	Calculated MW: 471 aa, 54 kDa	
	Observed MW: 65-70 kDa, 50-55 kDa, 40 kDa	

Applications

Tested Applications: WB, IP, IF, IHC, ELISA	Positive Controls: WB : HeLa cells, MCF-7 cells, mouse liver tissue, rat liver tissue, HepG2 cells, MDA-MB-453s cells IP : MCF-7 cells, IHC : human liver tissue, human hepatocirrhosis tissue, mouse liver tissue, human liver cancer tissue, human breast cancer tissue IF : MCF-7 cells,
Cited Applications: WB, IF, IHC	
Species Specificity: human, mouse, rat	
Cited Species: human, rat, mouse, rabbit, zebrafish, pig, bovine	
Note-IHC: suggested antigen retrieval with TE buffer pH 9.0; (*) Alternatively, antigen retrieval may be performed with citrate buffer pH 6.0	

Background Information

MMP-13(Matrix metalloproteinase-13), cleaves type I collagen and was previously thought to be the rodent analogue of human interstitial MMP-1. MMP-13 is found in hypertrophic and calcifying cartilage of mammalian growth plate. The bands seen with rat MMP-13 are consistent with a 59-kDa latent form and a 43-kDa active form reported for this enzyme, along with a smaller band at approximately 30 kDa(PMID:10771523). It also can be detected 3 bands that the glycosylated proMMP-13 (70 kDa), unglycosylated proform (55 kDa), and active MMP-13 enzyme (40kDa) by western blot(PMID:18332263).

Notable Publications

Author	Pubmed ID	Journal	Application
Yangfei Yi	36178080	Orthop Surg	WB,IHC
Yanlin Cao	34593020	Arthritis Res Ther	WB
Yangke Cai	29097832	Dis Markers	WB

Storage

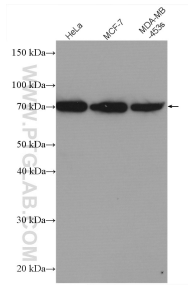
Storage:
Store at -20°C. Stable for one year after shipment.
Storage Buffer:
PBS with 0.02% sodium azide and 50% glycerol pH 7.3.
Aliquoting is unnecessary for -20°C storage

*** 20ul sizes contain 0.1% BSA

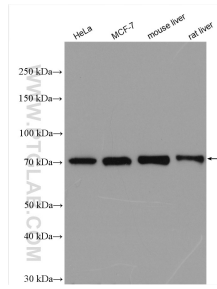
For technical support and original validation data for this product please contact:
T: 1 (888) 4PTGLAB (1-888-478-4522) (toll free in USA), or 1(312) 455-8498 (outside USA) E: proteintech@ptglab.com W: ptglab.com

This product is exclusively available under Proteintech Group brand and is not available to purchase from any other manufacturer.

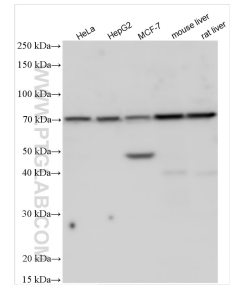
Selected Validation Data



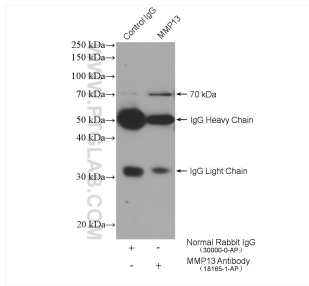
Various lysates were subjected to SDS PAGE followed by western blot with 18165-1-AP (MMP13 antibody) at dilution of 1:500 incubated at room temperature for 1.5 hours.



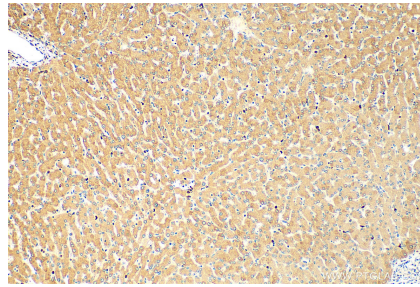
Various lysates were subjected to SDS PAGE followed by western blot with 18165-1-AP (MMP13 antibody) at dilution of 1:2000 incubated at room temperature for 1.5 hours.



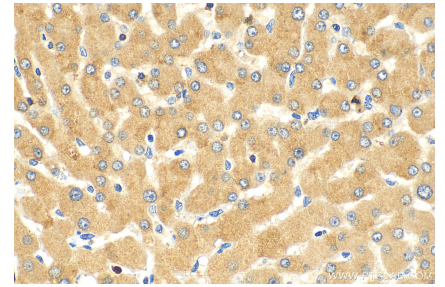
Various lysates were subjected to SDS PAGE followed by western blot with 18165-1-AP (MMP13 antibody) at dilution of 1:3000 incubated at room temperature for 1.5 hours.



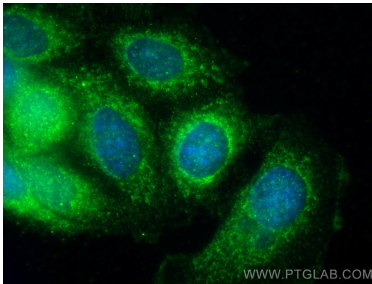
IP result of anti-MMP13 (IP:18165-1-AP, 4ug; Detection:18165-1-AP 1:300) with MCF-7 cells lysate 2480 ug.



Immunohistochemical analysis of paraffin-embedded human liver tissue slide using 18165-1-AP (MMP13 antibody) at dilution of 1:200 (under 10x lens). Heat mediated antigen retrieval with Tris-EDTA buffer (pH 9.0).



Immunohistochemical analysis of paraffin-embedded human liver tissue slide using 18165-1-AP (MMP13 antibody) at dilution of 1:200 (under 40x lens). Heat mediated antigen retrieval with Tris-EDTA buffer (pH 9.0).



Immunofluorescent analysis of (-20°C Methanol) fixed MCF-7 cells using MMP13 antibody (18165-1-AP) at dilution of 1:200 and CoraLite®488-Conjugated AffiniPure Goat Anti-Rabbit IgG(H+L).