

For Research Use Only

# Cyclin A2 Polyclonal antibody

Catalog Number: 18202-1-AP

Featured Product

160 Publications



## Basic Information

### Catalog Number:

18202-1-AP

### Size:

150ul, Concentration: 850 µg/ml by Nanodrop;

### Source:

Rabbit

### Isotype:

IgG

### Immunogen Catalog Number:

AG12765

### GenBank Accession Number:

BC104783

### GeneID (NCBI):

890

### UNIPROT ID:

P20248

### Full Name:

cyclin A2

### Calculated MW:

432 aa, 49 kDa

### Observed MW:

48-52 kDa

### Purification Method:

Antigen affinity purification

### Recommended Dilutions:

WB 1:5000-1:50000

IP 0.5-4.0 µg for 1.0-3.0 mg of total protein lysate

IHC 1:500-1:2000

IF 1:200-1:800

## Applications

### Tested Applications:

WB, IP, FC, ELISA

### Cited Applications:

WB, ColP

### Species Specificity:

human, mouse

### Cited Species:

human, rat, mouse, monkey, pig

### Positive Controls:

WB: HL-60 cells, K-562 cells, U-937 cells, HeLa cells, NIH/3T3 cells, MCF-7 cells

IP: HeLa cells, HL-60 cells

IHC: human tonsillitis tissue, human breast cancer tissue, human colon cancer tissue

IF: HepG2 cells, MCF-7 cells

**Note-IHC: suggested antigen retrieval with TE buffer pH 9.0; (\*) Alternatively, antigen retrieval may be performed with citrate buffer pH 6.0**

## Background Information

Cyclin A2 belongs to the highly conserved cyclin family, whose members are characterized by a dramatic periodicity in protein abundance through the cell cycle. Cyclins function as regulators of CDK kinases. Different cyclins exhibit distinct expression and degradation patterns which contribute to the temporal coordination of each mitotic event. In contrast to cyclin A1, which is present only in germ cells, this cyclin is expressed in all tissues tested. Cyclin A2 binds and activates CDC2 or CDK2 kinases, and thus promotes both cell cycle G1/S and G2/M transitions. Cyclin A2 could be phosphorylated during the G2/M.

## Notable Publications

Author	Pubmed ID	Journal	Application
Wei-Liang Ye	26419507	Sci Rep	WB
Ousman Tamgue	28952292	Asian Pac J Cancer Prev	WB
Xie Mengyan	36176446	Front Pharmacol	WB

## Storage

### Storage:

Store at -20°C. Stable for one year after shipment.

### Storage Buffer:

PBS with 0.02% sodium azide and 50% glycerol pH 7.3.

Aliquoting is unnecessary for -20°C storage

\*\*\* 20ul sizes contain 0.1% BSA

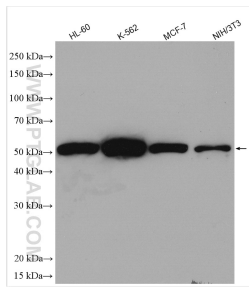
For technical support and original validation data for this product please contact:

T: 1 (888) 4PTGLAB (1-888-478-4522) (toll free in USA), or 1(312) 455-8498 (outside USA)

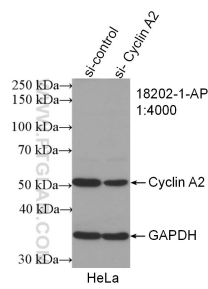
E: proteintech@ptglab.com  
W: ptglab.com

This product is exclusively available under Proteintech Group brand and is not available to purchase from any other manufacturer.

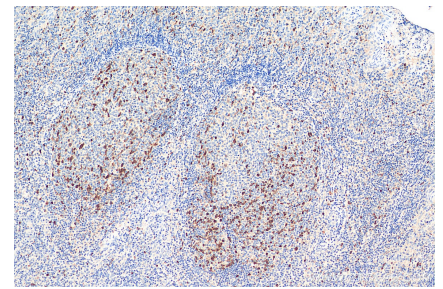
## Selected Validation Data



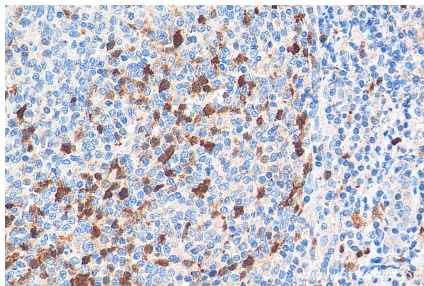
Various lysates were subjected to SDS PAGE followed by western blot with 18202-1-AP (Cyclin A2 antibody) at dilution of 1:10000 incubated at room temperature for 1.5 hours.



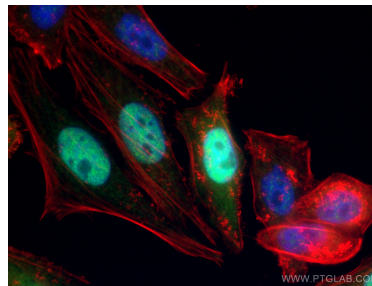
WB result of Cyclin A2 antibody (18202-1-AP; 1:4000; incubated at room temperature for 1.5 hours) with sh-Control and sh-Cyclin A2 transfected HeLa cells.



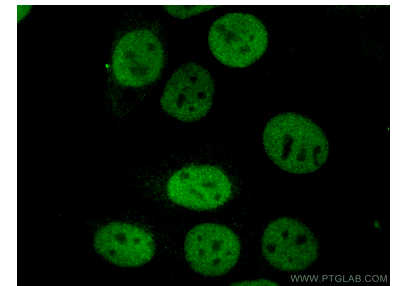
Immunohistochemical analysis of paraffin-embedded human tonsillitis tissue slide using 18202-1-AP (Cyclin A2 antibody) at dilution of 1:1000 (under 10x lens). Heat mediated antigen retrieval with Tris-EDTA buffer (pH 9.0).



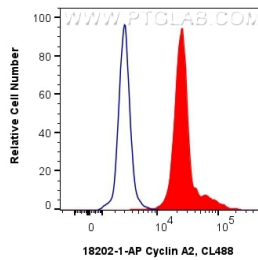
Immunohistochemical analysis of paraffin-embedded human tonsillitis tissue slide using 18202-1-AP (Cyclin A2 antibody) at dilution of 1:1000 (under 40x lens). Heat mediated antigen retrieval with Tris-EDTA buffer (pH 9.0).



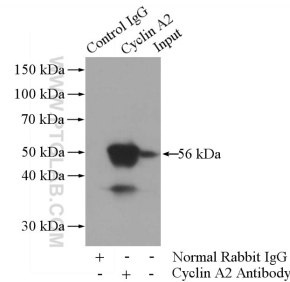
Immunofluorescent analysis of (4% PFA) fixed HepG2 cells using Cyclin A2 antibody (18202-1-AP) at dilution of 1:400 and Coralite@488-Conjugated AffiniPure Goat Anti-Rabbit IgG(H+L), CL594-Phalloidin (red).



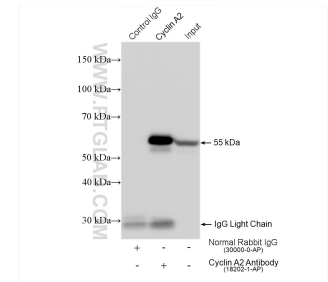
Immunofluorescent analysis of (4% PFA) fixed MCF-7 cells using Cyclin A2 antibody (18202-1-AP) at dilution of 1:200 and Coralite@488-Conjugated AffiniPure Goat Anti-Rabbit IgG(H+L).



1X10<sup>6</sup> HeLa cells were intracellularly stained with 0.4 ug Anti-Human Cyclin A2 (18202-1-AP) and Coralite@488-Conjugated AffiniPure Goat Anti-Rabbit IgG(H+L) at dilution 1:1000 (red), or 0.4 ug Rabbit IgG control Rabbit PolyAb (30000-O-AP, Clone: ) (blue). Cells were fixed and permeabilized with True-Nuclear Transcription Factor Buffer Set.



IP result of anti-Cyclin A2 (IP:18202-1-AP, 3ug; Detection:18202-1-AP 1:500) with HL-60 cells lysate 4000ug.



IP result of anti-Cyclin A2 (IP:18202-1-AP, 4ug; Detection:18202-1-AP 1:20000) with HeLa cells lysate 1320 ug.