

For Research Use Only

# KLF13 Polyclonal antibody

Catalog Number: 18352-1-AP

Featured Product

10 Publications



## Basic Information

<b>Catalog Number:</b> 18352-1-AP	<b>GenBank Accession Number:</b> BC012741	<b>Purification Method:</b> Antigen affinity purification
<b>Size:</b> 150ul , Concentration: 350 µg/ml by Nanodrop and 307 µg/ml by Bradford method using BSA as the standard;	<b>GeneID (NCBI):</b> 51621	<b>Recommended Dilutions:</b> WB 1:1000-1:4000 IHC 1:20-1:200
<b>Source:</b> Rabbit	<b>Full Name:</b> Kruppel-like factor 13	
<b>Isotype:</b> IgG	<b>Calculated MW:</b> 31 kDa	
<b>Immunogen Catalog Number:</b> AG13200	<b>Observed MW:</b> 37-45 kDa	

## Applications

<b>Tested Applications:</b> IHC, WB, ELISA	<b>Positive Controls:</b> WB : HT-29 cells, rat liver tissue IHC : human brain tissue,
<b>Cited Applications:</b> IF, IHC, WB	
<b>Species Specificity:</b> human, rat, mouse	
<b>Cited Species:</b> human, mouse	
<b>Note-IHC: suggested antigen retrieval with TE buffer pH 9.0; (*) Alternatively, antigen retrieval may be performed with citrate buffer pH 6.0</b>	

## Background Information

Kruppel-like factor 13(KLF13) is a member of transcription factors, which contains 3 zinc finger DNA-binding domains. These transcription factors bind to CG-rich sequences and related GT and CACCC boxes. KLF13 involved in activation of transcription of variety of genes in the cells of erythroid lineage, such as GATA1, glycophorin B. It also binds to the A and A/B RANTES promoter binding sites, the same as NFkB, and then transactivates the RANTES gene. The calculated molecular weight of KLF13 is 31 kDa, but the modified KLF13 protein is about 37-45 kDa.

## Notable Publications

Author	Pubmed ID	Journal	Application
Joshua E Burda	35614216	Nature	IHC
Chao-Chun Chen	36381108	J Clin Transl Hepatol	WB,IHC
Weilong Yao	32523679	Cell Biosci	WB

## Storage

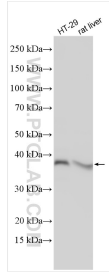
**Storage:**  
Store at -20°C. Stable for one year after shipment.  
**Storage Buffer:**  
PBS with 0.02% sodium azide and 50% glycerol pH 7.3.  
Aliquoting is unnecessary for -20°C storage

\*\*\* 20ul sizes contain 0.1% BSA

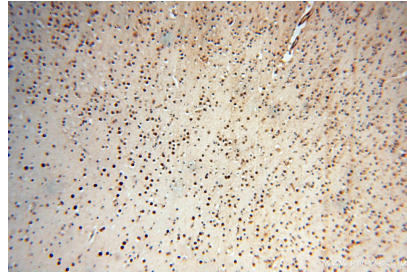
For technical support and original validation data for this product please contact:  
T: 1 (888) 4PTGLAB (1-888-478-4522) (toll free in USA), or 1(312) 455-8498 (outside USA)  
E: proteintech@ptglab.com  
W: ptglab.com

This product is exclusively available under Proteintech Group brand and is not available to purchase from any other manufacturer.

## Selected Validation Data



Various lysates were subjected to SDS PAGE followed by western blot with 18352-1-AP (KLF13 antibody) at dilution of 1:2000 incubated at room temperature for 1.5 hours.



Immunohistochemical analysis of paraffin-embedded human brain using 18352-1-AP (KLF13 antibody) at dilution of 1:50 (under 10x lens).