

For Research Use Only

IGFBP4 Polyclonal antibody

Catalog Number: 18500-1-AP **7 Publications**



Basic Information

Catalog Number: 18500-1-AP	GenBank Accession Number: BC016041	Purification Method: Antigen affinity purification
Size: 150ul, Concentration: 400 µg/ml by Nanodrop and 300 µg/ml by Bradford method using BSA as the standard;	GeneID (NCBI): 3487	Recommended Dilutions: WB 1:500-1:3000 IHC 1:50-1:500 IF 1:10-1:100
Source: Rabbit	Full Name: insulin-like growth factor binding protein 4	
Isotype: IgG	Calculated MW: 28 kDa	
Immunogen Catalog Number: AG13347	Observed MW: 28-40 kDa	

Applications

Tested Applications: IF, IHC, WB, ELISA	Positive Controls: WB : C6 cells, IHC : human liver tissue, human colon tissue IF : C6 cells,
Cited Applications: IF, IHC, WB	
Species Specificity: human, rat	
Cited Species: human, chicken	

Note-IHC: suggested antigen retrieval with TE buffer pH 9.0; (*) Alternatively, antigen retrieval may be performed with citrate buffer pH 6.0

Background Information

IGFBP4, also named as IBP4, is a 258 amino acid protein, which contains one IGFBP N-terminal domain and one thyroglobulin type-1 domain. IGFBP4 is the smallest member of the insulin-like growth factor binding protein family (IGFBP). It is a hepatic protein that plays a role in modulating the activity and bioavailability of IGF-I. The expression of IGFBP4 was found to increase under conditions of hypoxia. IGFBP4 is highly expressed in adipocytes and osteoblasts and is inhibitory of IGFs in vitro. (PMID: 28938423, PMID: 34646401). IGFBP4 is a secreted protein and calculated molecular weight is 28 kDa.

Notable Publications

Author	Pubmed ID	Journal	Application
Wenwen Guo	34888242	Front Oncol	IHC
Cynthia Hajal	34162553	Sci Adv	IF
Jie Yang	28734787	Cell Signal	WB

Storage

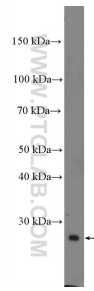
Storage:
Store at -20°C. Stable for one year after shipment.
Storage Buffer:
PBS with 0.02% sodium azide and 50% glycerol pH 7.3.
Aliquoting is unnecessary for -20°C storage

*** 20ul sizes contain 0.1% BSA

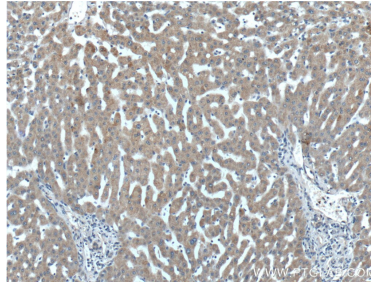
For technical support and original validation data for this product please contact:
T: 1 (888) 4PTGLAB (1-888-478-4522) (toll free in USA), or 1(312) 455-8498 (outside USA)
E: proteintech@ptglab.com
W: ptglab.com

This product is exclusively available under Proteintech Group brand and is not available to purchase from any other manufacturer.

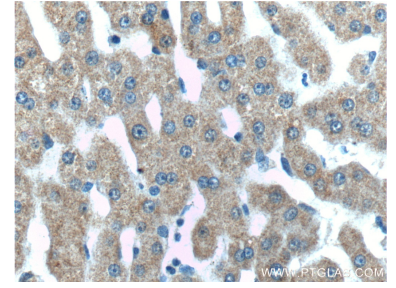
Selected Validation Data



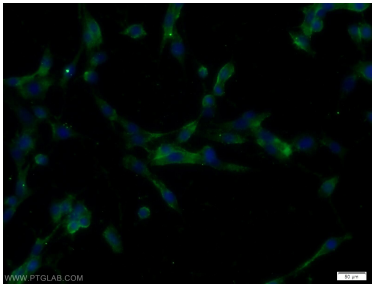
C6 cells were subjected to SDS PAGE followed by western blot with 18500-1-AP (IGFBP4 Antibody) at dilution of 1:1500 incubated at room temperature for 1.5 hours.



Immunohistochemical analysis of paraffin-embedded human liver tissue slide using 18500-1-AP (IGFBP4 Antibody) at dilution of 1:200 (under 10x lens).



Immunohistochemical analysis of paraffin-embedded human liver tissue slide using 18500-1-AP (IGFBP4 Antibody) at dilution of 1:200 (under 40x lens).



Immunofluorescent analysis of C6 cells using 18500-1-AP (IGFBP4 antibody) at dilution of 1:25 and Alexa Fluor 488-conjugated AffiniPure Goat Anti-Rabbit IgG(H+L).