

For Research Use Only

CEP192 Polyclonal antibody

Catalog Number: 18832-1-AP **13 Publications**



Basic Information

Catalog Number: 18832-1-AP	GenBank Accession Number: BC144481	Purification Method: Antigen affinity purification
Size: 150ul , Concentration: 900 µg/ml by Nanodrop;	GeneID (NCBI): 55125	Recommended Dilutions: IP 0.5-4.0 ug for 1.0-3.0 mg of total protein lysate IHC 1:50-1:500 IF 1:50-1:500
Source: Rabbit	UNIPROT ID: Q8TEP8	
Isotype: IgG	Full Name: centrosomal protein 192kDa	
	Calculated MW: 213 kDa	
	Observed MW: 250-300 kDa	

Applications

Tested Applications: IP, IF, IHC, ELISA	Positive Controls: IP : HeLa cells, IHC : human liver cancer tissue, IF : hTERT-RPE1 cells, HeLa cells
Cited Applications: WB, IF, IHC	
Species Specificity: human	
Cited Species: human, mouse	
Note-IHC: suggested antigen retrieval with TE buffer pH 9.0; (*) Alternatively, antigen retrieval may be performed with citrate buffer pH 6.0	

Background Information

CEP192, also named as PP8407 and KIAA1569, interacts with SHBG. It is required for mitotic centrosome and spindle assembly. CEP192 appears to be a major regulator of pericentriolar material (PCM) recruitment, centrosome maturation, and centriole duplication.

Notable Publications

Author	Pubmed ID	Journal	Application
Yanli Liu	36238304	Front Immunol	IHC,IF
Tianyu Wu	36395215	Science	IF
Alyssa C Rezey	31101859	Sci Rep	IF

Storage

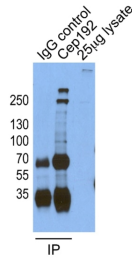
Storage:
Store at -20°C. Stable for one year after shipment.
Storage Buffer:
PBS with 0.02% sodium azide and 50% glycerol pH 7.3.
Aliquoting is unnecessary for -20°C storage

*** 20ul sizes contain 0.1% BSA

For technical support and original validation data for this product please contact:
T: 1 (888) 4PTGLAB (1-888-478-4522) (toll free in USA), or 1(312) 455-8498 (outside USA)
E: proteintech@ptglab.com
W: ptglab.com

This product is exclusively available under Proteintech Group brand and is not available to purchase from any other manufacturer.

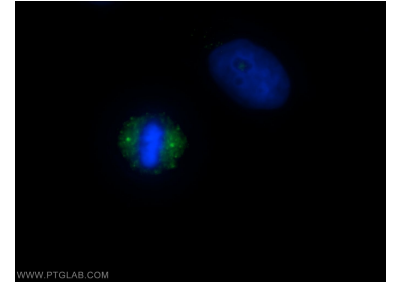
Selected Validation Data



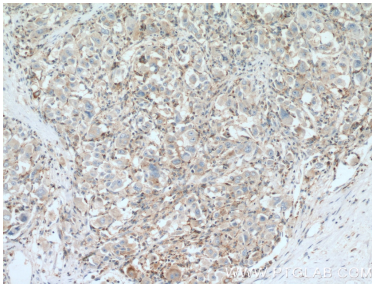
IP result of anti-CEP192 (18832-1-AP for IP and Detection) with HeLa cells.



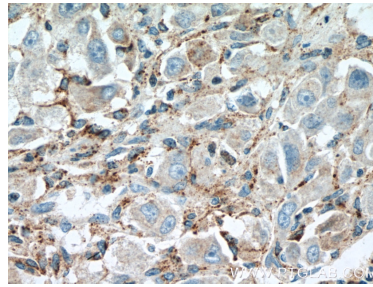
Immunofluorescent analysis of (-20°C Methanol) fixed hTERT-RPE1 cells using CEP192 antibody (18832-1-AP) at dilution of 1:150 and Cy3-conjugated Affinipure Goat Anti-Rabbit IgG(H+L), SCLT1 antibody (14875-1-AP, Magenta), CoraLite®488 ARL13B antibody (CL488-17711, green).



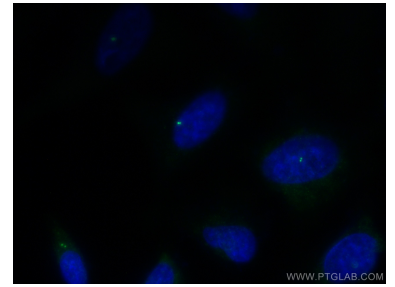
Immunofluorescent analysis of HeLa cells using 18832-1-AP (CEP192 antibody) at dilution of 1:50 and Alexa Fluor 488-conjugated AffiniPure Goat Anti-Rabbit IgG(H+L).



Immunohistochemical analysis of paraffin-embedded human liver cancer tissue slide using 18832-1-AP (CEP192 antibody) at dilution of 1:200 (under 10x lens. Heat mediated antigen retrieval with Tris-EDTA buffer (pH 9.0).



Immunohistochemical analysis of paraffin-embedded human liver cancer tissue slide using 18832-1-AP (CEP192 antibody) at dilution of 1:200 (under 40x lens. Heat mediated antigen retrieval with Tris-EDTA buffer (pH 9.0).



Immunofluorescent analysis of (-20°C Methanol) fixed HeLa cells using CEP192 antibody (18832-1-AP) at dilution of 1:200 and CoraLite®488-Conjugated AffiniPure Goat Anti-Rabbit IgG(H+L).