

For Research Use Only

Nestin Polyclonal antibody

Catalog Number: 19483-1-AP **76 Publications**



Basic Information

Catalog Number: 19483-1-AP	GenBank Accession Number: NM_006617	Purification Method: Antigen affinity purification
Size: 150ul , Concentration: 600 µg/ml by Nanodrop;	GeneID (NCBI): 10763	Recommended Dilutions: WB 1:500-1:1000 IHC 1:200-1:800 IF 1:50-1:500
Source: Rabbit	UNIPROT ID: P48681	
Isotype: IgG	Full Name: nestin	
	Calculated MW: 177 kDa	
	Observed MW: 170-180 kDa	

Applications

Tested Applications: WB, IF, IHC, ELISA	Positive Controls: WB : mouse brain tissue, rat brain tissue
Cited Applications: WB, IF, FC, IHC	IHC : human kidney tissue, human gliomas tissue, mouse brain tissue
Species Specificity: human, mouse, rat	IF : rat brain tissue, SH-SY5Y cells, mouse brain tissue, U-251 cells
Cited Species: human, rat, mouse, zebrafish	
Note-IHC: suggested antigen retrieval with TE buffer pH 9.0; (*) Alternatively, antigen retrieval may be performed with citrate buffer pH 6.0	

Background Information

Nestin, also named as NES and Nbla00170, is a class VI intermediate filament protein expressed in stem cells of the central nervous system (CNS) but not in mature CNS cells. Its expression is used extensively as a marker for neural lineage cells derived from human embryonic stem (hES) and induced pluripotent stem (iPS) cells. Nestin is also expressed in non-neural stem cell populations such as pancreatic islet progenitors and hematopoietic progenitors. Nestin can be detected as 220-240 kDa and 240-280 kDa. Studies point toward nestin heavy posttranslational modifications as possibly serving particular functions in podocytes and in a few other particular cell types (PMID: 17210924).

Notable Publications

Author	Pubmed ID	Journal	Application
Chenlong Li	31558707	Cell Death Dis	WB
Lili Ma	36132985	J Immunol Res	IF
Jiansheng Chen	31511040	J Exp Clin Cancer Res	WB

Storage

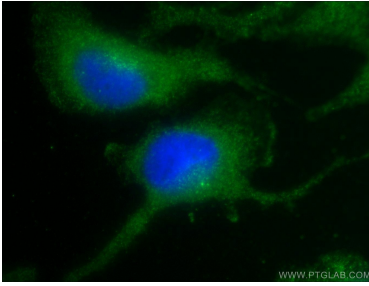
Storage:
Store at -20°C. Stable for one year after shipment.
Storage Buffer:
PBS with 0.02% sodium azide and 50% glycerol pH 7.3.
Aliquoting is unnecessary for -20°C storage

*** 20ul sizes contain 0.1% BSA

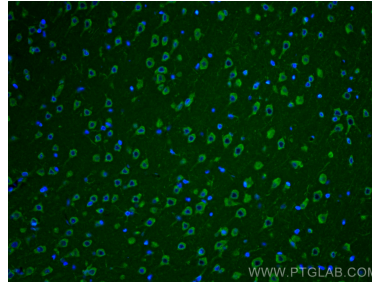
For technical support and original validation data for this product please contact:
T: 1 (888) 4PTGLAB (1-888-478-4522) (toll free in USA), or 1(312) 455-8498 (outside USA)
E: proteintech@ptglab.com
W: ptglab.com

This product is exclusively available under Proteintech Group brand and is not available to purchase from any other manufacturer.

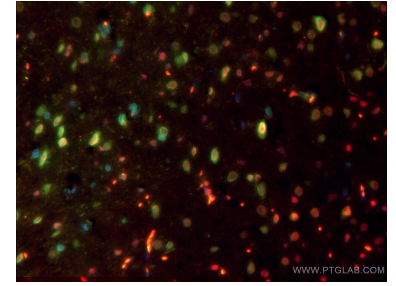
Selected Validation Data



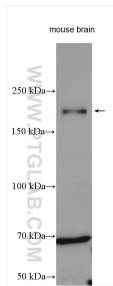
Immunofluorescent analysis of U-251 cells using 19483-1-AP (Nestin antibody) at dilution of 1:25 and Alexa Fluor 488-conjugated AffiniPure Goat Anti-Rabbit IgG(H+L).



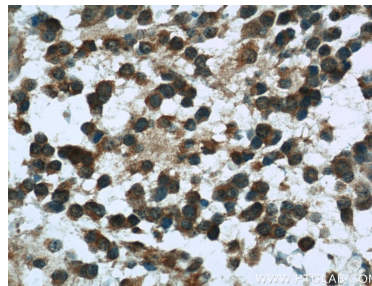
Immunofluorescent analysis of (4% PFA) fixed rat brain tissue using Nestin antibody (19483-1-AP) at dilution of 1:200 and CoraLite®488-Conjugated AffiniPure Goat Anti-Rabbit IgG(H+L).



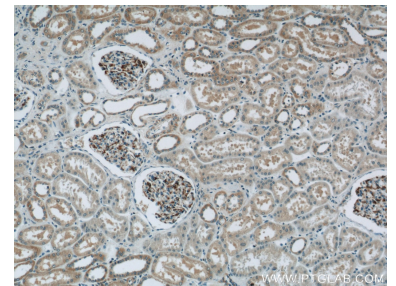
Immunofluorescent analysis of (4% PFA) fixed rat brain tissue using 19483-1-AP (Nestin antibody) at dilution of 1:100 and CoraLite488-Conjugated AffiniPure Goat Anti-Rabbit IgG(H+L). The section was co-stained with sox2 (66411-1-Ig, red).



Mouse brain lysates were subjected to SDS PAGE followed by western blot with 19483-1-AP (Nestin antibody) at dilution of 1:500 incubated at room temperature for 1.5 hours.



Immunohistochemical analysis of paraffin-embedded human gliomas tissue slide using 19483-1-AP (Nestin Antibody) at dilution of 1:100 (under 40x lens).



Immunohistochemical analysis of paraffin-embedded human kidney tissue slide using 19483-1-AP (Nestin Antibody) at dilution of 1:400 (under 10x lens).