

For Research Use Only

FEM1B Polyclonal antibody

Catalog Number: 19544-1-AP

Featured Product

2 Publications



Basic Information

Catalog Number:

19544-1-AP

Size:

150ul, Concentration: 750 µg/ml by Nanodrop and 333 µg/ml by Bradford method using BSA as the standard;

Source:

Rabbit

Isotype:

IgG

GenBank Accession Number:

NM_015322

GeneID (NCBI):

10116

UNIPROT ID:

Q9UK73

Full Name:

fem-1 homolog b (C. elegans)

Calculated MW:

70 kDa

Observed MW:

70 kDa

Purification Method:

Antigen affinity purification

Recommended Dilutions:

WB 1:500-1:1000

IHC 1:50-1:500

IF 1:50-1:500

Applications

Tested Applications:

IF, IHC, WB, ELISA

Cited Applications:

WB

Species Specificity:

human, mouse, rat

Cited Species:

human, mouse

Note-IHC: suggested antigen retrieval with TE buffer pH 9.0; (*) Alternatively, antigen retrieval may be performed with citrate buffer pH 6.0

Positive Controls:

WB: PC-3 cells, mouse pancreas tissue, mouse testis tissue

IHC: human pancreas cancer tissue, mouse pancreas tissue

IF: PC-3 cells,

Background Information

FEM1B, also named F1AA and KIAA0396, belongs to the fem-1 family. FEM1B is a component of an E3 ubiquitin-protein ligase complex, in which it may act as a substrate recognition subunit. FEM1B is involved in apoptosis by acting as a death receptor-associated protein that mediates apoptosis. It is involved in glucose homeostasis in pancreatic islets.

Notable Publications

Author	Pubmed ID	Journal	Application
Andrew G Manford	32941802	Cell	WB
Nathaniel J. Henning	34994556	J Am Chem Soc	WB

Storage

Storage:

Store at -20°C. Stable for one year after shipment.

Storage Buffer:

PBS with 0.02% sodium azide and 50% glycerol pH 7.3.

Aliquoting is unnecessary for -20°C storage

*** 20ul sizes contain 0.1% BSA

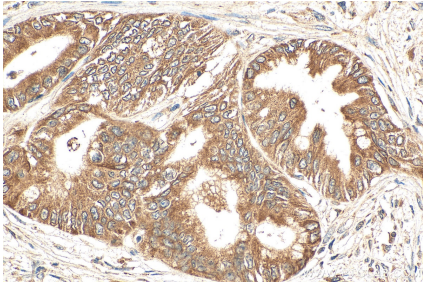
For technical support and original validation data for this product please contact:

T: 1 (888) 4PTGLAB (1-888-478-4522) (toll free in USA), or 1(312) 455-8498 (outside USA)

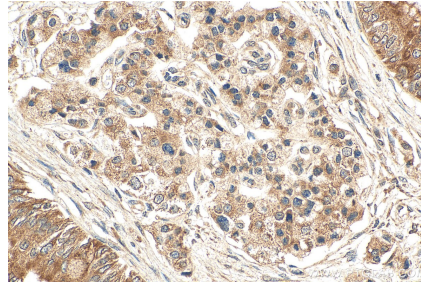
E: proteintech@ptglab.com
W: ptglab.com

This product is exclusively available under Proteintech Group brand and is not available to purchase from any other manufacturer.

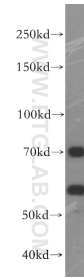
Selected Validation Data



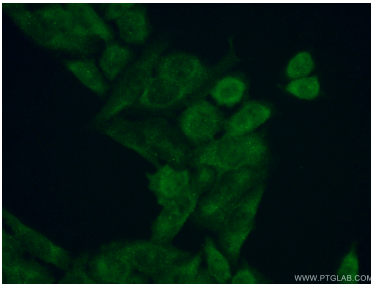
Immunohistochemical analysis of paraffin-embedded human pancreas cancer tissue slide using 19544-1-AP (FEM1B antibody) at dilution of 1:200 (under 40x lens). Heat mediated antigen retrieval with Tris-EDTA buffer (pH 9.0).



Immunohistochemical analysis of paraffin-embedded human pancreas cancer tissue slide using 19544-1-AP (FEM1B antibody) at dilution of 1:200 (under 40x lens). Heat mediated antigen retrieval with Tris-EDTA buffer (pH 9.0).



PC-3 cells were subjected to SDS PAGE followed by western blot with 19544-1-AP (FEM1B antibody) at dilution of 1:300 incubated at room temperature for 1.5 hours.



Immunofluorescent analysis of (10% Formaldehyde) fixed PC-3 cells using 19544-1-AP (FEM1B antibody) at dilution of 1:50 and Alexa Fluor 488-conjugated AffiniPure Goat Anti-Rabbit IgG(H+L).