

For Research Use Only

# PCM1 Polyclonal antibody

Catalog Number: 19856-1-AP

Featured Product

19 Publications



## Basic Information

|   |  |  |
|---|--|--|
| <b>Catalog Number:</b><br>19856-1-AP                          | <b>GenBank Accession Number:</b><br>BC000453   | <b>Purification Method:</b><br>Antigen affinity purification                                       |
| <b>Size:</b><br>150ul, Concentration: 1000 µg/ml by Nanodrop; | <b>GeneID (NCBI):</b><br>5108                  | <b>Recommended Dilutions:</b><br>WB 1:2000-1:16000<br>IP 0.5-4.0 ug for IP and 1:500-1:1000 for WB |
| <b>Source:</b><br>Rabbit                                      | <b>Full Name:</b><br>pericentriolar material 1 | <b>IHC 1:50-1:500</b>  |
| <b>Isotype:</b><br>IgG  | <b>Calculated MW:</b><br>2024 aa, 228 kDa      | <b>IF 1:50-1:500</b>   |
| <b>Immunogen Catalog Number:</b><br>AG13929                   | <b>Observed MW:</b><br>260-280 kDa             |  |

## Applications

**Tested Applications:**  
FC, IF, IHC, IP, WB, ELISA

**Cited Applications:**  
IF, IHC, IP, WB

**Species Specificity:**  
human, mouse

**Cited Species:**  
human, mouse

**Note-IHC: suggested antigen retrieval with TE buffer pH 9.0; (\*) Alternatively, antigen retrieval may be performed with citrate buffer pH 6.0**

**Positive Controls:**

**WB:** HEK-293 cells, NIH/3T3 cells, HT-1080 cells, HeLa cells

**IP:** HeLa cells,

**IHC:** human tonsillitis tissue, mouse testis tissue

**IF:** HepG2 cells, NIH/3T3 cells, HeLa cells

## Background Information

Pericentriolar material 1 (PCM1) is a component of centriolar satellites, which are electron dense granules scattered around centrosomes (PMID: 10579718). PCM1 is required for centrosome assembly and function. It acts as a scaffold to target several proteins to the centrosome in a dynein motor-dependent manner and regulate microtubular dynamics (PMID:18762586; 12403812). It is also involved in the biogenesis of cilia (PMID: 18772192). Chromosomal aberrations involving PCM1 gene are associated with papillary thyroid carcinomas and a variety of hematological malignancies, including atypical chronic myeloid leukemia and T-cell lymphoma. (PMID: 10980597; 16091753; 15805263; 16424865).

## Notable Publications

| Author       | Pubmed ID | Journal  | Application |
|--------------|-----------|----------|-------------|
| Hsuan Cheng  | 36314725  | EMBO Rep | IF          |
| Deniz Conkar | 31582766  | Sci Rep  | WB          |
| Tianyu Wu    | 36395215  | Science  | IF          |

## Storage

**Storage:**

Store at -20°C. Stable for one year after shipment.

**Storage Buffer:**

PBS with 0.02% sodium azide and 50% glycerol pH 7.3.

Aliquoting is unnecessary for -20°C storage

\*\*\* 20ul sizes contain 0.1% BSA

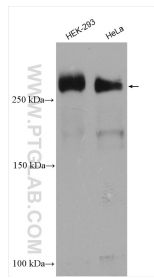
For technical support and original validation data for this product please contact:

T: 1 (888) 4PTGLAB (1-888-478-4522) (toll free in USA), or 1(312) 455-8498 (outside USA)

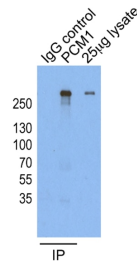
E: proteintech@ptglab.com  
W: ptglab.com

This product is exclusively available under Proteintech Group brand and is not available to purchase from any other manufacturer.

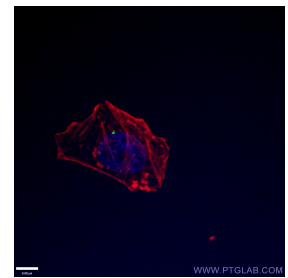
## Selected Validation Data



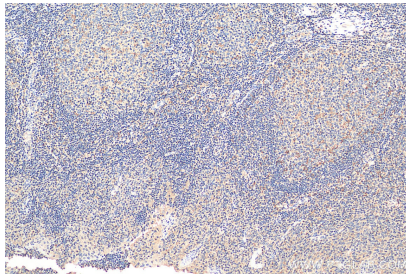
Various lysates were subjected to SDS PAGE followed by western blot with 19856-1-AP (PCM1 antibody) at dilution of 1:8000 incubated at room temperature for 1.5 hours.



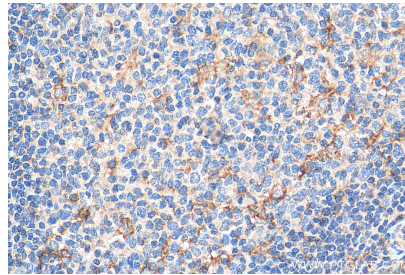
IP result of anti-PCM1 (19856-1-AP for IP and Detection) with HeLa cells.



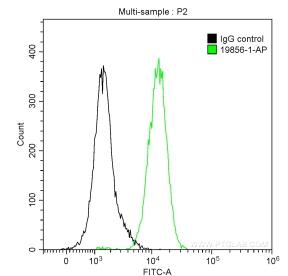
Immunofluorescent analysis of (4% PFA) fixed HepG2 cells using 19856-1-AP (PCM1 antibody) at dilution of 1:100 and CoraLite488-Conjugated AffiniPure Goat Anti-Rabbit IgG(H+L).



Immunohistochemical analysis of paraffin-embedded human tonsillitis tissue slide using 19856-1-AP (PCM1 antibody) at dilution of 1:200 (under 10x lens). Heat mediated antigen retrieval with Tris-EDTA buffer (pH 9.0).



Immunohistochemical analysis of paraffin-embedded human tonsillitis tissue slide using 19856-1-AP (PCM1 antibody) at dilution of 1:200 (under 40x lens). Heat mediated antigen retrieval with Tris-EDTA buffer (pH 9.0).



$1 \times 10^6$  HepG2 cells were intracellularly stained with 0.2 ug Anti-Human PCM1 (19856-1-AP) and CoraLite®488-Conjugated AffiniPure Goat Anti-Rabbit IgG(H+L) at dilution 1:1000 (green), or 0.2 ug Control Antibody (black). Cells were fixed with 90% MeOH.