

For Research Use Only

TRUB2 Polyclonal antibody

Catalog Number: 19891-1-AP

Featured Product

2 Publications



Basic Information

Catalog Number: 19891-1-AP	GenBank Accession Number: BC001457	Purification Method: Antigen affinity purification
Size: 150ul , Concentration: 800 µg/ml by Nanodrop and 400 µg/ml by Bradford method using BSA as the standard;	GeneID (NCBI): 26995	Recommended Dilutions: WB 1:1000-1:4000 IHC 1:1000-1:4000
Source: Rabbit	Full Name: TruB pseudouridine (psi) synthase homolog 2 (E. coli)	
Isotype: IgG	Calculated MW: 331 aa, 37 kDa	
Immunogen Catalog Number: AG13726	Observed MW: 37 kDa	

Applications

Tested Applications:
IHC, WB, ELISA

Cited Applications:
WB

Species Specificity:
human

Cited Species:
human

Note-IHC: suggested antigen retrieval with TE buffer pH 9.0; (*) Alternatively, antigen retrieval may be performed with citrate buffer pH 6.0

Positive Controls:

WB : HT-1080 cells, HeLa cells, HepG2 cells, K-562 cells

IHC : human colon cancer tissue,

Background Information

Notable Publications

Author	Pubmed ID	Journal	Application
Hana Antonicka	27974379	EMBO Rep	WB
Nicholas J Kramer	37770567	Nat Cell Biol	WB

Storage

Storage:

Store at -20°C. Stable for one year after shipment.

Storage Buffer:

PBS with 0.02% sodium azide and 50% glycerol pH 7.3.

Aliquoting is unnecessary for -20°C storage

*** 20ul sizes contain 0.1% BSA

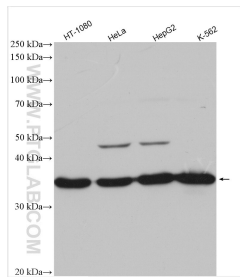
For technical support and original validation data for this product please contact:

T: 1 (888) 4PTGLAB (1-888-478-4522) (toll free in USA), or 1(312) 455-8498 (outside USA)

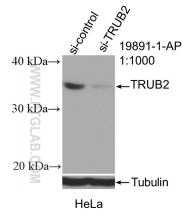
E: proteintech@ptglab.com
W: ptglab.com

This product is exclusively available under Proteintech Group brand and is not available to purchase from any other manufacturer.

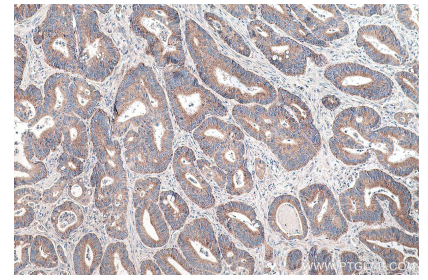
Selected Validation Data



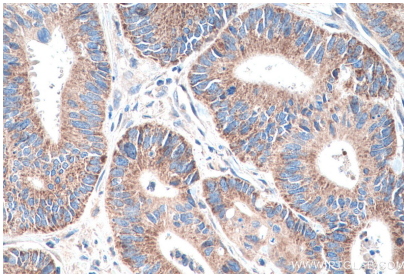
Various lysates were subjected to SDS PAGE followed by western blot with 19891-1-AP (TRUB2 antibody) at dilution of 1:2000 incubated at room temperature for 1.5 hours.



WB result of TRUB2 antibody (19891-1-AP; 1:1000; incubated at room temperature for 1.5 hours) with sh-Control and sh-TRUB2 transfected HeLa cells.



Immunohistochemical analysis of paraffin-embedded human colon cancer tissue slide using 19891-1-AP (TRUB2 antibody) at dilution of 1:2000 (under 10x lens). Heat mediated antigen retrieval with Tris-EDTA buffer (pH 9.0).



Immunohistochemical analysis of paraffin-embedded human colon cancer tissue slide using 19891-1-AP (TRUB2 antibody) at dilution of 1:2000 (under 40x lens). Heat mediated antigen retrieval with Tris-EDTA buffer (pH 9.0).