

For Research Use Only

TOP2A-Specific Polyclonal antibody



Catalog Number: 20233-1-AP

Featured Product

18 Publications

Basic Information

Catalog Number:

20233-1-AP

Size:

150ul, Concentration: 800 µg/ml by Nanodrop;

Source:

Rabbit

Isotype:

IgG

GenBank Accession Number:

NM_001067

GeneID (NCBI):

7153

UNIPROT ID:

P11388

Full Name:

topoisomerase (DNA) II alpha 170kDa

Calculated MW:

174 kDa

Observed MW:

170-177 kDa

Purification Method:

Antigen affinity purification

Recommended Dilutions:

WB 1:2000-1:16000

IP 0.5-4.0 ug for 1.0-3.0 mg of total protein lysate

IHC 1:20-1:200

IF 1:10-1:100

Applications

Tested Applications:

WB, IP, IF, IHC, ELISA

Cited Applications:

WB, IF, IHC

Species Specificity:

human

Cited Species:

human, mouse

Note-IHC: suggested antigen retrieval with TE buffer pH 9.0; (*) Alternatively, antigen retrieval may be performed with citrate buffer pH 6.0

Positive Controls:

WB : HeLa cells, HepG2 cells, L02 cells

IP : HeLa cells,

IHC : human spleen tissue,

IF : HepG2 cells,

Background Information

TOP2A, also named as TOP2, belongs to the type II topoisomerase family. Topoisomerase II makes double-strand breaks. TOP2 control the topological states of DNA by transient breakage and subsequent rejoining of DNA strands. TOP2A may play a role in regulating the period length of ARNTL/BMAL1 transcriptional oscillation. DNA topoisomerase IIa (170 kDa, TOP2a/170) is essential in proliferating cells by resolving DNA topological entanglements during chromosome condensation, replication, and segregation.

Notable Publications

Author	Pubmed ID	Journal	Application
Yi Fang	31662984	Biomed Res Int	WB
Xuefeng Li	25237769	Oncotarget	WB
Carlo Cattrini	33091733	Cancer Treat Res Commun	WB

Storage

Storage:

Store at -20°C. Stable for one year after shipment.

Storage Buffer:

PBS with 0.02% sodium azide and 50% glycerol pH 7.3.

Aliquoting is unnecessary for -20°C storage

*** 20ul sizes contain 0.1% BSA

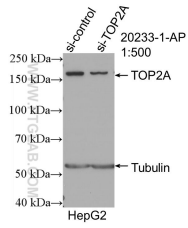
For technical support and original validation data for this product please contact:

T: 1 (888) 4PTGLAB (1-888-478-4522) (toll free in USA), or 1(312) 455-8498 (outside USA)

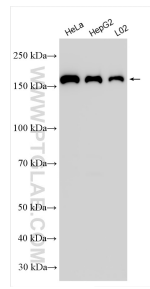
E: proteintech@ptglab.com
W: ptglab.com

This product is exclusively available under Proteintech Group brand and is not available to purchase from any other manufacturer.

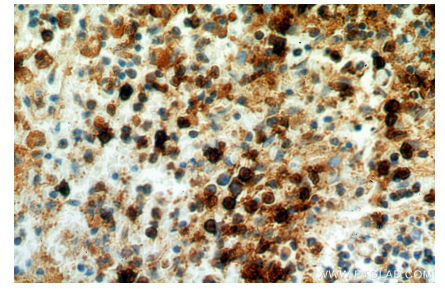
Selected Validation Data



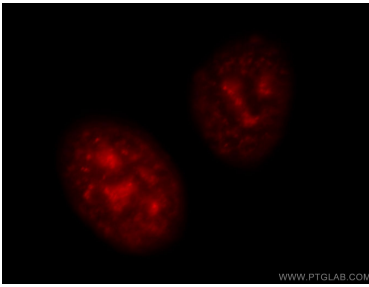
WB result of TOP2A-specific antibody (20233-1-AP; 1:500; incubated at room temperature for 1.5 hours) with sh-Control and sh-TOP2A-Specific transfected HepG2 cells.



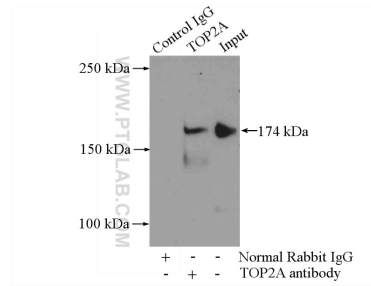
Various lysates were subjected to SDS PAGE followed by western blot with 20233-1-AP (TOP2A-Specific antibody) at dilution of 1:8000 incubated at room temperature for 1.5 hours.



Immunohistochemical analysis of paraffin-embedded human spleen using 20233-1-AP (TOP2A-Specific antibody) at dilution of 1:100 (under 40x lens).



Immunofluorescent analysis of HepG2 cells, using TOP2A antibody 20233-1-AP at 1:25 dilution and Rhodamine-labeled goat anti-rabbit IgG (red).



IP result of anti-TOP2A-Specific (IP:20233-1-AP, 4ug; Detection:20233-1-AP 1:500) with HeLa cells lysate 2000ug.