

For Research Use Only

RAE1 Polyclonal antibody

Catalog Number: 20491-1-AP **3 Publications**



Basic Information

Catalog Number: 20491-1-AP	GenBank Accession Number: BC103754	Purification Method: Antigen affinity purification
Size: 150ul , Concentration: 350 µg/ml by Nanodrop and 273 µg/ml by Bradford method using BSA as the standard;	GeneID (NCBI): 8480	Recommended Dilutions: WB 1:500-1:2000 IHC 1:50-1:500 IF 1:50-1:500
Source: Rabbit	Full Name: RAE1 RNA export 1 homolog (S. pombe)	
Isotype: IgG	Calculated MW: 368 aa, 41 kDa	
Immunogen Catalog Number: AG12102	Observed MW: 41 kDa	

Applications

Tested Applications: IF, IHC, WB, ELISA	Positive Controls: WB : BxPC-3 cells, HEK-293 cells, HepG2 cells IHC : human testis tissue, IF : HepG2 cells,
Cited Applications: IF, IHC, WB	
Species Specificity: human	
Cited Species: human	
Note-IHC: suggested antigen retrieval with TE buffer pH 9.0; (*) Alternatively, antigen retrieval may be performed with citrate buffer pH 6.0	

Background Information

Notable Publications

Author	Pubmed ID	Journal	Application
Tianyu Wu	36395215	Science	IF
Yuta Kobayashi	34008277	Cancer Sci	WB IHC
Li Li	37865085	Dev Cell	

Storage

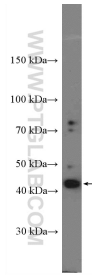
Storage:
Store at -20°C. Stable for one year after shipment.
Storage Buffer:
PBS with 0.02% sodium azide and 50% glycerol pH 7.3.
Aliquoting is unnecessary for -20°C storage

*** 20ul sizes contain 0.1% BSA

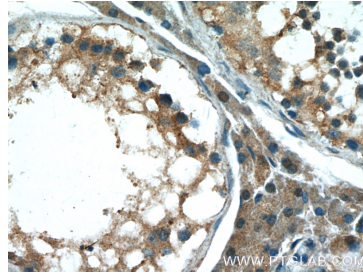
For technical support and original validation data for this product please contact:
T: 1 (888) 4PTGLAB (1-888-478-4522) (toll free in USA), or 1(312) 455-8498 (outside USA)
E: proteintech@ptglab.com
W: ptglab.com

This product is exclusively available under Proteintech Group brand and is not available to purchase from any other manufacturer.

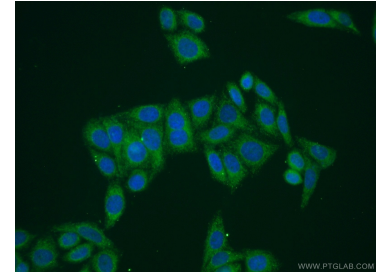
Selected Validation Data



BxPC-3 cells were subjected to SDS PAGE followed by western blot with 20491-1-AP (RAE1 Antibody) at dilution of 1:1000 incubated at room temperature for 1.5 hours.



Immunohistochemical analysis of paraffin-embedded human testis tissue slide using 20491-1-AP (RAE1 Antibody) at dilution of 1:200 (under 40x lens).



Immunofluorescent analysis of (-20°C Ethanol) fixed HepG2 cells using 20491-1-AP (RAE1 antibody) at dilution of 1:50 and Alexa Fluor 488-conjugated AffiniPure Goat Anti-Rabbit IgG(H+L).