

For Research Use Only

SOX1 Polyclonal antibody

Catalog Number: 20744-1-AP **1 Publications**



Basic Information

Catalog Number: 20744-1-AP	GenBank Accession Number: NM_005986	Purification Method: Antigen affinity purification
Size: 150ul , Concentration: 400 µg/ml by Nanodrop and 327 µg/ml by Bradford method using BSA as the standard;	GeneID (NCBI): 6656	Recommended Dilutions: WB 1:200-1:1000
Source: Rabbit	Full Name: SRY (sex determining region Y)-box 1	
Isotype: IgG	Calculated MW: 39 kDa	
	Observed MW: 45-50 kDa	

Applications

Tested Applications: WB, ELISA	Positive Controls: WB : NCCIT cell,
Cited Applications: WB	
Species Specificity: human	
Cited Species: human	

Background Information

Sox genes comprise a family of genes that are related to the mammalian sex determining gene SRY. These genes similarly contain sequences that encode for the HMG-box domain, which is responsible for the sequence-specific DNA-binding activity. Sox genes encode putative transcriptional regulators implicated in the decision of cell fates during development and the control of diverse developmental processes. SOX1 may function as a switch in neuronal development and keeps neural cells undifferentiated by counteracting the activity of proneural proteins and suppresses neuronal differentiation.

Notable Publications

Author	Pubmed ID	Journal	Application
Chaoshuai Zhao	32918341	J Cell Mol Med	WB

Storage

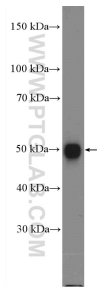
Storage:
Store at -20°C. Stable for one year after shipment.
Storage Buffer:
PBS with 0.02% sodium azide and 50% glycerol pH 7.3.
Aliquoting is unnecessary for -20°C storage

***** 20ul sizes contain 0.1% BSA**

For technical support and original validation data for this product please contact:
T: 1 (888) 4PTGLAB (1-888-478-4522) (toll free in USA), or 1(312) 455-8498 (outside USA) E: proteintech@ptglab.com W: ptglab.com

This product is exclusively available under Proteintech Group brand and is not available to purchase from any other manufacturer.

Selected Validation Data



NCCIT cell were subjected to SDS PAGE followed by western blot with 20744-1-AP (SOX1 Antibody) at dilution of 1:100 incubated at room temperature for 1.5 hours.