

For Research Use Only

CHCHD4 Polyclonal antibody

Catalog Number: 21090-1-AP

Featured Product

25 Publications



Basic Information

Catalog Number: 21090-1-AP	GenBank Accession Number: BC033775	Purification Method: Antigen affinity purification
Size: 150ul, Concentration: 650 µg/ml by Nanodrop and 267 µg/ml by Bradford method using BSA as the standard;	GeneID (NCBI): 131474	Recommended Dilutions: WB 1:1000-1:4000 IP 0.5-4.0 ug for IP and 1:500-1:2000 for WB
Source: Rabbit	Full Name: coiled-coil-helix-coiled-coil-helix domain containing 4	IHC 1:50-1:500 IF 1:50-1:500
Isotype: IgG	Calculated MW: 142 aa, 16 kDa	
Immunogen Catalog Number: AG15339	Observed MW: 22 kDa	

Applications

Tested Applications:
IF, IHC, IP, WB, ELISA

Cited Applications:
CoIP, IF, IHC, IP, WB

Species Specificity:
human, mouse, rat

Cited Species:
human, rat, mouse

Note-IHC: suggested antigen retrieval with TE buffer pH 9.0; (*) Alternatively, antigen retrieval may be performed with citrate buffer pH 6.0

Positive Controls:

WB: Daudi cells, human heart tissue, mouse lung tissue, mouse spleen tissue, LO2 cells, mouse kidney tissue, Ramos cells, Raji cells, rat brain tissue, mouse brain tissue

IP: mouse brain tissue,

IHC: mouse testis tissue, human kidney tissue

IF: A431 cells,

Background Information

CHCHD4, a component of human mitochondria, belongs to a protein family. It functions as chaperone and catalyzes the formation of disulfide bonds in substrate proteins, such as COX17. It is required for the import and folding of small cysteine-containing proteins (small Tim) in the mitochondrial intermembrane space (IMS).

Notable Publications

Author	Pubmed ID	Journal	Application
Kenza Nedara	36387192	Front Oncol	WB
Siddhesh Aras	25315652	Mitochondrion	WB
Tibor Balogh	26584568	Pathol Oncol Res	WB

Storage

Storage:

Store at -20°C. Stable for one year after shipment.

Storage Buffer:

PBS with 0.02% sodium azide and 50% glycerol pH 7.3.

Aliquoting is unnecessary for -20°C storage

*** 20ul sizes contain 0.1% BSA

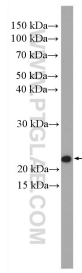
For technical support and original validation data for this product please contact:

T: 1 (888) 4PTGLAB (1-888-478-4522) (toll free in USA), or 1(312) 455-8498 (outside USA)

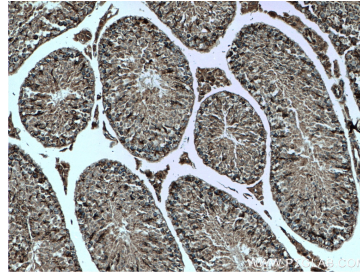
E: proteintech@ptglab.com
W: ptglab.com

This product is exclusively available under Proteintech Group brand and is not available to purchase from any other manufacturer.

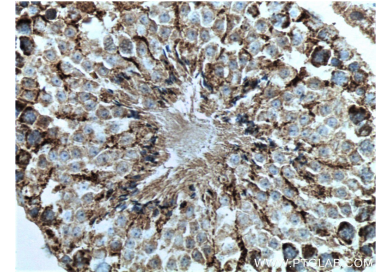
Selected Validation Data



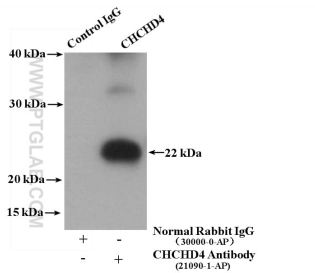
Daudi cells were subjected to SDS PAGE followed by western blot with 21090-1-AP (CHCHD4 antibody) at dilution of 1:2000 incubated at room temperature for 1.5 hours.



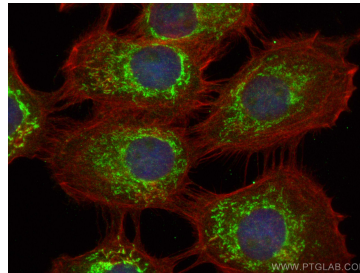
Immunohistochemical analysis of paraffin-embedded mouse testis tissue slide using 21090-1-AP (CHCHD4 antibody) at dilution of 1:200 (under 10x lens. Heat mediated antigen retrieval with Tris-EDTA buffer (pH 9.0).



Immunohistochemical analysis of paraffin-embedded mouse testis tissue slide using 21090-1-AP (CHCHD4 antibody) at dilution of 1:200 (under 40x lens. Heat mediated antigen retrieval with Tris-EDTA buffer (pH 9.0).



IP result of anti-CHCHD4 (IP:21090-1-AP, 4ug; Detection:21090-1-AP 1:1000) with mouse brain tissue lysate 3200 ug.



Immunofluorescent analysis of (4% PFA) fixed A431 cells using CHCHD4 antibody (21090-1-AP) at dilution of 1:200 and CoraLite@488-Conjugated AffiniPure Goat Anti-Rabbit IgG(H+L), CL594-Phalloidin (red).