

For Research Use Only

# SASS6 Polyclonal antibody

Catalog Number: 21377-1-AP **4 Publications**



## Basic Information

<b>Catalog Number:</b> 21377-1-AP	<b>GenBank Accession Number:</b> BC101026	<b>Purification Method:</b> Antigen affinity purification
<b>Size:</b> 150ul , Concentration: 750 µg/ml by Nanodrop and 420 µg/ml by Bradford method using BSA as the standard;	<b>GeneID (NCBI):</b> 163786	<b>Recommended Dilutions:</b> WB 1:500-1:2000 IP 0.5-4.0 ug for 1.0-3.0 mg of total protein lysate IHC 1:20-1:200
<b>Source:</b> Rabbit	<b>Full Name:</b> spindle assembly 6 homolog (C. elegans)	
<b>Isotype:</b> IgG	<b>Calculated MW:</b> 657 aa, 74 kDa	
<b>Immunogen Catalog Number:</b> AG15917	<b>Observed MW:</b> 70-74 kDa	

## Applications

<b>Tested Applications:</b> IHC, IP, WB, ELISA	<b>Positive Controls:</b> WB : HeLa cells, human testis tissue, MCF-7 cells IP : HeLa cells, IHC : human testis tissue, human kidney tissue
<b>Cited Applications:</b> IF, IHC, WB	
<b>Species Specificity:</b> human	
<b>Cited Species:</b> human	
<b>Note-IHC: suggested antigen retrieval with TE buffer pH 9.0; (*) Alternatively, antigen retrieval may be performed with citrate buffer pH 6.0</b>	

## Background Information

### Notable Publications

Author	Pubmed ID	Journal	Application
Tianyu Wu	36395215	Science	IF
Hindol Gupta	32442461	Curr Biol	WB
Lili Du	33907854	Oncol Rep	WB, IHC

## Storage

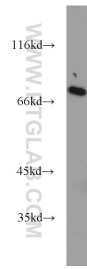
**Storage:**  
Store at -20°C. Stable for one year after shipment.  
**Storage Buffer:**  
PBS with 0.02% sodium azide and 50% glycerol pH 7.3.  
Aliquoting is unnecessary for -20°C storage

\*\*\* 20ul sizes contain 0.1% BSA

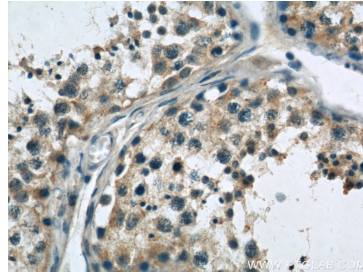
For technical support and original validation data for this product please contact:  
T: 1 (888) 4PTGLAB (1-888-478-4522) (toll free in USA), or 1(312) 455-8498 (outside USA)  
E: proteintech@ptglab.com  
W: ptglab.com

This product is exclusively available under Proteintech Group brand and is not available to purchase from any other manufacturer.

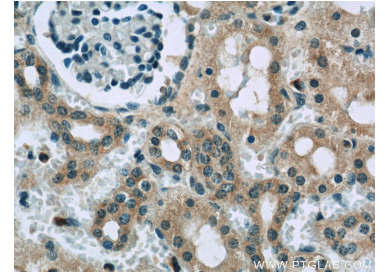
## Selected Validation Data



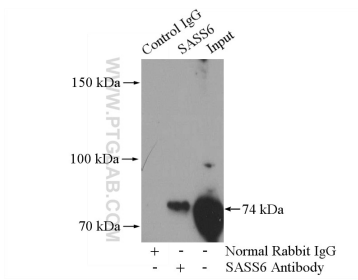
HeLa cells were subjected to SDS PAGE followed by western blot with 21377-1-AP (SASS6 antibody) at dilution of 1:1000 incubated at room temperature for 1.5 hours.



Immunohistochemical analysis of paraffin-embedded human testis slide using 21377-1-AP (SASS6 Antibody) at dilution of 1:50.



Immunohistochemical analysis of paraffin-embedded human kidney slide using 21377-1-AP (SASS6 Antibody) at dilution of 1:50.



IP Result of anti-SASS6 (IP:21377-1-AP, 4ug; Detection:21377-1-AP 1:1000) with HeLa cells lysate 600ug.