

For Research Use Only

# SLC24A6 Polyclonal antibody

Catalog Number: 21430-1-AP

Featured Product

8 Publications



## Basic Information

<b>Catalog Number:</b> 21430-1-AP	<b>GenBank Accession Number:</b> BC098360	<b>Purification Method:</b> Antigen affinity purification
<b>Size:</b> 150ul, Concentration: 800 µg/ml by Nanodrop;	<b>GeneID (NCBI):</b> 80024	<b>Recommended Dilutions:</b> WB 1:500-1:2000 IHC 1:50-1:500
<b>Source:</b> Rabbit	<b>Full Name:</b> solute carrier family 24 (sodium/potassium/calcium exchanger), member 6	
<b>Isotype:</b> IgG	<b>Calculated MW:</b> 584 aa, 64 kDa	
<b>Immunogen Catalog Number:</b> AG16034	<b>Observed MW:</b> 64 kDa	

## Applications

<b>Tested Applications:</b> IHC, WB, ELISA	<b>Positive Controls:</b>
<b>Cited Applications:</b> IF, IHC, WB	<b>WB:</b> mouse brain tissue, rat brain tissue
<b>Species Specificity:</b> human, mouse, rat	<b>IHC:</b> mouse brain tissue, mouse heart tissue
<b>Cited Species:</b> human, rat, mouse	
<b>Note-IHC: suggested antigen retrieval with TE buffer pH 9.0; (*) Alternatively, antigen retrieval may be performed with citrate buffer pH 6.0</b>	

## Background Information

SLC24A6, also named as NCLX, is a kind of mitochondrial sodium/calcium antiporter that mediates sodium-dependent calcium efflux from mitochondrion by mediating the exchange of 3 sodium ions per 1 calcium ion. It has been reported that SLC24A6 plays a key role in attenuating potential ROS production and injury upon cardiac reperfusion. SLC24A6 is associated with mitochondrial calcium homeostasis by mediating mitochondrial calcium extrusion. (PMID: 32728214, 20018762, 28219928)

## Notable Publications

Author	Pubmed ID	Journal	Application
Yuan Zu	26089852	J Geriatr Cardiol	WB, IF
Vidhya Tangeda	35296653	Cell Death Dis	IHC, IF
Xin-Yu Miao	35107747	Cell Biochem Biophys	WB, IF

## Storage

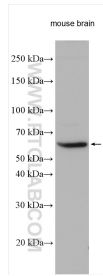
**Storage:**  
Store at -20°C. Stable for one year after shipment.  
**Storage Buffer:**  
PBS with 0.02% sodium azide and 50% glycerol pH 7.3.  
Aliquoting is unnecessary for -20°C storage

\*\*\* 20ul sizes contain 0.1% BSA

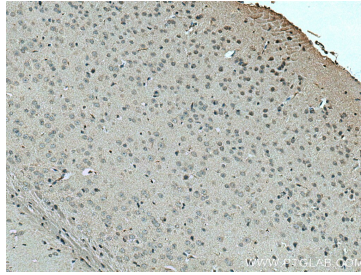
For technical support and original validation data for this product please contact:  
T: 1 (888) 4PTGLAB (1-888-478-4522) (toll free in USA), or 1(312) 455-8498 (outside USA)  
E: proteintech@ptglab.com  
W: ptglab.com

This product is exclusively available under Proteintech Group brand and is not available to purchase from any other manufacturer.

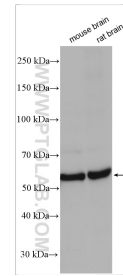
## Selected Validation Data



Mouse brain tissue were subjected to SDS PAGE followed by western blot with 21430-1-AP (SLC24A6 antibody) at dilution of 1:1000 incubated at room temperature for 1.5 hours.



Immunohistochemical analysis of paraffin-embedded mouse brain tissue slide using 21430-1-AP (SLC24A6 antibody) at dilution of 1:200 (under 10x lens). Heat mediated antigen retrieval with Tris-EDTA buffer (pH 9.0).



Various lysates were subjected to SDS PAGE followed by western blot with 21430-1-AP (SLC24A6 antibody) at dilution of 1:3000 incubated at room temperature for 1.5 hours.