

For Research Use Only

# ALCAM Polyclonal antibody

Catalog Number: 21972-1-AP **4 Publications**



## Basic Information

<b>Catalog Number:</b> 21972-1-AP	<b>GenBank Accession Number:</b> BC137097	<b>Purification Method:</b> Antigen affinity purification
<b>Size:</b> 150ul , Concentration: 260 µg/ml by Nanodrop and 200 µg/ml by Bradford method using BSA as the standard;	<b>GeneID (NCBI):</b> 214	<b>Recommended Dilutions:</b> WB 1:2000-1:12000 IHC 1:20-1:200
<b>Source:</b> Rabbit	<b>Full Name:</b> activated leukocyte cell adhesion molecule	
<b>Isotype:</b> IgG	<b>Calculated MW:</b> 583 aa, 65 kDa	
<b>Immunogen Catalog Number:</b> AG16892	<b>Observed MW:</b> 100-110 kDa	

## Applications

### Tested Applications:

IHC, WB, ELISA

### Cited Applications:

IF, IHC, WB

### Species Specificity:

human, mouse

### Cited Species:

human

**Note-IHC: suggested antigen retrieval with TE buffer pH 9.0; (\*) Alternatively, antigen retrieval may be performed with citrate buffer pH 6.0**

### Positive Controls:

**WB:** A549 cells, human liver tissue, mouse brain tissue, U2OS cells

**IHC:** human breast cancer tissue, human colon cancer tissue, mouse brain tissue

## Background Information

Activated leukocyte cell adhesion molecule (ALCAM, also known as CD166) is a cell adhesion molecule that belongs to the immunoglobulin superfamily. It is involved in cell-cell adhesion through homophilic and heterophilic (to CD6) interactions. ALCAM is widely expressed in a variety of normal tissues. Altered ALCAM expression has been associated with the differentiation state and progression in some neoplasms including melanoma, prostate, colorectal, and breast cancers (PMID: 20461761; 18172759).

## Notable Publications

Author	Pubmed ID	Journal	Application
Dong-Ming Wu	32440144	Onco Targets Ther	WB,IF
Xiang Hu	32512510	EBioMedicine	IHC
Dong-Ming Wu	31024010	Cell Death Dis	WB,IHC

## Storage

### Storage:

Store at -20°C. Stable for one year after shipment.

### Storage Buffer:

PBS with 0.02% sodium azide and 50% glycerol pH 7.3.

Aliquoting is unnecessary for -20°C storage

**\*\*\* 20ul sizes contain 0.1% BSA**

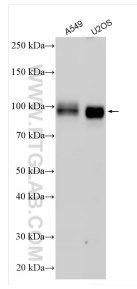
For technical support and original validation data for this product please contact:

T: 1 (888) 4PTGLAB (1-888-478-4522) (toll free in USA), or 1(312) 455-8498 (outside USA)

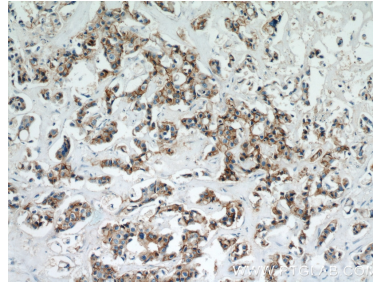
E: proteintech@ptglab.com  
W: ptglab.com

**This product is exclusively available under Proteintech Group brand and is not available to purchase from any other manufacturer.**

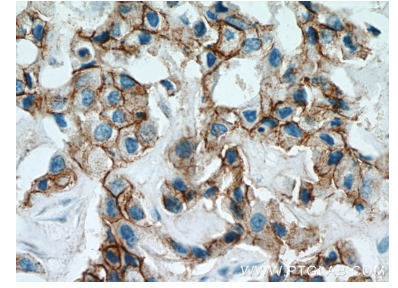
## Selected Validation Data



Various lysates were subjected to SDS PAGE followed by western blot with 21972-1-AP (ALCAM antibody) at dilution of 1:6000 incubated at room temperature for 1.5 hours.



Immunohistochemical analysis of paraffin-embedded human breast cancer using 21972-1-AP (ALCAM antibody) at dilution of 1:50 (under 10x lens).



Immunohistochemical analysis of paraffin-embedded human breast cancer using 21972-1-AP (ALCAM antibody) at dilution of 1:50 (under 40x lens).