

For Research Use Only

# RRBP1 Polyclonal antibody

Catalog Number: 22015-1-AP

Featured Product

6 Publications



## Basic Information

<b>Catalog Number:</b> 22015-1-AP	<b>GenBank Accession Number:</b> BC128577	<b>Purification Method:</b> Antigen affinity purification
<b>Size:</b> 150ul, Concentration: 1000 µg/ml by Nanodrop;	<b>GeneID (NCBI):</b> 6238	<b>Recommended Dilutions:</b> WB 1:2000-1:12000 IHC 1:2000-1:8000 IF 1:50-1:500
<b>Source:</b> Rabbit	<b>Full Name:</b> ribosome binding protein 1 homolog 180kDa (dog)	
<b>Isotype:</b> IgG	<b>Calculated MW:</b> 1410 aa, 152 kDa	
<b>Immunogen Catalog Number:</b> AG16648	<b>Observed MW:</b> 180 kDa	

## Applications

**Tested Applications:**  
FC, IF, IHC, WB, ELISA

**Cited Applications:**  
IF, IHC, IP, WB

**Species Specificity:**  
human, mouse

**Cited Species:**  
human

**Note-IHC: suggested antigen retrieval with TE buffer pH 9.0; (\*) Alternatively, antigen retrieval may be performed with citrate buffer pH 6.0**

**Positive Controls:**

**WB:** HeLa cells, mouse pancreas tissue, HepG2 cells

**IHC:** human lung cancer tissue, human pancreas tissue

**IF:** NIH/3T3 cells, HepG2 cells

## Background Information

Ribosome-binding protein 1 (RRBP1) is an endoplasmic reticulum membrane protein. It is a 1410 amino acid protein composed of a hydrophobic NH<sub>2</sub>-terminus that includes a transmembrane domain, a highly conserved tandem repeat (ribosome-binding domain), and an acidic coiled-coil COOH-terminal domain. RRBP1 acts as a ribosome receptor and mediates interaction between the ribosome and the endoplasmic reticulum membrane. It is also involved in early cardiac morphogenesis (PMID: 22709790; 8812507; 7686155). RRBP1 has two different isoforms with molecular weights of 150 kDa and 109 kDa.

## Notable Publications

Author	Pubmed ID	Journal	Application
Wenqing Wang	34618999	Mol Oncol	WB,IF,IP
Yuan Wang	32524001	Sci Adv	IF
Wonyul Jang	36520888	Science	WB

## Storage

**Storage:**

Store at -20°C. Stable for one year after shipment.

**Storage Buffer:**

PBS with 0.02% sodium azide and 50% glycerol pH 7.3.

Aliquoting is unnecessary for -20°C storage

\*\*\* 20ul sizes contain 0.1% BSA

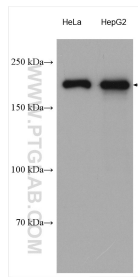
For technical support and original validation data for this product please contact:

T: 1 (888) 4PTGLAB (1-888-478-4522) (toll free in USA), or 1(312) 455-8498 (outside USA)

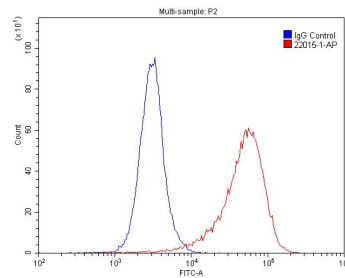
E: proteintech@ptglab.com  
W: ptglab.com

This product is exclusively available under Proteintech Group brand and is not available to purchase from any other manufacturer.

## Selected Validation Data



Various lysates were subjected to SDS PAGE followed by western blot with 22015-1-AP (RRBP1 antibody) at dilution of 1:6000 incubated at room temperature for 1.5 hours.



$1 \times 10^6$  BxPC-3 cells were stained with 0.2ug RRBP1 antibody (22015-1-AP, red) and control antibody (blue). Alexa Fluor 488-conjugated AffiniPure Goat Anti-Rabbit IgG(H+L) with dilution 1:1500. Cells were fixed with 4% PFA and permeabilized with 0.1% Triton X-100.

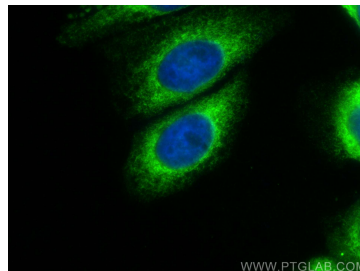
Immunohistochemical analysis of paraffin-embedded human lung cancer tissue slide using 22015-1-AP (RRBP1 antibody) at dilution of 1:4000 (under 10x lens). Heat mediated antigen retrieval with Tris-EDTA buffer (pH 9.0).

Immunohistochemical analysis of paraffin-embedded human lung cancer tissue slide using 22015-1-AP (RRBP1 antibody) at dilution of 1:4000 (under 40x lens). Heat mediated antigen retrieval with Tris-EDTA buffer (pH 9.0).

Immunohistochemical analysis of paraffin-embedded human lung cancer tissue slide using 22015-1-AP (RRBP1 antibody) at dilution of 1:4000 (under 40x lens). Heat mediated antigen retrieval with Tris-EDTA buffer (pH 9.0).

Immunofluorescent analysis of (-20°C Ethanol) fixed NIH/3T3 cells using RRBP1 antibody (22015-1-AP) at dilution of 1:200 and CoraLite@488-Conjugated AffiniPure Goat Anti-Rabbit IgG(H+L).

Immunofluorescent analysis of (-20°C Ethanol) fixed NIH/3T3 cells using RRBP1 antibody (22015-1-AP) at dilution of 1:200 and CoraLite@488-Conjugated AffiniPure Goat Anti-Rabbit IgG(H+L).



Immunofluorescent analysis of (4% PFA) fixed HepG2 cells using RRBP1 antibody (22015-1-AP) at dilution of 1:200 and CoraLite@488-Conjugated AffiniPure Goat Anti-Rabbit IgG(H+L).

Immunofluorescent analysis of (4% PFA) fixed HepG2 cells using RRBP1 antibody (22015-1-AP) at dilution of 1:200 and CoraLite@488-Conjugated AffiniPure Goat Anti-Rabbit IgG(H+L), CL594-phalloidin (red).