

For Research Use Only

LY6E Polyclonal antibody

Catalog Number: 22144-1-AP

Featured Product

4 Publications



Basic Information

Catalog Number: 22144-1-AP	GenBank Accession Number: BC119708	Purification Method: Antigen affinity purification
Size: 150ul, Concentration: 450 µg/ml by Nanodrop;	GeneID (NCBI): 4061	Recommended Dilutions: WB 1:200-1:1000 IHC 1:20-1:200
Source: Rabbit	Full Name: lymphocyte antigen 6 complex, locus E	
Isotype: IgG	Calculated MW: 131 aa, 14 kDa	
Immunogen Catalog Number: AG17573	Observed MW: 12-16 kDa	

Applications

Tested Applications: IHC, WB, ELISA	Positive Controls:
Cited Applications: IF, IHC, WB	WB: mouse kidney tissue,
Species Specificity: human, Mouse	IHC: human tonsillitis tissue, human liver cancer tissue
Cited Species: human	
Note-IHC: suggested antigen retrieval with TE buffer pH 9.0; (*) Alternatively, antigen retrieval may be performed with citrate buffer pH 6.0	

Background Information

The predicted MW of LY6E is 13 kDa. Catalog#22144-1-AP recognises two band of 13 kDa and 18 kDa, and the additional 18 kDa band may be due to glycosylation.

Notable Publications

Author	Pubmed ID	Journal	Application
Dan Liu	36165190	Lab Chip	WB,IF
Xuesen Zhao	32641482	J Virol	WB
Qian Zhang	34994389	Carcinogenesis	WB,IHC

Storage

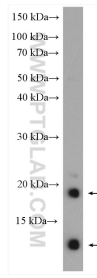
Storage:
Store at -20°C. Stable for one year after shipment.
Storage Buffer:
PBS with 0.02% sodium azide and 50% glycerol pH 7.3.
Aliquoting is unnecessary for -20°C storage

*** 20ul sizes contain 0.1% BSA

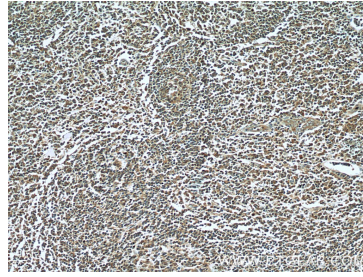
For technical support and original validation data for this product please contact:
T: 1 (888) 4PTGLAB (1-888-478-4522) (toll free in USA), or 1(312) 455-8498 (outside USA)
E: proteintech@ptglab.com
W: ptglab.com

This product is exclusively available under Proteintech Group brand and is not available to purchase from any other manufacturer.

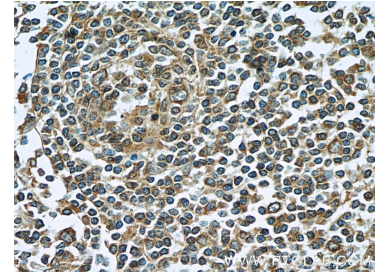
Selected Validation Data



mouse kidney tissue were subjected to SDS PAGE followed by western blot with 22144-1-AP (LY6E antibody) at dilution of 1:300 incubated at room temperature for 1.5 hours.



Immunohistochemical analysis of paraffin-embedded human tonsillitis tissue slide using 22144-1-AP (LY6E Antibody) at dilution of 1:50 (under 10x lens).



Immunohistochemical analysis of paraffin-embedded human tonsillitis tissue slide using 22144-1-AP (LY6E Antibody) at dilution of 1:50 (under 40x lens).