

For Research Use Only

CEP164 Polyclonal antibody

Catalog Number: 22227-1-AP **54 Publications**



Basic Information

Catalog Number: 22227-1-AP	GenBank Accession Number: BC000602	Purification Method: Antigen affinity purification
Size: 150ul, Concentration: 900 µg/ml by Nanodrop and 293 µg/ml by Bradford method using BSA as the standard;	GeneID (NCBI): 22897	Recommended Dilutions: WB 1:200-1:1000 IP 0.5-4.0 ug for 1.0-3.0 mg of total protein lysate IHC 1:20-1:200 IF 1:200-1:800
Source: Rabbit	UNIPROT ID: Q9UPV0	
Isotype: IgG	Full Name: centrosomal protein 164kDa	
Immunogen Catalog Number: AG17570	Calculated MW: 1460 aa, 164 kDa	
	Observed MW: 164 kDa	

Applications

Tested Applications: WB, IP, IF, IHC, ELISA	Positive Controls: WB : HEK-293 cells, IP : RPE1 cells, IHC : human colon tissue, human cervical cancer tissue IF : HeLa cells, A549 cells, PC-3 cells, MDCK cells, hTERT-RPE1 cells
Cited Applications: WB, IP, IF, IHC	
Species Specificity: human, Canine	
Cited Species: human, mouse	

Note-IHC: suggested antigen retrieval with TE buffer pH 9.0; (*) Alternatively, antigen retrieval may be performed with citrate buffer pH 6.0

Background Information

CEP164, also named as KIAA1052 or NPHP15, is a 1460 amino acid protein, which contains 1 WW domain. CEP164 localizes in the microtubule organizing center and is expressed in several cell lines. CEP164 plays a role in microtubule organization and/or maintenance for the formation of primary cilia, a microtubule-based structure that protrudes from the surface of epithelial cells. CEP164 plays a critical role in G2/M checkpoint and nuclear divisions. The expression of CEP164 is normally limited to the mother centriole, and CEP164 can be used as a useful marker for mother centriole.

Notable Publications

Author	Pubmed ID	Journal	Application
Ana Martin-Hurtado	31554934	Sci Rep	IF
Marine H Laporte	36125182	EMBO J	IF
Louise A Stephen	26386247	Elife	IF

Storage

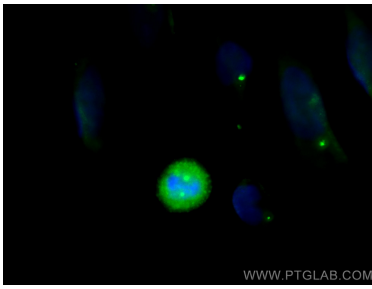
Storage:
Store at -20°C. Stable for one year after shipment.
Storage Buffer:
PBS with 0.02% sodium azide and 50% glycerol pH 7.3.
Aliquoting is unnecessary for -20°C storage

*** 20ul sizes contain 0.1% BSA

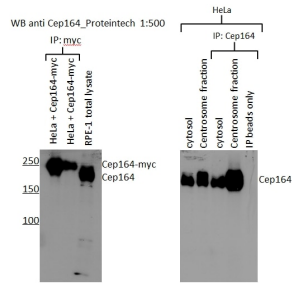
For technical support and original validation data for this product please contact:
T: 1 (888) 4PTGLAB (1-888-478-4522) (toll free in USA), or 1(312) 455-8498 (outside USA) E: proteintech@ptglab.com W: ptglab.com

This product is exclusively available under Proteintech Group brand and is not available to purchase from any other manufacturer.

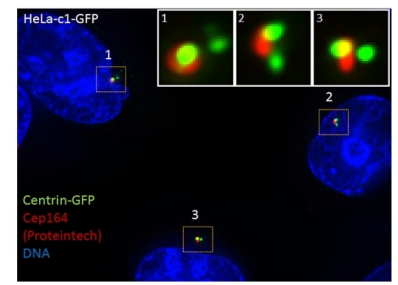
Selected Validation Data



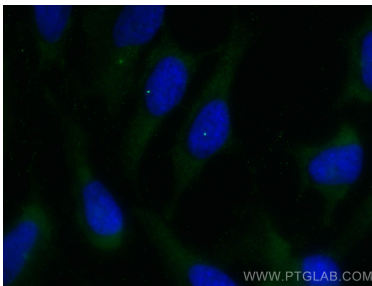
Immunofluorescent analysis of (-20°C Methanol) fixed HeLa cells using CEP164 antibody (22227-1-AP) at dilution of 1:400 and CoraLite®488-Conjugated AffiniPure Goat Anti-Rabbit IgG(H+L).



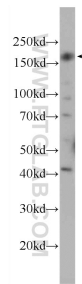
WB results of CEP164 (22227-1-AP, 1:500) with RPE1 cells by Laboratory of Protein Dynamics and Signaling; Center for Cancer Research, National Cancer Institute.



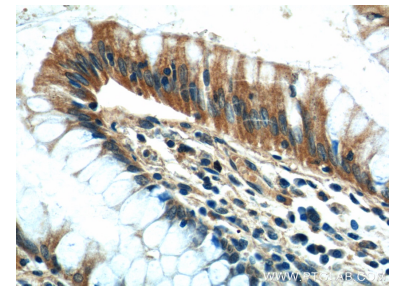
IF results of CEP164 (22227-1-AP, 1:1000) with HeLa cells (1.5% formaldehyde, 10 min RT) by Laboratory of Protein Dynamics and Signaling; Center for Cancer Research, National Cancer Institute.



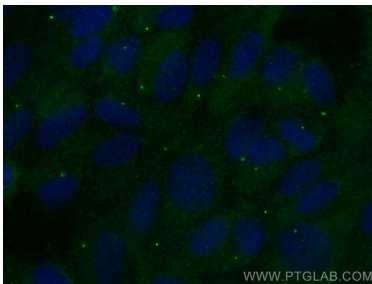
Immunofluorescent analysis of (-20°C Methanol) fixed HeLa cells using CEP164 antibody (22227-1-AP) at dilution of 1:200 and CoraLite®488-Conjugated AffiniPure Goat Anti-Rabbit IgG(H+L).



HEK-293 cells were subjected to SDS PAGE followed by western blot with 22227-1-AP (CEP164 Antibody) at dilution of 1:300 incubated at room temperature for 1.5 hours.



Immunohistochemical analysis of paraffin-embedded human colon tissue slide using 22227-1-AP (CEP164 Antibody) at dilution of 1:50 (under 40x lens).



Immunofluorescent analysis of (-20°C Ethanol) fixed hTERT-RPE1 cells using CEP164 antibody (22227-1-AP) at dilution of 1:200 and CoraLite®488-Conjugated AffiniPure Goat Anti-Rabbit IgG(H+L).