

For Research Use Only

RBM15B Polyclonal antibody

Catalog Number: 22249-1-AP

Featured Product

11 Publications



Basic Information

Catalog Number:
22249-1-AP

Size:
150ul, Concentration: 900 µg/ml by Nanodrop and 267 µg/ml by Bradford method using BSA as the standard;

Source:
Rabbit

Isotype:
IgG

Immunogen Catalog Number:
AG17744

GenBank Accession Number:
BC001367

GeneID (NCBI):
29890

Full Name:
RNA binding motif protein 15B

Calculated MW:
890 aa, 97 kDa

Observed MW:
100-120 kDa, 70 kDa

Purification Method:
Antigen affinity purification

Recommended Dilutions:
WB 1:500-1:3000
IP 0.5-4.0 ug for 1.0-3.0 mg of total protein lysate

Applications

Tested Applications:
IP, WB, ELISA

Cited Applications:
CoIP, IHC, RIP, WB

Species Specificity:
human, mouse, rat

Cited Species:
human, mouse

Positive Controls:

WB: HeLa cells, HEK-293 cells, mouse brain tissue

IP: HeLa cells,

Background Information

RBM15B, one members of the SPEN (Split-end) family of proteins, have repressor function in several signaling pathways and may bind to RNA through interaction with spliceosome components. Present polyclonal anti-RBM15B antibody was produced by immunizing animals with C-terminus of RBM15B, which homolog with a short form of RBM15B(563aa, ~70kDa), thus this antibody can recognize full length of RBM15B(~100kDa) and splice-one(70kDa)

Notable Publications

Author	Pubmed ID	Journal	Application
He Huang	32847866	eNeuro	WB
Elodie Villa	33756106	Mol Cell	WB
Wenqi Xu	33505026	Nature	WB

Storage

Storage:

Store at -20°C. Stable for one year after shipment.

Storage Buffer:

PBS with 0.02% sodium azide and 50% glycerol pH 7.3.

Aliquoting is unnecessary for -20°C storage

*** 20ul sizes contain 0.1% BSA

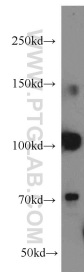
For technical support and original validation data for this product please contact:

T: 1 (888) 4PTGLAB (1-888-478-4522) (toll free in USA), or 1(312) 455-8498 (outside USA)

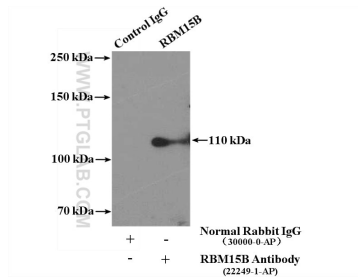
E: proteintech@ptglab.com
W: ptglab.com

This product is exclusively available under Proteintech Group brand and is not available to purchase from any other manufacturer.

Selected Validation Data



HeLa cells were subjected to SDS PAGE followed by western blot with 22249-1-AP (RBM15B antibody) at dilution of 1:2000 incubated at room temperature for 1.5 hours.



IP Result of anti-RBM15B (IP:22249-1-AP, 4ug; Detection:22249-1-AP 1:500) with HeLa cells lysate 2500ug.