

For Research Use Only

# SAR1A Polyclonal antibody

Catalog Number: 22291-1-AP

Featured Product

4 Publications



## Basic Information

<b>Catalog Number:</b> 22291-1-AP	<b>GenBank Accession Number:</b> NM_020150	<b>Purification Method:</b> Antigen affinity purification
<b>Size:</b> 150ul , Concentration: 550 µg/ml by Nanodrop;	<b>GeneID (NCBI):</b> 56681	<b>Recommended Dilutions:</b> WB 1:500-1:2000 IHC 1:50-1:500 IF 1:200-1:800
<b>Source:</b> Rabbit	<b>UNIPROT ID:</b> Q9NR31	
<b>Isotype:</b> IgG	<b>Full Name:</b> SAR1 homolog A (S. cerevisiae)	
	<b>Calculated MW:</b> 22 kDa	
	<b>Observed MW:</b> 23-25 kDa	

## Applications

### Tested Applications:

WB, IF, IHC, ELISA

### Cited Applications:

WB, ColP

### Species Specificity:

human, mouse, rat

### Cited Species:

human, rat

**Note-IHC: suggested antigen retrieval with TE buffer pH 9.0; (\*) Alternatively, antigen retrieval may be performed with citrate buffer pH 6.0**

### Positive Controls:

**WB:** A431 cells, HT-1080 cells, HepG2 cells, mouse kidney tissue, HEK-293T cells, HeLa cells

**IHC:** mouse skeletal muscle tissue, human skeletal muscle tissue

**IF:** HepG2 cells, A431 cells

## Background Information

SAR1A, also named as SAR1, SARA and SARA1, belongs to the small GTPase superfamily and SAR1 family. It is involved in transport from the endoplasmic reticulum to the Golgi apparatus. SAR1A is required to maintain SEC16A localization at discrete locations on the ER membrane perhaps by preventing its dissociation. SAR1A-GTP-dependent assembly of SEC16A on the ER membrane forms an organized scaffold defining endoplasmic reticulum exit sites (ERES). The antibody is specific to SAR1A.

## Notable Publications

Author	Pubmed ID	Journal	Application
Hongxia Li	34558311	Epigenomics	WB
Jiaxin Sun	28515233	J Cell Sci	ColP
Jie Chen	34290409	Nature	WB

## Storage

### Storage:

Store at -20°C. Stable for one year after shipment.

### Storage Buffer:

PBS with 0.02% sodium azide and 50% glycerol pH 7.3.

Aliquoting is unnecessary for -20°C storage

\*\*\* 20ul sizes contain 0.1% BSA

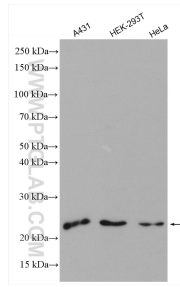
For technical support and original validation data for this product please contact:

T: 1 (888) 4PTGLAB (1-888-478-4522) (toll free in USA), or 1(312) 455-8498 (outside USA)

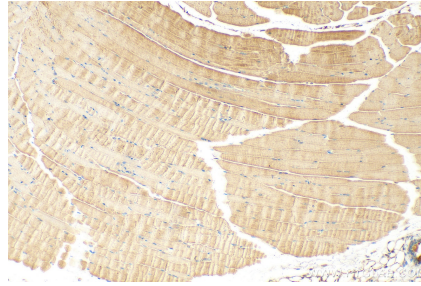
E: proteintech@ptglab.com  
W: ptglab.com

This product is exclusively available under Proteintech Group brand and is not available to purchase from any other manufacturer.

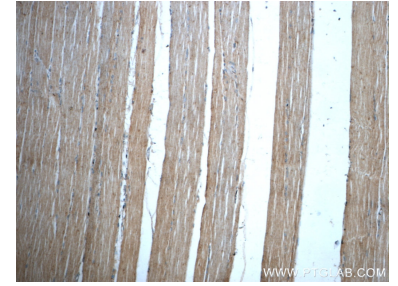
## Selected Validation Data



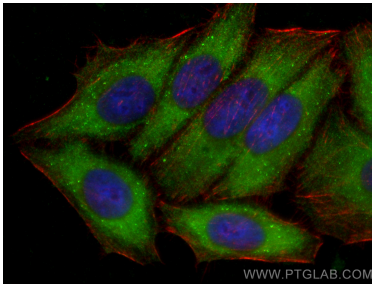
Various lysates were subjected to SDS PAGE followed by western blot with 22291-1-AP (SAR1A antibody) at dilution of 1:1000 incubated at room temperature for 1.5 hours.



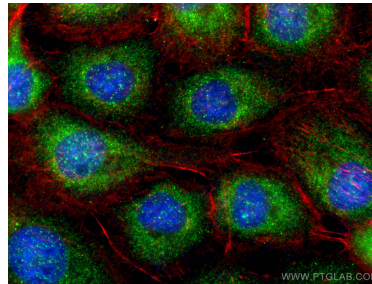
Immunohistochemical analysis of paraffin-embedded mouse skeletal muscle tissue slide using 22291-1-AP (SAR1A antibody) at dilution of 1:200 (under 10x lens). Heat mediated antigen retrieval with Tris-EDTA buffer (pH 9.0).



Immunohistochemical analysis of paraffin-embedded human skeletal muscle slide using 22291-1-AP (SAR1A Antibody) at dilution of 1:50.



Immunofluorescent analysis of (-20°C Ethanol) fixed HepG2 cells using SAR1A antibody (22291-1-AP) at dilution of 1:400 and CoraLite®488-Conjugated AffiniPure Goat Anti-Rabbit IgG(H+L), CL594-Phalloidin (red).



Immunofluorescent analysis of (-20°C Ethanol) fixed A431 cells using SAR1A antibody (22291-1-AP) at dilution of 1:200 and CoraLite®488-Conjugated AffiniPure Goat Anti-Rabbit IgG(H+L) (SA00013-2), CL594-phalloidin (red).