

For Research Use Only

SAR1B Polyclonal antibody

Catalog Number: 22292-1-AP **5 Publications**



Basic Information

Catalog Number: 22292-1-AP	GenBank Accession Number: NM_016103	Purification Method: Antigen affinity purification
Size: 150ul, Concentration: 550 µg/ml by Nanodrop and 300 µg/ml by Bradford method using BSA as the standard;	GeneID (NCBI): 51128	Recommended Dilutions: WB 1:500-1:2000 IHC 1:20-1:200
Source: Rabbit	Full Name: SAR1 homolog B (S. cerevisiae)	
Isotype: IgG	Calculated MW: 22 kDa	
	Observed MW: 25-27 kDa	

Applications

Tested Applications:
IHC, WB, ELISA

Cited Applications:
IF, IP, WB

Species Specificity:
human, mouse, rat

Cited Species:
human, mouse, rat

Note-IHC: suggested antigen retrieval with TE buffer pH 9.0; (*) Alternatively, antigen retrieval may be performed with citrate buffer pH 6.0

Positive Controls:

WB: mouse liver tissue, mouse brain tissue, mouse skeletal muscle tissue, mouse small intestine tissue

IHC: human liver tissue, human skeletal muscle tissue, human small intestine tissue

Background Information

SAR1B, also named as SARA2, SARB and GTBPB, belongs to the small GTPase superfamily and SAR1 family. It is involved in transport from the endoplasmic reticulum to the Golgi apparatus. SAR1B is activated by the guanine nucleotide exchange factor PREB. It is involved in the selection of the protein cargo and the assembly of the COPII coat complex. The antibody is specific to SAR1B.

Notable Publications

Author	Pubmed ID	Journal	Application
Mengyue You	36252341	Redox Biol	WB
Jie Chen	34290409	Nature	WB, IP
Inamul Kabir	26828064	J Biol Chem	WB

Storage

Storage:

Store at -20°C. Stable for one year after shipment.

Storage Buffer:

PBS with 0.02% sodium azide and 50% glycerol pH 7.3.

Aliquoting is unnecessary for -20°C storage

***** 20ul sizes contain 0.1% BSA**

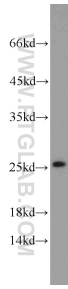
For technical support and original validation data for this product please contact:

T: 1 (888) 4PTGLAB (1-888-478-4522) (toll free in USA), or 1(312) 455-8498 (outside USA)

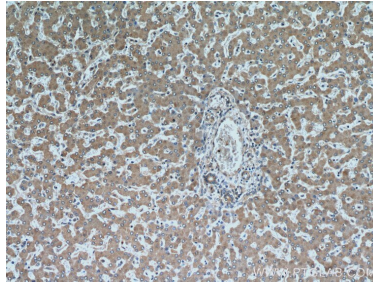
E: proteintech@ptglab.com
W: ptglab.com

This product is exclusively available under Proteintech Group brand and is not available to purchase from any other manufacturer.

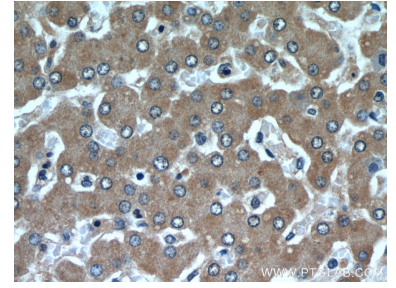
Selected Validation Data



mouse liver tissue were subjected to SDS PAGE followed by western blot with 22292-1-AP (SAR1B antibody) at dilution of 1:1000 incubated at room temperature for 1.5 hours.



Immunohistochemical analysis of paraffin-embedded human liver using 22292-1-AP (SAR1B antibody) at dilution of 1:50 (under 10x lens).



Immunohistochemical analysis of paraffin-embedded human liver using 22292-1-AP (SAR1B antibody) at dilution of 1:50 (under 40x lens).