

For Research Use Only

# ATG2A Polyclonal antibody

Catalog Number: 23226-1-AP

Featured Product

11 Publications



## Basic Information

<b>Catalog Number:</b> 23226-1-AP	<b>GenBank Accession Number:</b> BC110650	<b>Purification Method:</b> Antigen Affinity purified
<b>Size:</b> 150ul , Concentration: 600 µg/ml by Nanodrop;	<b>GeneID (NCBI):</b> 23130	<b>Recommended Dilutions:</b> WB 1:1000-1:8000 IHC 1:20-1:200
<b>Source:</b> Rabbit	<b>Full Name:</b> ATG2 autophagy related 2 homolog A (S. cerevisiae)	
<b>Isotype:</b> IgG	<b>Calculated MW:</b> 1938 aa, 213 kDa	
<b>Immunogen Catalog Number:</b> AG19709	<b>Observed MW:</b> 215 kDa	

## Applications

### Tested Applications:

IHC, WB, ELISA

### Cited Applications:

CoIP, IF, IHC, Peptide array, WB

### Species Specificity:

human

### Cited Species:

human

**Note-IHC: suggested antigen retrieval with TE buffer pH 9.0; (\*) Alternatively, antigen retrieval may be performed with citrate buffer pH 6.0**

### Positive Controls:

WB : K-562 cells, MCF-7 cells, Raji cells

IHC : human tonsillitis tissue, human kidney tissue

## Background Information

### Notable Publications

Author	Pubmed ID	Journal	Application
Jay Xiaojun Tan	36071159	Nature	WB
Ying Li	33124742	FASEB J	WB
Elodie Mailler	34799570	Nat Commun	IF

## Storage

### Storage:

Store at -20°C. Stable for one year after shipment.

### Storage Buffer:

PBS with 0.02% sodium azide and 50% glycerol pH 7.3.

Aliquoting is unnecessary for -20°C storage

\*\*\* 20ul sizes contain 0.1% BSA

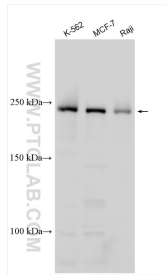
For technical support and original validation data for this product please contact:

T: 1 (888) 4PTGLAB (1-888-478-4522) (toll free in USA), or 1(312) 455-8498 (outside USA)

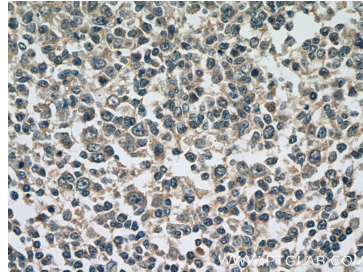
E: [proteintech@ptglab.com](mailto:proteintech@ptglab.com)  
W: [ptglab.com](http://ptglab.com)

This product is exclusively available under Proteintech Group brand and is not available to purchase from any other manufacturer.

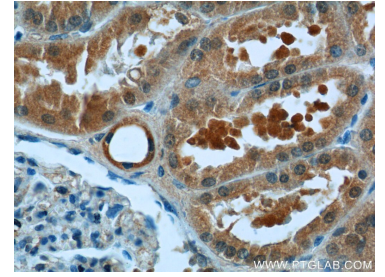
## Selected Validation Data



Various lysates were subjected to SDS PAGE followed by western blot with 23226-1-AP (ATG2A antibody) at dilution of 1:4000 incubated at room temperature for 1.5 hours.



Immunohistochemical analysis of paraffin-embedded human tonsillitis tissue slide using 23226-1-AP (ATG2A Antibody) at dilution of 1:50 (under 40x lens).



Immunohistochemical analysis of paraffin-embedded human kidney tissue slide using 23226-1-AP (ATG2A Antibody) at dilution of 1:50 (under 40x lens).