

For Research Use Only

# CLIP1 Polyclonal antibody

Catalog Number: 23839-1-AP **4 Publications**



## Basic Information

<b>Catalog Number:</b> 23839-1-AP	<b>GenBank Accession Number:</b> BC126305	<b>Purification Method:</b> Antigen Affinity purified
<b>Size:</b> 150ul, Concentration: 1300 µg/ml by Nanodrop and 513 µg/ml by Bradford method using BSA as the standard;	<b>GeneID (NCBI):</b> 6249	<b>Recommended Dilutions:</b> WB 1:1000-1:4000 IP 0.5-4.0 ug for IP and 1:1000-1:4000 for WB
<b>Source:</b> Rabbit	<b>Full Name:</b> CAP-GLY domain containing linker protein 1	<b>IF 1:20-1:200</b>
<b>Isotype:</b> IgG	<b>Calculated MW:</b> 1438 aa, 162 kDa	
<b>Immunogen Catalog Number:</b> AG20811	<b>Observed MW:</b> 160-170 kDa, 135 kDa	

## Applications

<b>Tested Applications:</b> IF, IP, WB, ELISA	<b>Positive Controls:</b>
<b>Cited Applications:</b> IF, WB	<b>WB:</b> HeLa cells, HEK-293 cells, MCF-7 cells, mouse kidney tissue, rat kidney tissue, U-937 cells
<b>Species Specificity:</b> human, mouse, rat	<b>IP:</b> HeLa cells,
<b>Cited Species:</b> human, mouse	<b>IF:</b> HeLa cells,

## Background Information

### Notable Publications

Author	Pubmed ID	Journal	Application
Yunfeng Hu	36209218	Cell Death Dis	WB
Tianyu Wu	36395215	Science	IF
Jingjing Zhang	35547804	Front Cell Dev Biol	WB

## Storage

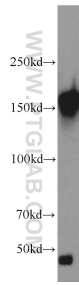
**Storage:**  
Store at -20°C. Stable for one year after shipment.  
**Storage Buffer:**  
PBS with 0.02% sodium azide and 50% glycerol pH 7.3.  
Aliquoting is unnecessary for -20°C storage

\*\*\* 20ul sizes contain 0.1% BSA

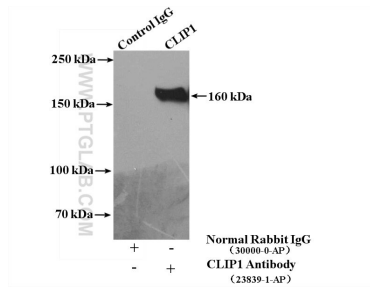
For technical support and original validation data for this product please contact:  
T: 1 (888) 4PTGLAB (1-888-478-4522) (toll free in USA), or 1(312) 455-8498 (outside USA)  
E: proteintech@ptglab.com  
W: ptglab.com

This product is exclusively available under Proteintech Group brand and is not available to purchase from any other manufacturer.

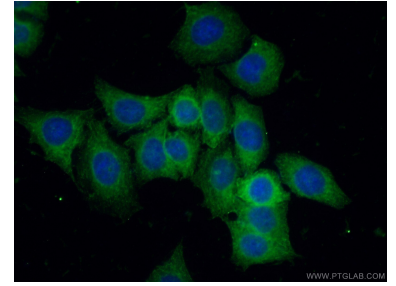
## Selected Validation Data



HeLa cells were subjected to SDS PAGE followed by western blot with 23839-1-AP (CLIP1 antibody) at dilution of 1:2000 incubated at room temperature for 1.5 hours.



IP Result of anti-CLIP1 (IP:23839-1-AP, 4ug; Detection:23839-1-AP 1:2000) with HeLa cells lysate 2400ug.



Immunofluorescent analysis of (-20°C Ethanol) fixed HeLa cells using 23839-1-AP (CLIP1 antibody) at dilution of 1:100 and Alexa Fluor 488-conjugated AffiniPure Goat Anti-Rabbit IgG(H+L).