

For Research Use Only

# C6orf182 Polyclonal antibody

Catalog Number: 24957-1-AP **2 Publications**



## Basic Information

<b>Catalog Number:</b> 24957-1-AP	<b>GenBank Accession Number:</b> BC064365	<b>Purification Method:</b> Antigen affinity purification
<b>Size:</b> 150ul , Concentration: 650 µg/ml by Nanodrop and 307 µg/ml by Bradford method using BSA as the standard;	<b>GeneID (NCBI):</b> 285753	<b>Recommended Dilutions:</b> WB 1:500-1:1000 IF 1:50-1:500
<b>Source:</b> Rabbit	<b>Full Name:</b> chromosome 6 open reading frame 182	
<b>Isotype:</b> IgG	<b>Calculated MW:</b> 460 aa, 54 kDa	
<b>Immunogen Catalog Number:</b> AG21054	<b>Observed MW:</b> 55-65 kDa	

## Applications

<b>Tested Applications:</b> IF, WB, ELISA	<b>Positive Controls:</b> WB : A549 cells, mouse kidney tissue
<b>Cited Applications:</b> IF	<b>IF :</b> HeLa cells,
<b>Species Specificity:</b> human, mouse, monkey	
<b>Cited Species:</b> human	

## Background Information

C6orf182 also named as Centrosomal protein of 57 kDa related protein is a 460 amino-acid protein, which belongs to translokain family. C6orf182 as centrosomal protein may be required for microtubule attachment to centrosomes and localizes in the cytoplasm. The function of C6orf182 need to be further studied.

## Notable Publications

Author	Pubmed ID	Journal	Application
Tianyu Wu	36395215	Science	IF
Kei K Ito	33492359	J Cell Biol	IF

## Storage

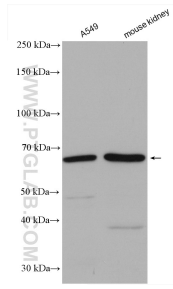
**Storage:**  
Store at -20°C. Stable for one year after shipment.  
**Storage Buffer:**  
PBS with 0.02% sodium azide and 50% glycerol pH 7.3.  
Aliquoting is unnecessary for -20°C storage

\*\*\* 20ul sizes contain 0.1% BSA

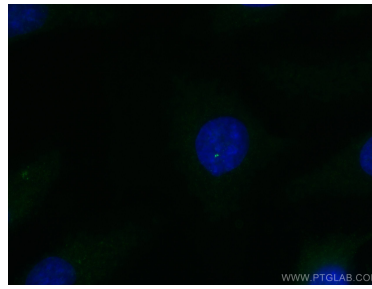
For technical support and original validation data for this product please contact:  
T: 1 (888) 4PTGLAB (1-888-478-4522) (toll free in USA), or 1(312) 455-8498 (outside USA)  
E: proteintech@ptglab.com  
W: ptglab.com

This product is exclusively available under Proteintech Group brand and is not available to purchase from any other manufacturer.

## Selected Validation Data



Various lysates were subjected to SDS PAGE followed by western blot with 24957-1-AP (C6orf182 antibody) at dilution of 1:600 incubated at room temperature for 1.5 hours.



Immunofluorescent analysis of (-20°C Methanol) fixed HeLa cells using C6orf182 antibody (24957-1-AP) at dilution of 1:200 and CoraLite® 488-Conjugated AffiniPure Goat Anti-Rabbit IgG(H+L).