

For Research Use Only

# RELB Polyclonal antibody

Catalog Number: 25027-1-AP **8 Publications**



## Basic Information

|   |   |  |
|---|---|--|
| <b>Catalog Number:</b><br>25027-1-AP                          | <b>GenBank Accession Number:</b><br>BC028013                              | <b>Purification Method:</b><br>Antigen affinity purification |
| <b>Size:</b><br>150ul , Concentration: 700 µg/ml by Nanodrop; | <b>GeneID (NCBI):</b><br>5971   | <b>Recommended Dilutions:</b><br>WB 1:1000-1:6000            |
| <b>Source:</b><br>Rabbit                                      | <b>UNIPROT ID:</b><br>Q01201  | IP 0.5-4.0 ug for 1.0-3.0 mg of total protein lysate         |
| <b>Isotype:</b><br>IgG  | <b>Full Name:</b><br>v-rel reticuloendotheliosis viral oncogene homolog B | IHC 1:50-1:500   |
| <b>Immunogen Catalog Number:</b><br>AG13824                   | <b>Calculated MW:</b><br>62 kDa   | IF 1:200-1:800   |
|   | <b>Observed MW:</b><br>62-65 kDa  |  |

## Applications

**Tested Applications:**  
WB, IP, IF, FC, IHC, ELISA

**Cited Applications:**  
WB, IF, FC, IHC

**Species Specificity:**  
human, mouse

**Cited Species:**  
human, mouse

**Note-IHC: suggested antigen retrieval with TE buffer pH 9.0; (\*) Alternatively, antigen retrieval may be performed with citrate buffer pH 6.0**

**Positive Controls:**

**WB:** Raji cells, Ramos cells, mouse thymus tissue

**IP:** Raji cells,

**IHC:** human colon cancer tissue, human lymphoma tissue

**IF:** HeLa cells,

## Background Information

RELB, also named as Transcription factor RelB, is a 579 amino acid protein, which contains one RHD domain. RELB localizes in the nucleus and cytoplasm. RELB is a pleiotropic transcription factor which is present in almost all cell types and is involved in many biological processes such as inflammation, immunity, differentiation, cell growth, tumorigenesis and apoptosis.

## Notable Publications

| Author      | Pubmed ID | Journal                 | Application |
|-------------|-----------|-------------------------|-------------|
| Xinhua Xiao | 28906487  | Cell Death Dis          | WB          |
| Li Chen     | 32492708  | J Clin Endocrinol Metab | WB          |
| Lu Jiang    | 26192917  | Nat Genet               | WB, IHC     |

## Storage

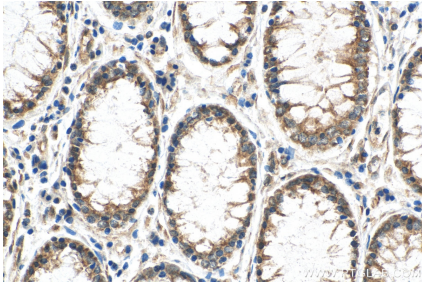
**Storage:**  
Store at -20°C. Stable for one year after shipment.  
**Storage Buffer:**  
PBS with 0.02% sodium azide and 50% glycerol pH 7.3.  
Aliquoting is unnecessary for -20°C storage

\*\*\* 20ul sizes contain 0.1% BSA

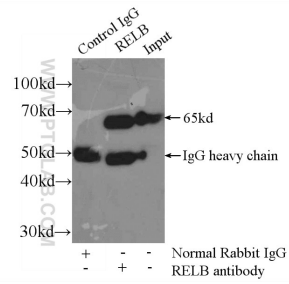
For technical support and original validation data for this product please contact:  
T: 1 (888) 4PTGLAB (1-888-478-4522) (toll free in USA), or 1(312) 455-8498 (outside USA)  
E: proteintech@ptglab.com  
W: ptglab.com

This product is exclusively available under Proteintech Group brand and is not available to purchase from any other manufacturer.

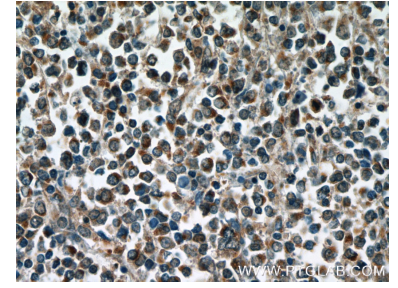
## Selected Validation Data



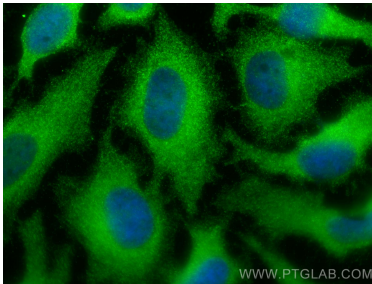
Immunohistochemical analysis of paraffin-embedded human colon cancer tissue slide using 25027-1-AP (RELB antibody) at dilution of 1:200 (under 40x lens). Heat mediated antigen retrieval with Tris-EDTA buffer (pH 9.0).



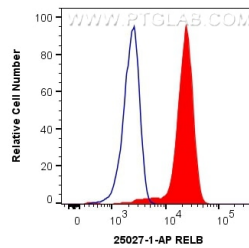
IP result of anti-RELB (IP:25027-1-AP, 3ug; Detection:25027-1-AP 1:300) with Raji cells lysate 2500ug.



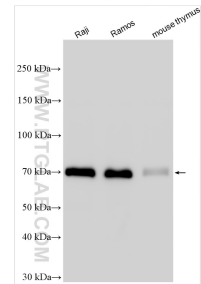
Immunohistochemical analysis of paraffin-embedded human lymphoma tissue slide using 25027-1-AP (RELB Antibody) at dilution of 1:50 (under 40x lens).



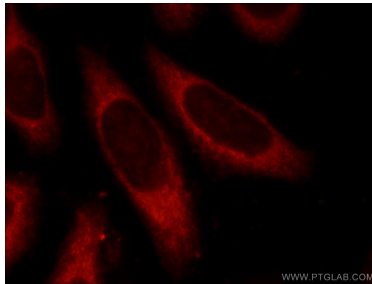
Immunofluorescent analysis of (-20°C Methanol) fixed HeLa cells using RELB antibody (25027-1-AP) at dilution of 1:400 and CoraLite®488-Conjugated AffiniPure Goat Anti-Rabbit IgG(H+L).



$1 \times 10^6$  Jurkat cells were intracellularly stained with 0.5 ug Anti-Human RELB (25027-1-AP) and CoraLite®488-Conjugated AffiniPure Goat Anti-Rabbit IgG(H+L) at dilution 1:1000 (red), or 0.5 ug Rabbit IgG control Rabbit PolyAb (30000-O-AP, Clone: ) (blue). Cells were fixed with 4% PFA and permeabilized with Flow Cytometry Perm Buffer (PF00011-C).



Various lysates were subjected to SDS PAGE followed by western blot with 25027-1-AP (RELB antibody) at dilution of 1:3000 incubated at room temperature for 1.5 hours.



Immunofluorescent analysis of HeLa cells using 25027-1-AP (RELB antibody) at dilution of 1:25 and Rhodamine-Goat anti-Rabbit IgG.