

For Research Use Only

ASPM Polyclonal antibody

Catalog Number: 26223-1-AP

Featured Product

14 Publications



Basic Information

Catalog Number: 26223-1-AP	GenBank Accession Number: BC034607	Purification Method: Antigen affinity purification
Size: 150ul, Concentration: 650 µg/ml by Nanodrop and 400 µg/ml by Bradford method using BSA as the standard;	GeneID (NCBI): 259266	Recommended Dilutions: WB 1:500-1:1000 IHC 1:50-1:500 IF 1:150-1:600
Source: Rabbit	Full Name: asp (abnormal spindle) homolog, microcephaly associated (Drosophila)	
Isotype: IgG	Calculated MW: 410 kDa or 218 kDa	
Immunogen Catalog Number: AG24166	Observed MW: 218 kDa	

Applications

Tested Applications:
IF, IHC, WB, ELISA

Cited Applications:
ColP, IF, IHC, IP, WB

Species Specificity:
human

Cited Species:
human, mouse

Note-IHC: suggested antigen retrieval with TE buffer pH 9.0; (*) Alternatively, antigen retrieval may be performed with citrate buffer pH 6.0

Positive Controls:

WB: HEK-293T cells, K-562 cells

IHC: human prostate cancer tissue, human gliomas tissue, human ovary tumor tissue

IF: HeLa cells,

Background Information

Notable Publications

Author	Pubmed ID	Journal	Application
Chuanxin Zhang	36242049	J Ovarian Res	IF
Tianyu Wu	36395215	Science	IF
Lu Wang	34741399	Kaohsiung J Med Sci	WB, ColP

Storage

Storage:

Store at -20°C. Stable for one year after shipment.

Storage Buffer:

PBS with 0.02% sodium azide and 50% glycerol pH 7.3.

Aliquoting is unnecessary for -20°C storage

*** 20ul sizes contain 0.1% BSA

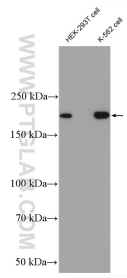
For technical support and original validation data for this product please contact:

T: 1 (888) 4PTGLAB (1-888-478-4522) (toll free in USA), or 1(312) 455-8498 (outside USA)

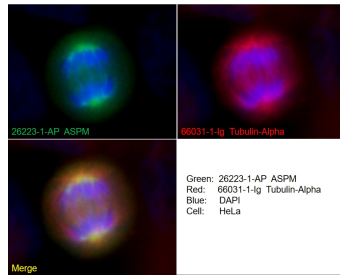
E: proteintech@ptglab.com
W: ptglab.com

This product is exclusively available under Proteintech Group brand and is not available to purchase from any other manufacturer.

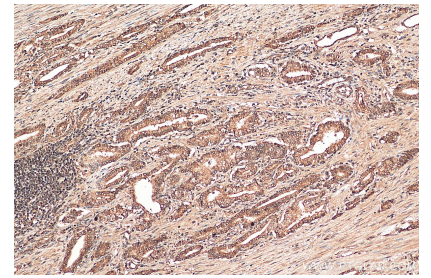
Selected Validation Data



Various lysates were subjected to SDS PAGE followed by western blot with 26223-1-AP (ASPM antibody) at dilution of 1:600 incubated at room temperature for 1.5 hours.



Immunofluorescent analysis of (4% PFA) fixed HeLa cells using 26223-1-AP (ASPM antibody), at dilution of 1:300 and CoraLite®488-Conjugated AffiniPure Goat Anti-Rabbit IgG(H+L). Cells were co-stained with alpha tubulin (66031-1-Ig, red).



Immunohistochemical analysis of paraffin-embedded human prostate cancer tissue slide using 26223-1-AP (ASPM antibody) at dilution of 1:200 (under 10x lens). Heat mediated antigen retrieval with Tris-EDTA buffer (pH 9.0).