

For Research Use Only

BCRP,ABCG2 Polyclonal antibody

Catalog Number:27286-1-AP

Featured Product

42 Publications



Basic Information

Catalog Number: 27286-1-AP	GenBank Accession Number: BC021281	Purification Method: Antigen affinity purification
Size: 150ul , Concentration: 600 µg/ml by Nanodrop;	GeneID (NCBI): 9429	Recommended Dilutions: WB 1:500-1:2000 IHC 1:50-1:500
Source: Rabbit	UNIPROT ID: Q9UNQ0	
Isotype: IgG	Full Name: ATP-binding cassette, sub-family G (WHITE), member 2	
Immunogen Catalog Number: AG25911	Calculated MW: 70 kDa	
	Observed MW: 68-72 kDa	

Applications

Tested Applications:

IHC, WB, ELISA

Cited Applications:

WB,IHC,IF

Species Specificity:

human, mouse

Cited Species:

human, rat, mouse, canine

Note-IHC: suggested antigen retrieval with TE buffer pH 9.0; (*) Alternatively, antigen retrieval may be performed with citrate buffer pH 6.0

Positive Controls:

WB : HepG2 cells, HEK-293 cells, MCF-7 cells, SGC-7901 cells, mouse brain tissue

IHC : human liver cancer tissue, human breast cancer tissue

Background Information

BCRP (breast cancer resistance protein) confers a broad spectrum of drug resistance and the expression of BCRP is enhanced in several cancer cell models. It has ATPase activity and belongs to a family of multiple drug resistant proteins. Data also indicated that BCRP might be an early marker for some stem cells.

Notable Publications

Author	Pubmed ID	Journal	Application
Chaoqun Liu	34551797	J Exp Clin Cancer Res	WB
Xingkang Jiang	31672604	Cell Signal	WB
Guoshu Lin	34699754	Eur J Pharmacol	WB

Storage

Storage:

Store at -20°C. Stable for one year after shipment.

Storage Buffer:

PBS with 0.02% sodium azide and 50% glycerol pH 7.3.

Aliquoting is unnecessary for -20°C storage

*** 20ul sizes contain 0.1% BSA

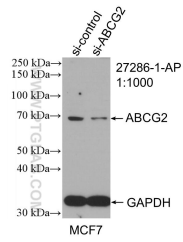
For technical support and original validation data for this product please contact:

T: 1 (888) 4PTGLAB (1-888-478-4522) (toll free in USA), or 1(312) 455-8498 (outside USA)

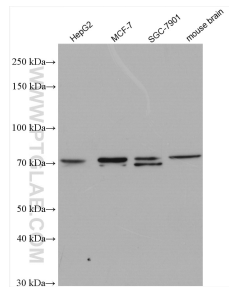
E: proteintech@ptglab.com
W: ptglab.com

This product is exclusively available under Proteintech Group brand and is not available to purchase from any other manufacturer.

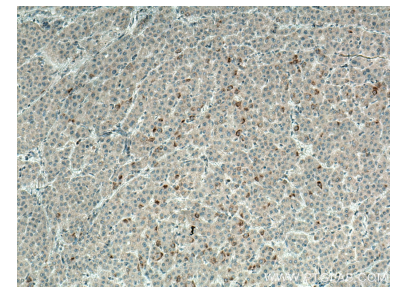
Selected Validation Data



WB result of BCRP,ABCG2 antibody (27286-1-AP; 1:1000; incubated at room temperature for 1.5 hours) with sh-Control and sh-BCRP,ABCG2 transfected MCF-7 cells.



Various lysates were subjected to SDS PAGE followed by western blot with 27286-1-AP (BCRP,ABCG2 antibody) at dilution of 1:1000 incubated at room temperature for 1.5 hours.



Immunohistochemical analysis of paraffin-embedded human liver cancer tissue slide using 27286-1-AP (BCRP,ABCG2 antibody) at dilution of 1:200 (under 10x lens. Heat mediated antigen retrieval with Tris-EDTA buffer (pH 9.0).