

For Research Use Only

CEP170 Polyclonal antibody

Catalog Number: 27325-1-AP

Featured Product

5 Publications



Basic Information

Catalog Number: 27325-1-AP	GenBank Accession Number: BC140794	Purification Method: Antigen affinity purification
Size: 150ul, Concentration: 300 µg/ml by Nanodrop and 267 µg/ml by Bradford method using BSA as the standard;	GeneID (NCBI): 9859	Recommended Dilutions: WB 1:500-1:1000 IF 1:50-1:500
Source: Rabbit	Full Name: centrosomal protein 170kDa	
Isotype: IgG	Calculated MW: 1486 aa, 165 kDa	
Immunogen Catalog Number: AG26311	Observed MW: 170-190 kDa	

Applications

Tested Applications: IF, WB, ELISA	Positive Controls: WB : MCF-7 cells, HeLa cells
Cited Applications: IF, WB	IF : HeLa cells,
Species Specificity: human	
Cited Species: human, mouse	

Background Information

Notable Publications

Author	Pubmed ID	Journal	Application
Tianyu Wu	36395215	Science	IF
Shuyun Ma	33404607	J Cell Biol	IF
Dandan Ma	35119360	Elife	WB,IF

Storage

Storage:
Store at -20°C. Stable for one year after shipment.
Storage Buffer:
PBS with 0.02% sodium azide and 50% glycerol pH 7.3.
Aliquoting is unnecessary for -20°C storage

*** 20ul sizes contain 0.1% BSA

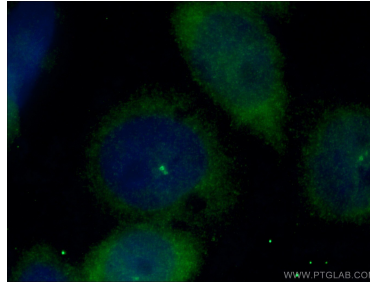
For technical support and original validation data for this product please contact:
T: 1 (888) 4PTGLAB (1-888-478-4522) (toll free in USA), or 1(312) 455-8498 (outside USA)
E: proteintech@ptglab.com
W: ptglab.com

This product is exclusively available under Proteintech Group brand and is not available to purchase from any other manufacturer.

Selected Validation Data



MCF-7 cells were subjected to SDS PAGE followed by western blot with 27325-1-AP (CEP170 antibody) at dilution of 1:600 incubated at room temperature for 1.5 hours.



Immunofluorescent analysis of (-20°C Ethanol) fixed HeLa cells using 27325-1-AP (CEP170 antibody) at dilution of 1:50 and Alexa Fluor 488-Conjugated AffiniPure Goat Anti-Rabbit IgG(H+L).