

For Research Use Only

SARS-CoV-2 Envelope Protein Polyclonal antibody



Catalog Number: 28904-1-AP

1 Publications

Basic Information

| | | |
|--|---|--|
| Catalog Number: 28904-1-AP | GenBank Accession Number: NC_045512 | Purification Method: Antigen affinity purification |
| Size: 150ul , Concentration: 575 µg/ml by Nanodrop; | GeneID (NCBI): 43740570 | |
| Source: Rabbit | Full Name: COVID-19 E Protein | |
| Isotype: IgG | | |
| Immunogen Catalog Number: AG30690 | | |

Applications

Tested Applications:
ELISA

Cited Applications:
IF

Species Specificity:
virus

Cited Species:
human

Background Information

Envelope protein of coronaviruses is a structural protein existing in both monomeric and homopentameric form. It is a minor component of the virus membrane though it is deemed to be important for many stages including virus infection, replication, dissemination and immune response stimulation. Sequence comparison has shown that this protein is identical to the counterparts of specific Bat and Pangolin coronavirus isolates, even though the Sars-CoV-2 sequence seems to possess specific modifications and characteristics with respect to other Sars CoVs (PMID:32596311). The SARS-CoV-2 envelope protein provide a strategy to assess cross-protection against COVID-19 (PMID: 32446902).

Notable Publications

| Author | Pubmed ID | Journal | Application |
|------------|-----------|---------------------|-------------|
| Jiahang Ju | 36082238 | Front Cell Neurosci | IF |

Storage

Storage:
Store at -20°C. Stable for one year after shipment.

Storage Buffer:
PBS with 0.02% sodium azide and 50% glycerol pH 7.3.

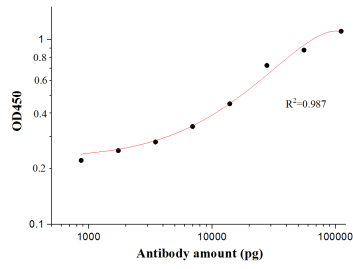
Aliquoting is unnecessary for -20°C storage

*** 20ul sizes contain 0.1% BSA

For technical support and original validation data for this product please contact:
T: 1 (888) 4PTGLAB (1-888-478-4522) (toll free in USA), or 1(312) 455-8498 (outside USA)
E: proteintech@ptglab.com
W: ptglab.com

This product is exclusively available under Proteintech Group brand and is not available to purchase from any other manufacturer.

Selected Validation Data



SARS-CoV-2 Envelope protein Antibody (28904-1-AP) tested by ELISA. SARS-CoV-2 Envelope protein was coated onto microtiter plates at 0.15 µg/well and then incubated with a dilution series of SARS-CoV-2 Envelope protein Antibody (28904-1-AP). Bound antibodies were detected with HRP conjugated anti-Rabbit IgG followed by incubation with HRP Substrate and then measuring the resulting absorbance at 450 nm.