

For Research Use Only

PAX2 Polyclonal antibody

Catalog Number: 29307-1-AP **2 Publications**



Basic Information

Catalog Number: 29307-1-AP	GenBank Accession Number: BC148710	Purification Method: Antigen affinity purification
Size: 150ul , Concentration: 600 µg/ml by Nanodrop;	GeneID (NCBI): 5076	Recommended Dilutions: WB 1:500-1:2000 IHC 1:500-1:2000
Source: Rabbit	Full Name: paired box 2	
Isotype: IgG	Calculated MW: 431 aa, 46 kDa	
Immunogen Catalog Number: AG30717	Observed MW: 45 kDa	

Applications

Tested Applications: IHC, WB, ELISA	Positive Controls:
Cited Applications: FC, IHC	WB : mouse cerebellum tissue, rat cerebellum tissue
Species Specificity: Human, mouse, rat	IHC : mouse kidney tissue, human renal cell carcinoma tissue
Cited Species: human	
Note-IHC: suggested antigen retrieval with TE buffer pH 9.0; (*) Alternatively, antigen retrieval may be performed with citrate buffer pH 6.0	

Background Information

PAX2 is a transcription factor, primarily expressed during embryonic development. It has a critical role in the development of the urogenital tract, the eyes, and the CNS. It plays a key role during renal development and to act as an oncogene favoring renal tumor growth. PAX2 was suggested as a sensitive and highly specific marker for renal cell carcinoma (RCC).

Notable Publications

Author	Pubmed ID	Journal	Application
Xiangmin Lv	34888112	Sci Bull (Beijing)	IHC
Bella Rossbach	35456007	Cells	FC

Storage

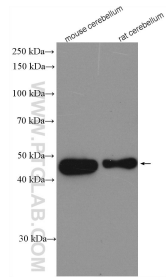
Storage:
Store at -20°C. Stable for one year after shipment.
Storage Buffer:
PBS with 0.02% sodium azide and 50% glycerol pH 7.3.
Aliquoting is unnecessary for -20°C storage

*** 20ul sizes contain 0.1% BSA

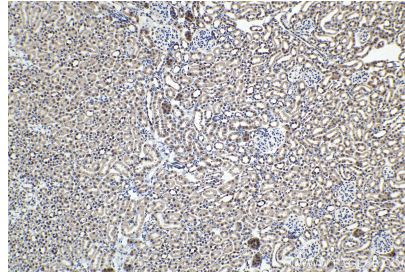
For technical support and original validation data for this product please contact:
T: 1 (888) 4PTGLAB (1-888-478-4522) (toll free in USA), or 1(312) 455-8498 (outside USA) E: proteintech@ptglab.com W: ptglab.com

This product is exclusively available under Proteintech Group brand and is not available to purchase from any other manufacturer.

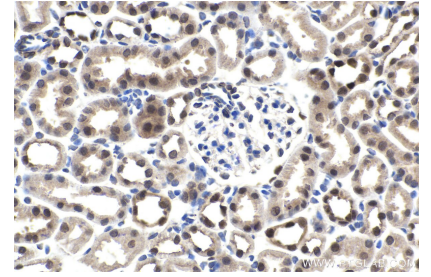
Selected Validation Data



Various lysates were subjected to SDS PAGE followed by western blot with 29307-1-AP (PAX2 antibody) at dilution of 1:1000 incubated at room temperature for 1.5 hours.



Immunohistochemical analysis of paraffin-embedded mouse kidney tissue slide using 29307-1-AP (PAX2 antibody) at dilution of 1:1000 (under 10x lens). Heat mediated antigen retrieval with Tris-EDTA buffer (pH 9.0).



Immunohistochemical analysis of paraffin-embedded mouse kidney tissue slide using 29307-1-AP (PAX2 antibody) at dilution of 1:1000 (under 40x lens). Heat mediated antigen retrieval with Tris-EDTA buffer (pH 9.0).