

For Research Use Only

Rabbit IgG control Polyclonal antibody



Catalog Number: 30000-0-AP **268 Publications**

Basic Information

Catalog Number:
30000-0-AP

Size:
1mg, Concentration: 1 mg/ml by Nanodrop and 1 mg/ml by Bradford method using BSA as the standard;

Source:
Rabbit

Isotype:
IgG

Purification Method:
Protein A affinity purification

Recommended Dilutions:
WB 1:2000-1:20000

Applications

Tested Applications:
WB, IP, FC, ELISA

Cited Applications:
WB, IP, FC, RIP, IHC, ColP, ChIP, Cell treatment

Species Specificity:

Cited Species:
human, rat, sheep, mouse, bovine

Positive Controls:
WB : Protein, Control

Background Information

This product is Normal rabbit IgG (without immunized) which purified with Protein A. Normal Rabbit IgG is an isotype control antibody, which is used to estimate the non-specific binding of target primary antibodies due to Fc receptor binding or other protein-protein interactions. An isotype control antibody should have the same immunoglobulin type and be used at the same concentration as the test antibody.

Notable Publications

Author	Pubmed ID	Journal	Application
Jinguo Xia	36225644	Am J Cancer Res	RIP
Yan Pan	36174379	Biomed Pharmacother	WB
Duraisamy Kempuraj	28952015	J Neuroimmune Pharmacol	

Storage

Storage:
Store at -20°C. Stable for one year after shipment.

Storage Buffer:
PBS with 0.02% sodium azide and 50% glycerol pH 7.3.

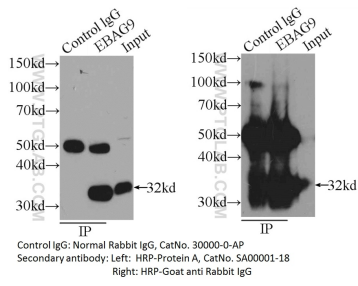
Aliquoting is unnecessary for -20°C storage

*** 20ul sizes contain 0.1% BSA

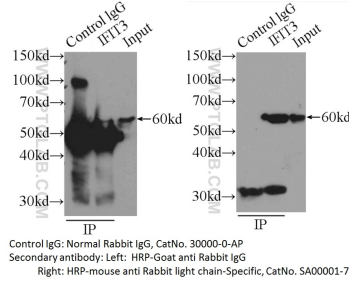
For technical support and original validation data for this product please contact:
T: 1 (888) 4PTGLAB (1-888-478-4522) (toll free in USA), or 1(312) 455-8498 (outside USA) E: proteintech@ptglab.com W: ptglab.com

This product is exclusively available under Proteintech Group brand and is not available to purchase from any other manufacturer.

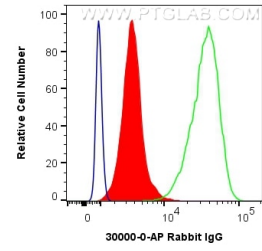
Selected Validation Data



IP sample detected with different secondary antibodies. Normal Rabbit IgG (30000-0-AP) as control.



IP sample detected with different secondary antibodies. Normal Rabbit IgG (30000-0-AP) as control.



1X10⁶ Jurkat cells were intracellularly stained with 0.2 ug Anti-Rabbit IgG control (30000-0-AP) and CoraLite@488-Conjugated AffiniPure Goat Anti-Rabbit IgG(H+L) at dilution 1:1000 (red), or 0.2 ug Control Antibody. Cells were fixed with 4% PFA and permeabilized with Flow Cytometry Perm Buffer (PF00011-C).