

For Research Use Only

BCL2 Monoclonal antibody

Catalog Number: 60178-1-Ig

Featured Product

264 Publications



Basic Information

Catalog Number: 60178-1-Ig	GenBank Accession Number: BC027258	Purification Method: Protein A purification
Size: 150ul, Concentration: 2157 µg/ml by 596 Nanodrop and 1000 µg/ml by Bradford method using BSA as the standard;	GeneID (NCBI): 596	CloneNo.: 4H8C6
Source: Mouse	UNIPROT ID: P10415	Recommended Dilutions: IP 0.5-4.0 ug for 1.0-3.0 mg of total protein lysate IHC 1:6400-1:25600 IF 1:200-1:800
Isotype: IgG2b	Full Name: B-cell CLL/lymphoma 2	
Immunogen Catalog Number: AG3508	Calculated MW: 26 kDa	
	Observed MW: 26 kDa	

Applications

Tested Applications:
IP, IF, FC, IHC, ELISA

Cited Applications:
IP, IF, IHC, ICC, CoIP

Species Specificity:
human, pig

Cited Species:
human, monkey, pig

Note-IHC: suggested antigen retrieval with TE buffer pH 9.0; (*) Alternatively, antigen retrieval may be performed with citrate buffer pH 6.0

Positive Controls:

IP: U-937 cells,

IHC: human appendicitis tissue, human tonsillitis tissue, human lymphoma tissue, Jurkat cells

IF: MCF-7 cells, human tonsillitis tissue, human appendicitis tissue

Background Information

BCL2 belongs to the Bcl-2 family. It suppresses apoptosis in a variety of cell systems including factor-dependent lymphohematopoietic and neural cells. BCL2 regulates cell death by controlling the mitochondrial membrane permeability. It appears to function in a feedback loop system with caspases. BCL2 inhibits caspase activity either by preventing the release of cytochrome c from the mitochondria and/or by binding to the apoptosis-activating factor (APAF-1).

Notable Publications

Author	Pubmed ID	Journal	Application
Ji Xing	36230734	Cancers (Basel)	IF
Fei Yu	36175965	Chin Med	WB
Jinliang Liu	34630847	Oxid Med Cell Longev	WB

Storage

Storage:

Store at -20°C. Stable for one year after shipment.

Storage Buffer:

PBS with 0.02% sodium azide and 50% glycerol pH 7.3.

Aliquoting is unnecessary for -20°C storage

*** 20ul sizes contain 0.1% BSA

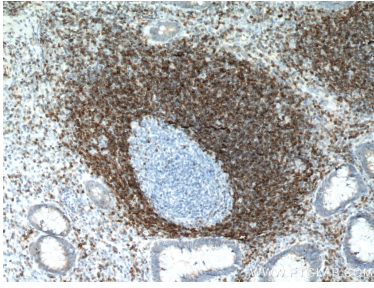
For technical support and original validation data for this product please contact:

T: 1 (888) 4PTGLAB (1-888-478-4522) (toll free in USA), or 1(312) 455-8498 (outside USA)

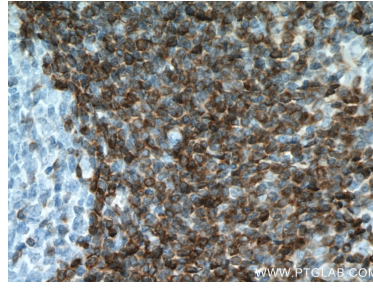
E: proteintech@ptglab.com
W: ptglab.com

This product is exclusively available under Proteintech Group brand and is not available to purchase from any other manufacturer.

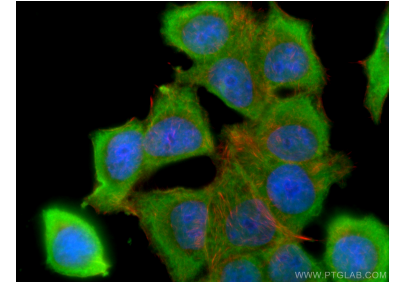
Selected Validation Data



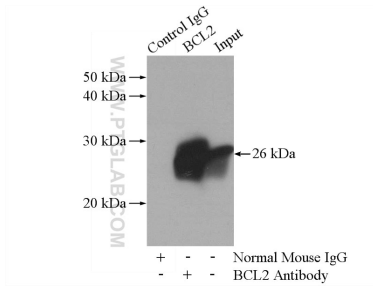
Immunohistochemical analysis of paraffin-embedded human appendicitis tissue slide using 60178-1-Ig (BCL2 antibody) at dilution of 1:12800 (under 10x lens. Heat mediated antigen retrieval with Tris-EDTA buffer (pH 9.0).



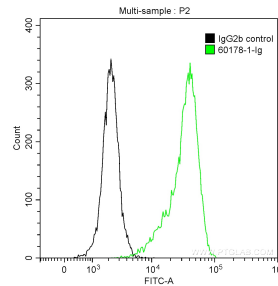
Immunohistochemical analysis of paraffin-embedded human appendicitis tissue slide using 60178-1-Ig (BCL2 antibody) at dilution of 1:12800 (under 40x lens. Heat mediated antigen retrieval with Tris-EDTA buffer (pH 9.0).



Immunofluorescent analysis of (-20°C Ethanol) fixed MCF-7 cells using BCL2 antibody (60178-1-Ig, Clone: 4H8C6) at dilution of 1:400 and CoraLite®488-Conjugated AffiniPure Goat Anti-Mouse Ig(H+L).



IP result of anti-BCL2 (IP:60178-1-Ig, 5ug; Detection:60178-1-Ig 1:1000) with U-937 cells lysate 4000ug.



1X10⁶ human peripheral blood lymphocytes were stained with 0.2 ug Anti-Human BCL2 (60178-1-Ig, Clone:4H8C6) and CoraLite®488-Conjugated AffiniPure Goat Anti-Mouse IgG(H+L) at dilution 1:1000 (green), or 0.2 ug isotype control and CoraLite®488-Conjugated AffiniPure Goat Anti-Mouse IgG(H+L) at dilution 1:1000 (black). Cells were fixed with 4% PFA and permeabilized with 0.1% Triton X-100.