

For Research Use Only

TMEM106B Monoclonal antibody

Catalog Number: 60333-1-Ig

Featured Product

6 Publications



Basic Information

Catalog Number:

60333-1-Ig

Size:

150ul, Concentration: 1500 µg/ml by Nanodrop;

Source:

Mouse

Isotype:

IgG1

Immunogen Catalog Number:

AG21448

GenBank Accession Number:

BC033901

GeneID (NCBI):

54664

UNIPROT ID:

Q9NUM4

Full Name:

transmembrane protein 106B

Calculated MW:

31 kDa

Observed MW:

~40 kDa

Purification Method:

Protein G purification

CloneNo.:

5D1F8

Recommended Dilutions:

WB 1:5000-1:50000

IP 0.5-4.0 µg for 1.0-3.0 mg of total protein lysate

Applications

Tested Applications:

WB, IP, ELISA

Cited Applications:

WB, IP, IF, IHC

Species Specificity:

human

Cited Species:

human

Positive Controls:

WB : U2OS cells, HeLa cells, K-562 cells, LNCaP cells, A549 cells, Jurkat cells

IP : HeLa cells,

Background Information

TMEM106B is a genetic risk factor for frontotemporal lobar degeneration with TDP-43 inclusions (FTLD-TDP). Amyotrophic lateral sclerosis (ALS), like FTLD-TDP, is characterized by pathological TDP-43 inclusions. TMEM106B expression in the brain may be linked to mechanisms of disease in FTLD-TDP and risk alleles confer genetic susceptibility by increasing gene expression.

Notable Publications

Author	Pubmed ID	Journal	Application
Andrew Chang	35247328	Cell	IHC
Jolien Perneel	36527486	Acta Neuropathol	IHC
Claudia S Bauer	36619668	Front Cell Neurosci	WB

Storage

Storage:

Store at -20°C. Stable for one year after shipment.

Storage Buffer:

PBS with 0.02% sodium azide and 50% glycerol pH 7.3.

Aliquoting is unnecessary for -20°C storage

*** 20ul sizes contain 0.1% BSA

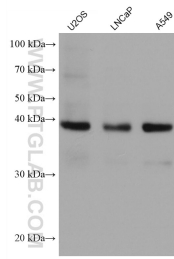
For technical support and original validation data for this product please contact:

T: 1 (888) 4PTGLAB (1-888-478-4522) (toll free in USA), or 1(312) 455-8498 (outside USA)

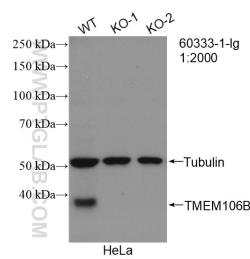
E: proteintech@ptglab.com
W: ptglab.com

This product is exclusively available under Proteintech Group brand and is not available to purchase from any other manufacturer.

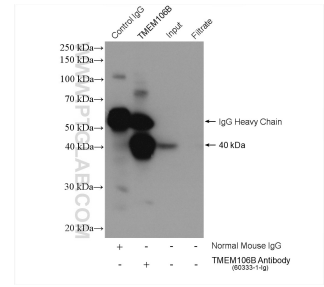
Selected Validation Data



Various lysates were subjected to SDS PAGE followed by western blot with 60333-1-Ig (TMEM106B antibody) at dilution of 1:10000 incubated at room temperature for 1.5 hours.



WB result of TMEM106B antibody (60333-1-Ig; 1:2000; room temperature for 1.5 hours) with wild-type and TMEM106B knockout HeLa cells.



IP result of anti-TMEM106B (IP:60333-1-Ig, 5ug; Detection:60333-1-Ig 1:500) with HeLa cells lysate 1720 ug.