

For Research Use Only

HSP60 Monoclonal antibody

Catalog Number: 66041-1-Ig **38 Publications**



Basic Information

Catalog Number: 66041-1-Ig	GenBank Accession Number: BC003030	Purification Method: Protein A purification
Size: 150ul, Concentration: 1000 µg/ml by Nanodrop and 490 µg/ml by Bradford method using BSA as the standard;	GeneID (NCBI): 3329	CloneNo.: 2F10E7
Source: Mouse	UNIPROT ID: P10809	Recommended Dilutions: WB 1:5000-1:50000 IP 0.5-4.0 µg for 1.0-3.0 mg of total protein lysate IHC 1:50-1:2000 IF 1:50-1:500
Isotype: IgG1	Full Name: heat shock 60kDa protein 1 (chaperonin)	
Immunogen Catalog Number: AG7848	Calculated MW: 61 kDa	
	Observed MW: 60 kDa	

Applications

Tested Applications:
WB, IP, IF, FC, IHC, ELISA

Cited Applications:
WB, IP, IF, ELISA

Species Specificity:
human, mouse, rat

Cited Species:
human, chicken, yeast, rat, mouse, pig

Note-IHC: suggested antigen retrieval with TE buffer pH 9.0; (*) Alternatively, antigen retrieval may be performed with citrate buffer pH 6.0

Positive Controls:

WB: HeLa cells, HEK-293 cells, Jurkat cells, HSC-T6 cells, NIH/3T3 cells, pig brain, rabbit brain, chicken brain

IP: mouse liver tissue,

IHC: human ovary tumor tissue, human spleen tissue, human tonsillitis tissue, human skin cancer tissue, human testis tissue

IF: HeLa cells, Neuro-2a cells

Background Information

HSPD1, also known as HSP60, belongs to the chaperonin family and acts as a chaperone to enhance cell survival under physiological stresses. Hsp60 has been shown to be connected with many aspects of cell functions such as protein folding and assembling of polypeptide chains in mitochondria. Recently it has been reported that HSP60 is associated with apoptosis or inhibition of cancer cell growth. (21822415)

Notable Publications

Author	Pubmed ID	Journal	Application
Boyden Myers	36142714	Int J Mol Sci	IF
Jianli Tang	36106732	mBio	WB,IF,IP
Na Li	34557266	Oxid Med Cell Longev	IP

Storage

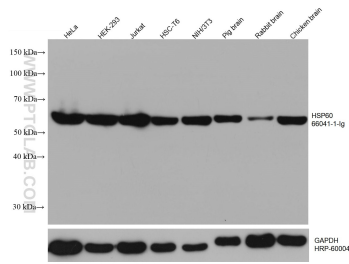
Storage:
Store at -20°C. Stable for one year after shipment.
Storage Buffer:
PBS with 0.02% sodium azide and 50% glycerol pH 7.3.
Aliquoting is unnecessary for -20°C storage

*** 20ul sizes contain 0.1% BSA

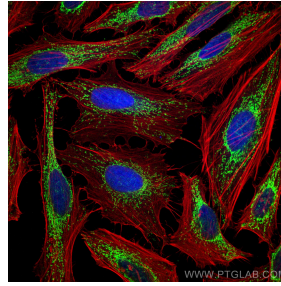
For technical support and original validation data for this product please contact:
T: 1 (888) 4PTGLAB (1-888-478-4522) (toll free in USA), or 1(312) 455-8498 (outside USA)
E: proteintech@ptglab.com
W: ptglab.com

This product is exclusively available under Proteintech Group brand and is not available to purchase from any other manufacturer.

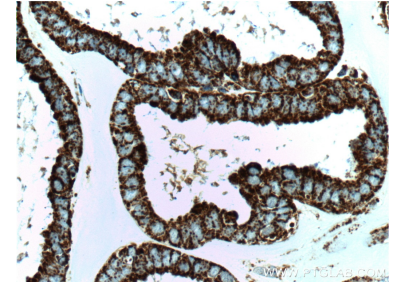
Selected Validation Data



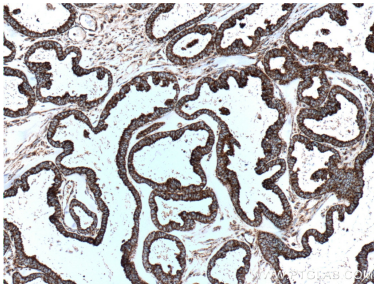
Various lysates were subjected to SDS PAGE followed by western blot with 66041-1-Ig (HSP60 antibody) at dilution of 1:20000 incubated at room temperature for 1.5 hours. The membrane was stripped and reblotted with HRP-conjugated GAPDH Monoclonal antibody (HRP-60004) as loading control.



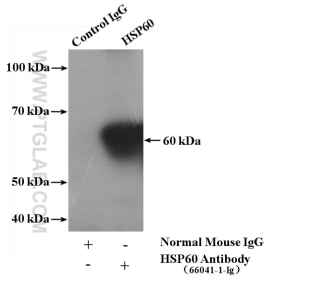
Immunofluorescent analysis of (4% PFA) fixed HeLa cells using HSP60 antibody (66041-1-Ig, Clone: 2F10E7) at dilution of 1:100 and CoraLite®488-Conjugated AffiniPure Goat Anti-Mouse IgG(H+L), (CL594-Phalloidin, red).



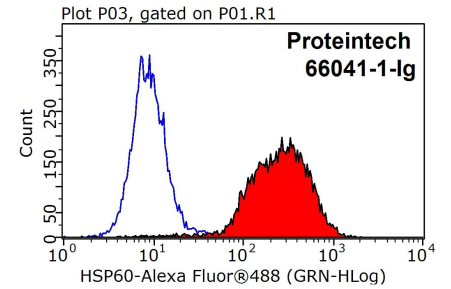
Immunohistochemical analysis of paraffin-embedded human ovary tumor tissue slide using 66041-1-Ig (HSP60 antibody at dilution of 1:500 (under 40x lens). Heat mediated antigen retrieval with Tris-EDTA buffer (pH 9.0).



Immunohistochemical analysis of paraffin-embedded human ovary tumor tissue slide using 66041-1-Ig (HSP60 antibody at dilution of 1:500 (under 10x lens). Heat mediated antigen retrieval with Tris-EDTA buffer (pH 9.0).



IP result of anti-HSP60 (IP:66041-1-Ig, 5ug; Detection:66041-1-Ig 1:2000) with mouse liver tissue lysate 4000ug.



1X10⁶ HeLa cells were stained with 0.2ug HSP60 antibody (66041-1-Ig, red) and control antibody (blue). Fixed with 90% MeOH blocked with 3% BSA (30 min). Alexa Fluor 488-conjugated AffiniPure Goat Anti-Mouse IgG(H+L) with dilution 1:1000.